

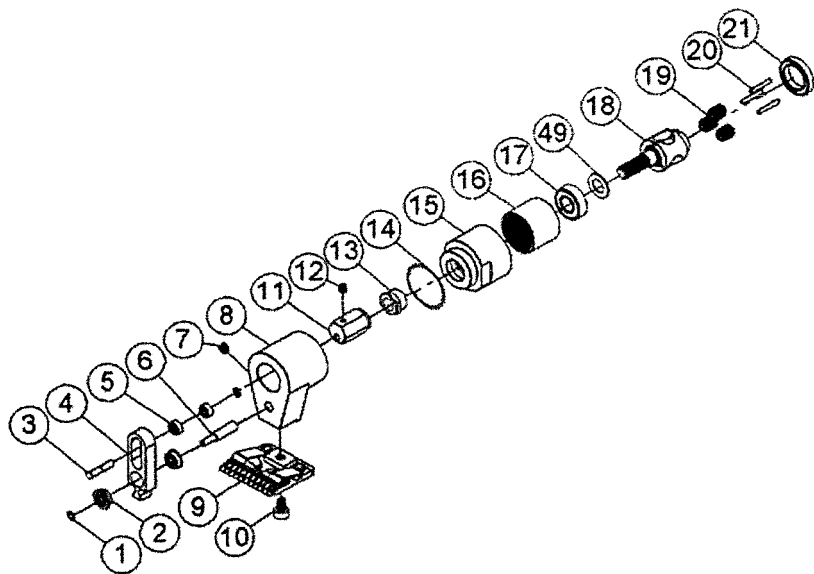
# **CARPET CARVING TOOL**



## **PARTS LIST**

## **INSTRUCTION MANUAL**

# CARPET CARVING TOOL



2

2

2

2

### 3. Oiling :

- (1) Oiling is available without closing the air piping.
- (2) Turn off the part 37 counterclockwise.
- (3) Use ISO-VG32 or similar lubricants.
- (4) After adding oil the maximum level, tighten the part 37 to have oil drop.
- (5) Do not remove the oil cup directly for oiling.

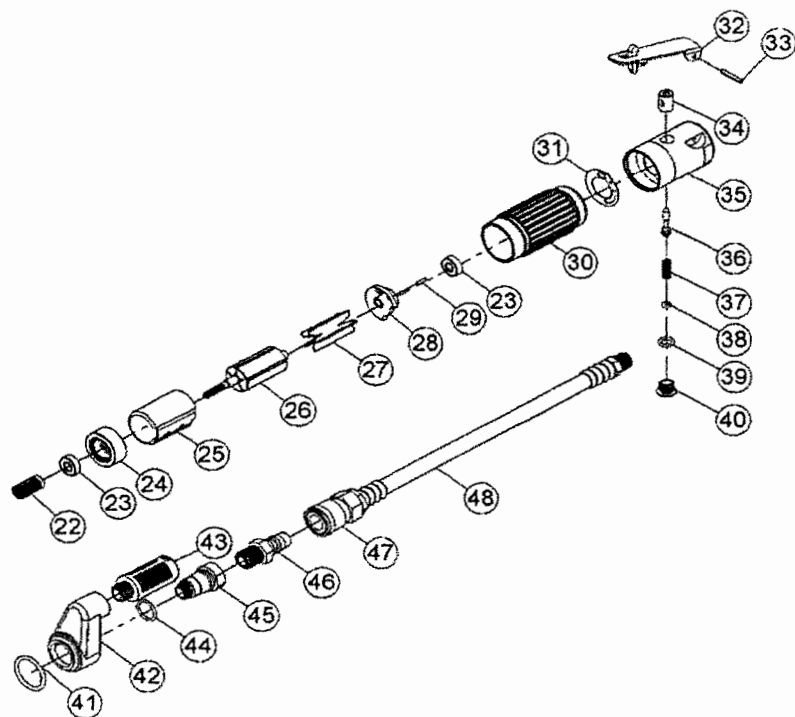
### 4. Maintenance :

- (1) Shut off the air supply and discharge the air into the atmosphere.
- (2) Turn off the part 2 counterclockwise.
- (3) Clean the transparent P.C. cup with a clean and dry cloth, do not use any chemical that would be hazardous to the P.C. material.
- (4) When assembling the kit again, please be sure that the seal and o-ring are in correct position.

### Notice :

Take alcohol, gas, paint and other hazardous materials away from the unit.

NO.	PART NO	DESCRIPTION
1	S-04	Retaining Rings
2	RF-1140	Ball Bearing
3	80222-1	Pin
4	80223	Fork Drive
5	BB-06842Z	Ball Bearing (684)
6	80224-1	Support Shaft
7	SS-0506	Screw (M5*6L)
8	80221-1	Head
9	4017	Blade
10	B2-0508	Screw (M5*8L)
11	80220-1	Shaft-Crank
12	SS-0406A	Screw (M4*6L)
13	80201	Shaft Cover
14	80215-1	Washer
15	80202-2	Nut
16	80205-2	Internal Gear
17	BB-R62RS	Ball Bearing (R62Rs)
18	80206-2	Driving Gear
19	80207-2	Planet Gear
20	NR-02518	Pin (D2.5*18L)
21	BB-68032Z	Ball Bearing (6803)
49	PW-9.6-17-0.8	Washer



NO.	PARTS NO.	DESCRIPTION
22	80208-2	Gear Wheel
23	BB-R42Z	Ball Bearing (R4)
24	80210-1	Front End Plate
25	80211-1	Cylinder
26	80212	Rotor

- (2) Turn off the part 2 counterclockwise and then turn off the part 4 counterclockwise to remove the part 5 filter.
- (3) The filter that makes the air flow outward is available for repeated use.
- (4) Clean the transparent P.C. cup with a clean and dry cloth, do not use any chemical that would be hazardous to the P.C. material.

## LUBRICATOR

### 1. Installation instruction :

- (1) Site - as closer as possible to the unit will be protected.
- (2) Direct installation of filter – pressure regulate before lubricate.
- (3) Add the lubricant into the oil cup.

### 2. Oil drop regulation :

- (1) Regulation of the needle valve : Turn it clockwise for less oil drop. Turn it counterclockwise for more oil drop.
- (2) Air flow regulation : After setting the needle valve. More airflow, more oil drop. Less airflow, less oil drops.

- (5) Site – as closer as possible to the unit will be protected.
- (6) Place – free of direct sunshine, hot area and hazardous chemicals.
- (7) The water drainage shall be deployed beneath the water discharge for outlet of water into proper area.

## 2. Regulation :

### (1) Regulation of pressure

- (a) Raise off the part 22 and turn it clockwise to have the pressure up and counterclockwise to have the pressure down.
- (b) Regulate the pressure to the desired level and press down the part 22 to lock it up.

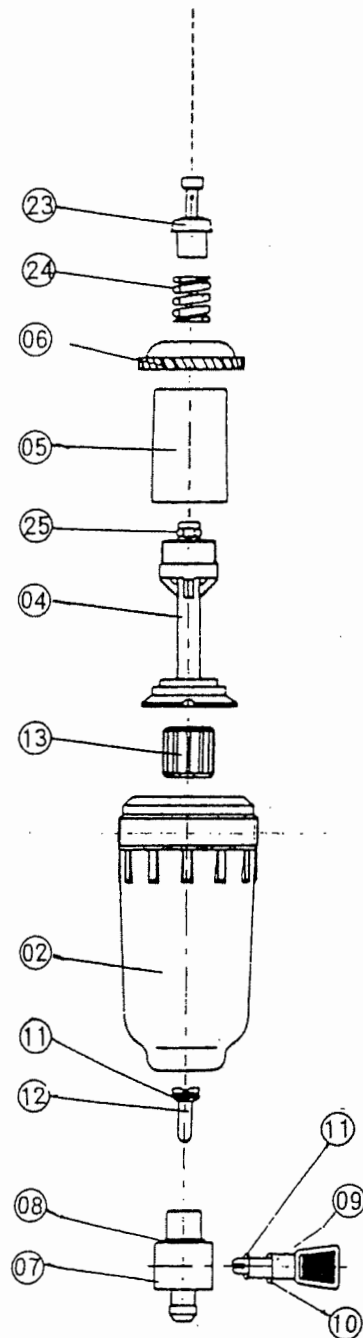
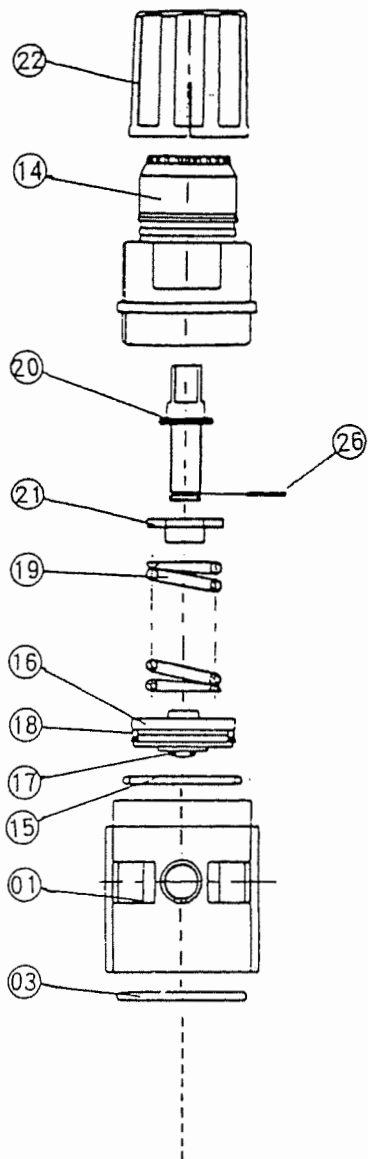
### (2) Drainage

- (a) If no pneumatic pressure, water will discharge.
- (b) If pneumatic pressure, turn the part 9 to “▼” upward, water will discharge.
- (c) When the water level exceeds the maximum limit, please drain off the water to keep optimal dehumidification.

## 3. Maintenance :

- (1) Shut off the air supply and discharge the air into the atmosphere.

NO.	PARTS NO.	DESCRIPTION
27	80213	Rotor Blade
28	80209	Rear End Plate
29	NR-20090	Pin (D2*9L)
30	80214-2	Housing
31	80217A	Washer
32	307023	Lever Assembly
33	SP-30200	Lever Pin (D3*200L)
34	B141010	Valve Bushing
35	80217-2	Valve Case
36	80235	Throttle Valve
37	AR-38002	Spring
38	ORP-0030	O-Ring (P3)
39	ORP-0080	O-Ring (P8)
40	AR-14A09A	Throttle Valve Plug
41	ORP-AS119	O-Ring
42	80230	Exhaust Control Spacer
43	80233	Silencer
44	ORP-AS015	Ring
45	80234-1	Air Inlet
46	PM-20	Fast Joint
47	SH-1-4A	Air Hose
48	80227	Air Hose Assy



## 6. Adjustment of blade.

- (1) Loosen screws.
- (2) Adjust the upper blade with the lower blade. The top of the blades has to be in the same line.
- (3) Tighten screws.

## 7. Check following points before changing the blades :

- (1) Compressor is not running
- (2) Air pressure adjusted at 6 bars
- (3) Adjustment of blade

If necessary bent the spring on the upper blade

# FILET REFULATOR

## 1. Installation instruction :

- (1) The assembly of all calibration shall meet the maximum flow requirement.
- (2) Maximum pressure of 9.9kgf/cm<sup>3</sup>
- (3) Direction – air flow in the triangle “▷” on the primary unit.
- (4) Position – water discharge the triangle “▼” downward.

## Instructions for Carpet Carving Tool

1. Install a maintenance unit between compressor and the Carpet Carving Tool
2. Please take note of separate operating manual for air motor.  
Connect the Carpet Carving Tool to delivered air filter and compressor.  
Adjust the air pressure with maximum 6 bars. Lower pressure reduces the cutting speed and higher pressure than 6 bars will destroy the motor.
3. Grease the ball bearings and blade lever arm regularly.
4. Grease blades regularly for longer lifetime of blades.

Take care : No grease in your carpet.

5. Sharpening of the blades only on the relief parts. The blades have to be sharpened only on the relief parts of the upper and lower blade. When the relief parts are disappointed, the blade is worn out.

<i>NO.</i>	<i>PARTS NO.</i>	<i>DESCRIPTION</i>
1	W2001	BODY
2	F2002	BOWL
3	F2005	O RING
4	F2006	BOWL BAFFLE
5	F2007	FILTER ELEMENT
6	F2008	INTERCEPTOR
7	F8010	BODY
8	F8011	O RING
9	F8012	VALVE
10	F8013	O RING
11	F8014	O RING
12	F8016	PISTON
13	F8017	NUT
14	R2102	DOME
15	R8003	O RING
16	R8004	PISTON
17	R8005	O RING
18	R8006	V RING
19	R2107	SPRING
20	R2108	ADJUSTING SCREW
21	R2109	NUT
22	R2110	KNOB
23	R2111	VALVE
24	R2012	SPRING
25	R2013	O RING
26	R2116	E RING

