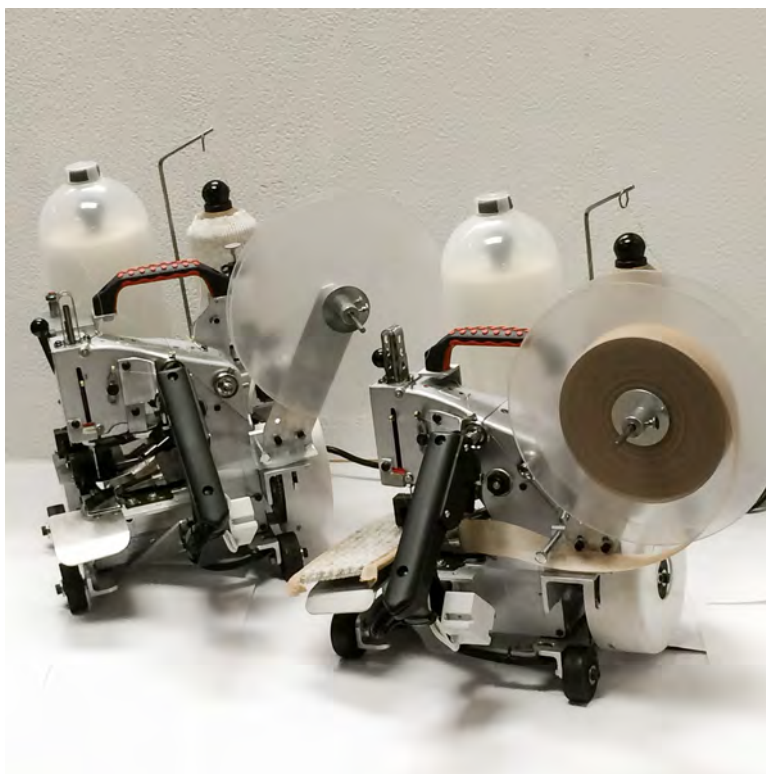


ADJUSTING INSTRUCTIONS AND ILLUSTRATED PARTS LIST

Introducing our latest creation...

All New Model PBB Portable Bobbinless Binder!

PBB 2 x 2 & 4 x 4 MODELS



BOND PRODUCTS INC

4511 WAYNE AVE PHILADELPHIA PA 19144

TOLL FREE PHONE 888-800-BOND (2663)

TOLL FREE FAX 800-582-9643

LOCAL PHONE 215-842-0200

LOCAL FAX 215-844-7175

EMAIL: sales@bondproducts.com

WEB: www.bondproducts.com

Rev. August 2018



WELCOME...

.....to Carpet Binding 101. The bond team has been serving the carpet trade for 61 years. This is your one-stop source for everything you need to finish and bind carpet. In addition, we have many specialty products that are custom designed to meet the needs of carpet mechanics, workrooms and Do-It-Yourself customers.

Our experienced staff will assist you in selecting the right products for your job: Cutting and binding machines, carpet binding tapes in a wide variety of styles and colors, and serging tape for use with our binding machines. Also, carving machines for sculpted area rugs, sundry tools and products necessary for completion of your tasks.

Look to Bond for all your carpet-related needs!

Carpet Binding 101



Introducing
BOND'S PORTABLE BOBBINLESS CARPET BINDER
PBB-4x4 and PBB-2x2

This instruction manual has been prepared and written to guide you in the usage of your PORTABLE BOBBINLESS BINDER. In order to obtain maximum efficiency from this machine, we urge you to read this entire manual thoroughly before using the machine for the first time.

Although this machine has been carefully assembled, inspected and tested, should it ever need factory service, we recommend it be shipped in its original carton. If the original carton is no longer available, you may use a sturdy carton with ample room to allow packing material (i.e. foam, carpeting, etc.) to surround the entire machine, (especially the bottom) to prevent it from shifting inside while in transit.

Send or address all inquiries or returns to:

Service Manager
BOND PRODUCTS INC
4511 Wayne Avenue
Philadelphia PA 19144- 3639 USA
Call Toll Free (888-800-2663) or
Fax Toll Free (800-582-9643)

When ordering replacement parts or supplies identify the model and serial number of the machine. We recommend shipping the machine for repairs via UPS, FedEx, or Parcel Post. Be sure to insure its value in case of damage during transit.

BOND MANAGEMENT

Limited 90 Day Warranty

Bond Products, Inc. makes every effort to assure that its products meet high quality and durability standards and warrants, to the original purchaser, that this product is free from defects in materials and workmanship for a period of 90 days from date of purchase. This warranty does not apply to damage due, directly or indirectly, to misuse, abuse, negligence, repairs or alterations outside our facilities, or lack of maintenance.

We shall in no event be liable for death or injuries to persons or property, or for incidental, contingent, special, or consequential damages arising from the use of our products. Some states do not allow the exclusion or limitation of incidental or consequential damages, so the above limitation or exclusion may not apply to you.

To take advantage of this warranty, the product or part must be returned to us with transportation charges prepaid. Proof of purchase and an explanation of the complaint must accompany the merchandise. If our inspection verifies the defect, we will either repair or replace the product at our election, or we may elect to refund the purchase price if we cannot readily and quickly provide you with a replacement. The repaired product will be returned to you via the most economical route, and you will be charged for the cost of transportation.

This warranty gives you specific legal rights. You may also have other rights which vary from state to state.

WARNING

PERSONAL INJURY MAY RESULT IF THE FOLLOWING SAFETY PRECAUTIONS ARE NOT OBSERVED.

1. BE SURE THE AREA SURROUNDING MACHINE IS FREE OF ALL HAZARDS SUCH AS FIRE, WATER, OIL, RUBBISH OR ANYTHING THAT CAN CAUSE INJURY.
2. DO NOT OPERATE MACHINE IN AN EXPLOSIVE AREA OR UNDER WET CONDITIONS. THE MACHINE IS NOT AN EXPLOSION PROOF TYPE, NOR WATER-PROOF TYPE.
3. DO NOT OPERATE MACHINE BEFORE READING INSTRUCTION MANUAL.
4. DO NOT OPERATE MACHINE ON VOLTAGES OTHER THAN SPECIFIED FOR THE MACHINE.
5. BE SURE MACHINE IS CONNECTED TO BUILDING ELECTRICAL SAFETY GROUND (EARTH).
6. BE SURE POWER (AND AIR SUPPLY) IS OFF BEFORE PERFORMING MACHINE MAINTENANCE, PARTS REPLACEMENT, ADJUSTMENTS OR CLEANING.
7. DO NOT OPERATE MACHINE WITH GUARDS AND COVERS REMOVED.
8. DO NOT TOUCH KNIFE, NEEDLE, PULLEY, BELT AND MOVING PARTS WHEN MACHINE IS IN OPERATION.
9. BE SURE MACHINE IS PLACED ON A SMOOTH (LEVEL) SURFACE WHEN PERFORMING MAINTENANCE, PARTS REPLACEMENT, ADJUSTMENTS, CLEANING OR STORAGE.
10. BE SURE THE MATERIAL TO BE SEWN OR CLOSED COMPLIES WITH THE MACHINE SPECIFICATIONS.
11. DO NOT USE SPARE PARTS OTHER THAN "BOND" GENUINE PARTS.

Identifying and Ordering Parts

Where the construction permits, each part is stamped with its part number. On all orders, please include part number, part name and model name of machine.

(SAMPLE: PBB203081 Looper)

Safety Rules

To prevent personal injury:

- All power sources to the machine must be turned off before threading, oiling, adjusting or replacing parts.
- All cover and guards must be in position before operating machine.
- Do not tamper with safety cover, guards, etc., while machine is in operation.

Cautions When Using the Machine

Safety Precautions

- 1) Always turn power off before threading, oiling, and adjusting the machine or replacing parts.
- 2) Wear safety glasses.
- 3) Make sure before starting the machine that all covers and shields are in place and closed.

Maintenance

- Please keep in mind to handle the machine carefully and to maintain the machine in good condition.
- Thread fuzz or dust must be cleaned with air or brush on throat plate, in the groove of feed dog or around looper after the day's work.
- Wipe the area easy to rust with oil cloth.
- Check the machine for loose screws and tighten them, if any, once a month.
- Good maintenance will prolong the machine life.

CONTENTS

1. SPECIFICATIONS.....	1
2. THE POINTS BEFORE OPERATION.....	1
3. THREADING.....	4
4. OILING.....	5
5. OPERATION.....	5
6. ADJUSTING.....	6
6-1 Needle and Looper.....	6
6-2 Needle Height.....	6
6-3 Gap between Looper and Needle.....	7
6-4 Feed Dog Height.....	7
6-5 Needle Guard Adjustment.....	8
PARTS LIST.....	9
NUMERICAL INDEX OF PARTS.....	21, 22
DIAGRAM OF SCREW, NUT & WASHER.....	23
PARTS ASSEMBLIES DIAGRAMS.....	24-44
Frame 1- Puller Assembly.....	24
Frame 2- Puller Wheel Assembly.....	25
Frame 3- PBB 2x2 Clutch Assembly.....	26
Frame 4- PBB 4x4 Puller Assembly.....	27
Frame 5- PBB 4x4 Clutch Assembly.....	28
Frame 6- PBB 4x4 Rear Puller Assembly.....	29
Frame 7- Puller Lifting Lever Assembly.....	30
Frame 8- PBB 4x4 Back Puller Lower Assembly.....	31
Frame 9- Caster Brackets Assembly.....	32
Frame 10- Thread Bracket Assembly.....	33
Frame 11- Handle Bracket Assembly.....	34
Frame 12- Caster Brackets Assembly.....	35
Frame 13- Belt Cover Assembly.....	36
Frame 14- Handle Assembly.....	37
Frame 15- Handle & Thread Base Support Bracket Assembly.....	38
Frame 16- Binding Bracket Assembly.....	39
Frame 17- Assorted Threads for Needle & Looper.....	40
Frame 18- Assorted Tools & Accessories.....	41
Frame 19- Cove Base Binding Guide Assembly.....	42
Frame 20- Assorted Tape Folders & Bracket Assemblies.....	43
Frame 21- Light Assembly.....	44

BOND PRODUCTS INC

4511 WAYNE AVENUE

PHILADELPHIA PA 19144-3639

TOLL FREE PHONE 888-800-BOND (2663)

TOLL FREE FAX 800-582-9643

LOCAL PHONE 215-842-0200

LOCAL FAX 215-844-7175

EMAIL: sales@bondproducts.com

WEB: www.bondproducts.com

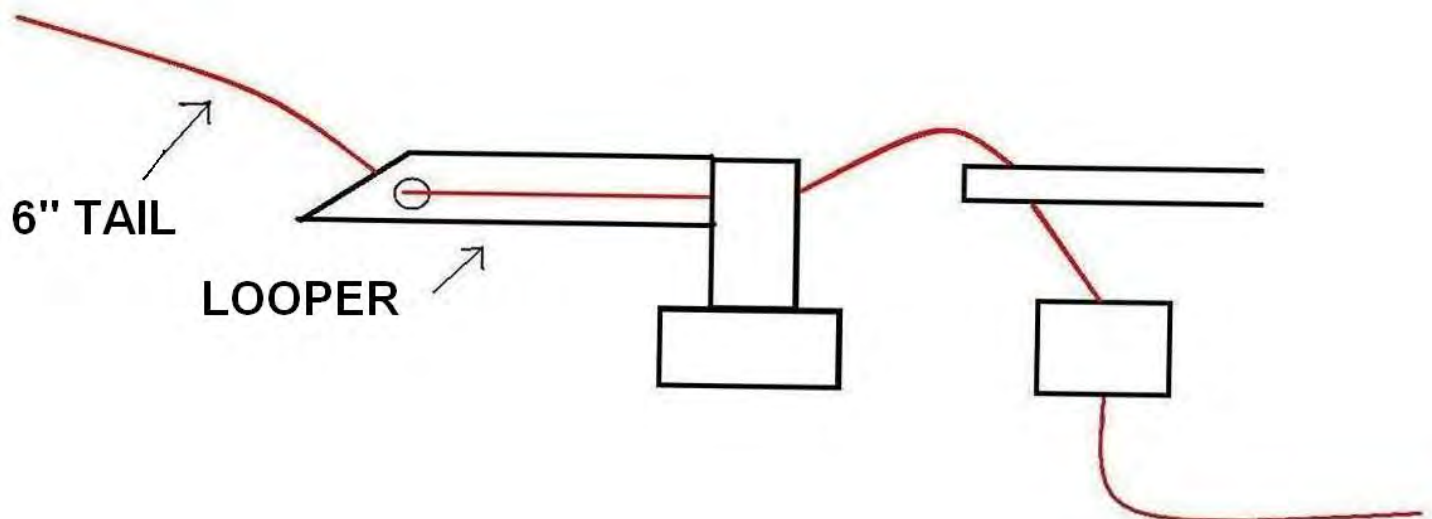
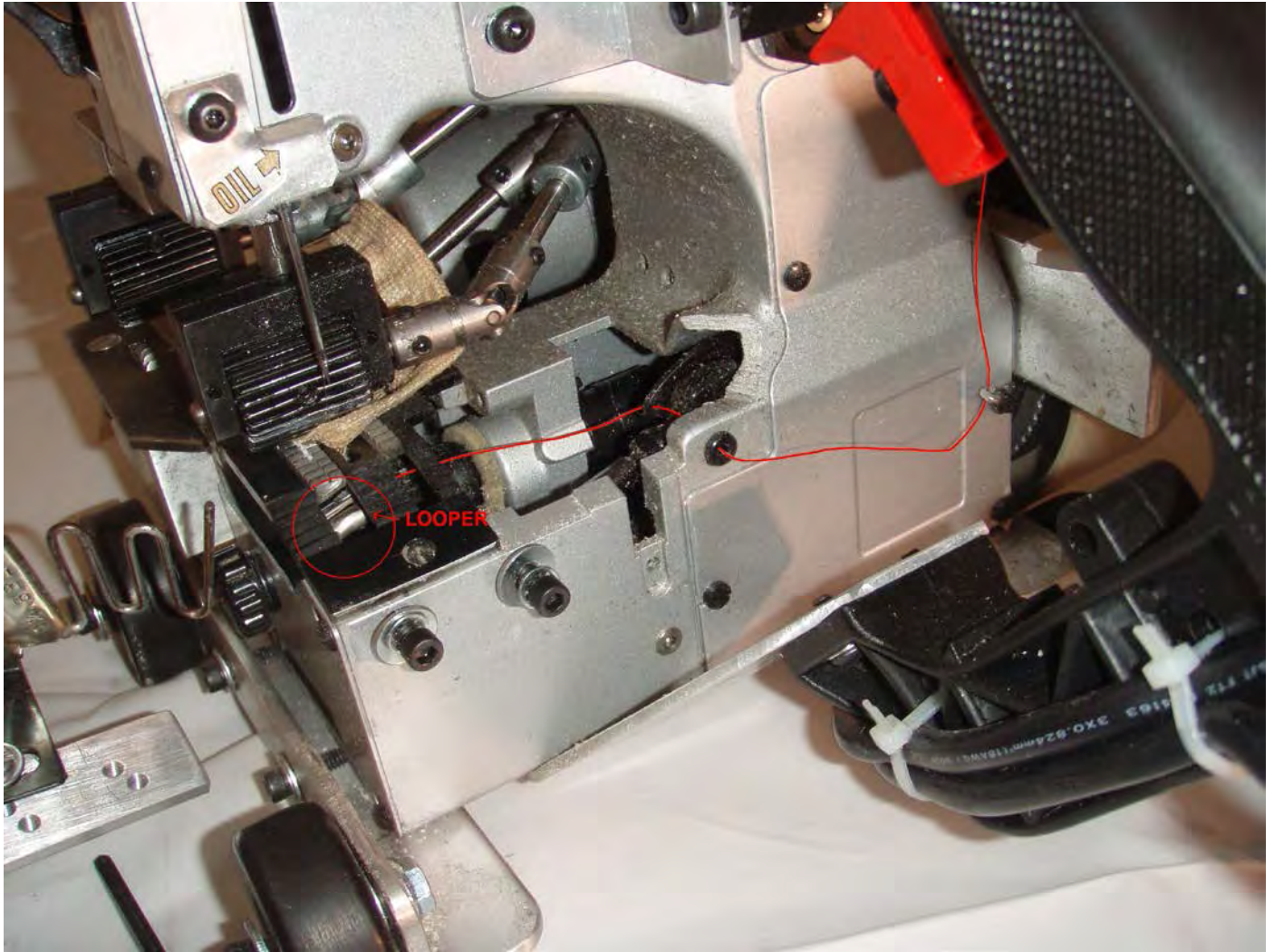
1. SPECIFICATIONS

Stitch type.....double thread chain stitch
Stitch length..... 8.5mm / 21/64 inches or
3 stitches per inch
Speed.....up to 30 feet per minute
adjustable variable speed
Needle.....UY143GS / DNX1-25/080
Threads:Needle = #75 Mono/clear H.D.
Looper = #69 Bonded Nylon; #138 Bonded Nylon
Drive motor.....110/125, 220/230/240V (AC)
12/24V (DC) 50/60Hz, Single phase

2. THE POINTS BEFORE OPERATION

- Oil the area through which thread passes, the tension disc, the thread guide, looper, etc.
(Note: An anticorrosive agent is applied to the machines at the factory, in order to prevent rusting. It is necessary to use oil to remove this agent or it may prevent the thread from passing smoothly.)
- Confirm that the machine has been threaded as per the instructions 3. in the manual.
- Confirm that the machine has been lubricated as per the instructions 4. in the manual.

3. NEEDLE & LOOPER THREADING



NEEDLE THREADING

To simplify the threading of the needle, just tie off both thread ends with a knot, continue pulling the thread through all the guides. Cut off the knot and continue threading through the needle eye. Leave a six inch plus tail beyond the needle eye, or...

1. Remove the dome from the old thread canister by twisting it counter-clockwise (Fig. 1A)
2. Turn the black knob on the top of the canister counter-clockwise.
3. Replace the empty canister with the new canister by aligning the threaded rod through the center holes of the canister.
4. Screw the black knob clockwise to the threaded rod. Tighten knob snugly.
5. Install the clear dome over the canister making sure that the thread is clear and won't get pinched as you twist the clear dome clockwise onto the canister base. (Fig. 1B)
6. Pull the thread from the top of the dome and follow the thread eyelets threading sequence: 1 through 6. (Fig. 1C)

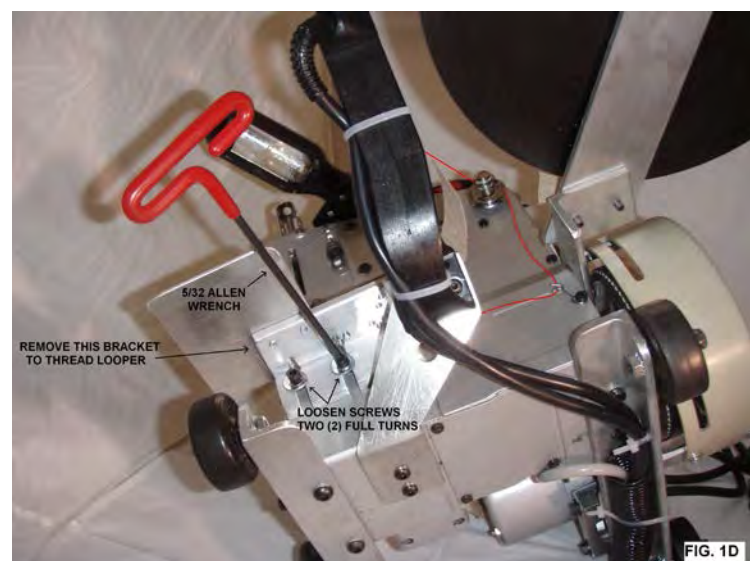


LOOPER THREADING

To simplify the threading of the looper, just tie off both thread ends with a knot, and then continue pulling the thread through the thread rod eye and the tensioner. Continue pulling the thread end through all eyelets and through both looper eyes. Leave a six inch tail past the looper, or...

1. Remove the black knob from the empty spool by twisting it counter-clockwise.
2. Replace the empty spool with the new spool. (Fig. 1B)
3. Screw the black knob clockwise to the threaded rod, tighten knob snugly.
4. Put thread end through the eye of the thread rod above the spool. (Fig. 1A)
5. Continue threading through the thread tensioner, then through the eyelet below it.
6. Remove the tape guide bracket by loosening the two allen screws with the 5/32 allen wrench two full turns only. (Fig. 1D)
7. Lift up on the folder bracket and set it aside. Put the thread through the front casting eyelet and through the take up eyelet, then through the looper eyes.
8. Leave a 6 inch tail past the looper.
9. Replace the tape folder bracket and tighten screws snugly.

You are now ready to bind.



4. OILING

Oiling of all moving parts is imperative before each operation of this machine. The oiling points are marked in red, spray lube the looper area after blowing off debris from the looper chamber. Use Bond spray lube, stock# 21325.

5. OPERATION

1. Hold the machine at the handle with your right hand.
2. Support the carpet with your left hand.
3. To start binding the carpet, align one corner of the carpet into the tape folder guide mouth, pull the trigger switch and slowly feed the carpet through the folder mouth. Let the machine move towards you without helping it pull through the carpet.
4. When you get to the other end of the carpet, continue binding on the tape until the carpet has passed the rear feed rollers/pullers. Cut off the tape ½" past the corner.
5. Continue binding the next side of the carpet.
6. Let the machine pull itself. If you pull the machine faster than its speed, the binder will mis-stitch or break the needle.
7. This machine has variable speed trigger switch. For more speed, squeeze the switch more; for slower speed, squeeze less. Turn and adjust speed control knob located at the trigger switch until the desired speed is found.

6. ADJUSTMENT

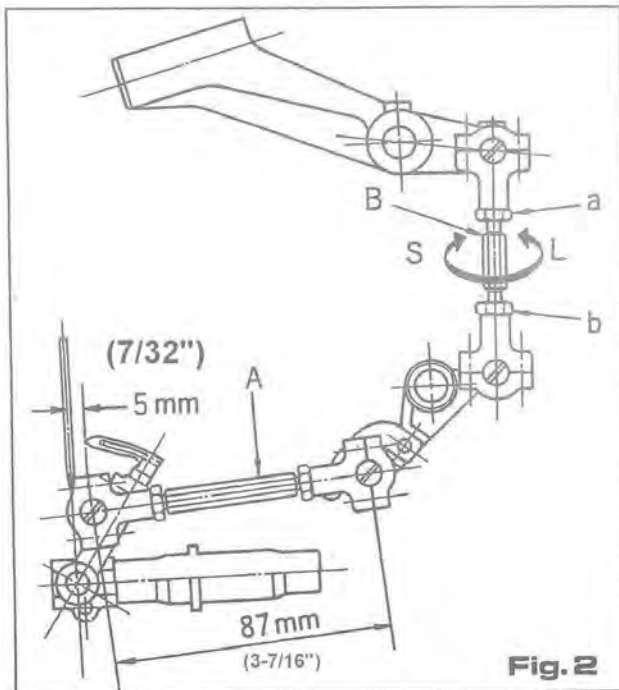
The machine has been properly adjusted before shipment from the factory. But if it needs re-adjustment for repair or replacement parts, proceed as follows; When adjusting, make sure that the electric wiring plug is removed from the consent.

6-1 Needle and Looper

Check the distance between needle center and looper edge. Turn the pulley by hand until the looper reaches its right furthest position, while keeping the clearance of 5mm between needle center and looper edge.

- 1) Confirm whether or not the distance between centers of ball joint (A) is being kept 87mm. Also pay special attention to the strict distance of 87mm, and if not, it will prevent you to adjust every part correctly.
- 2) Turn the pulley again by hand until looper reaches its left furthest position, while keeping the clearance of 5mm between needle center and looper edge to loose nuts (a) and (b) of joint rod (B). Fig. 2
In case the distance between centers is more than 5mm, turn joint rod (B) to "S" direction to decrease it.
In case the distance between centers is less than 5mm, turn joint rod (B) to "L" direction to increase it. Fig. 2

Make sure that the nuts (b) has left-handed thread.



6-2 Needle Height

When the looper moves left and right to turn pulley by hand, the looper and the needle shall be adjusted in such a way that the bottom of both holes will be entirely corresponded as shown in Fig. 3.

- 1) Check to make sure the needle is set in the needle bar as deep as it will go by loosening the needle bar clamping nut.
- 2) Make sure of setting a needle with its concave part facing correctly toward the looper when the needle is just going up from the lowest position.
- 3) Should it be necessary to change needle height, first remove the upper face plate.

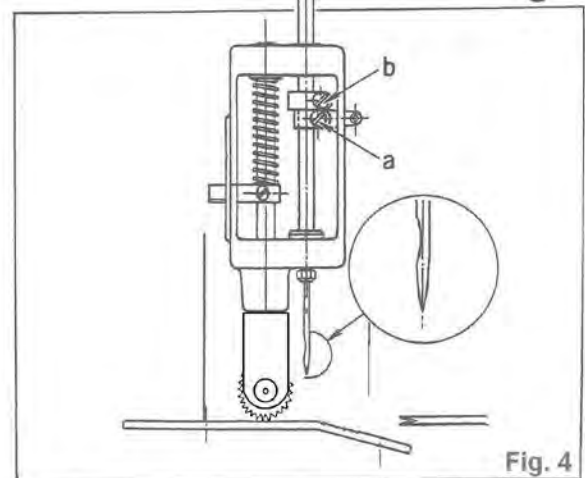
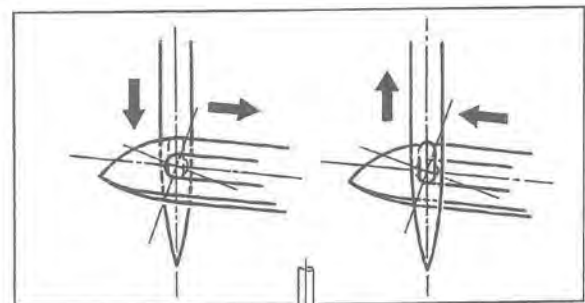
To raise the needle bar....

Loosen the screw (a), lower the needle bar connection to obtain proper distance required and tighten it. Then, loosen the screw (b), raise the needle bar until the needle bar connection touches the needle bar connecting stud and tighten it.

To lower the needle bar....

Loosen the screw (b), lower the needle bar to obtain proper distance required and tighten it. Then, loosen the screw (a), fix the needle bar connection at the place where it touches the needle bar connecting stud and tighten it.

- 4) Check once again if the direction of concave part of needle is correct or not.



6-3 Gap between Looper and Needle

Turn pulley by hand and fix eccentric cam so that the screw (a) may be horizontal position as shown in Fig. 5, while the looper is passing behind needle and the sharp point of looper is corresponded with needle center.

Afterwards, adjust the gap to be 0.05-0.1mm between looper and needle to confirm they do not clash with each other when the sharp point of looper is passing behind needle.

The adjustment of the gap shall be done by loosening screw (b) of looper oscillating arm.

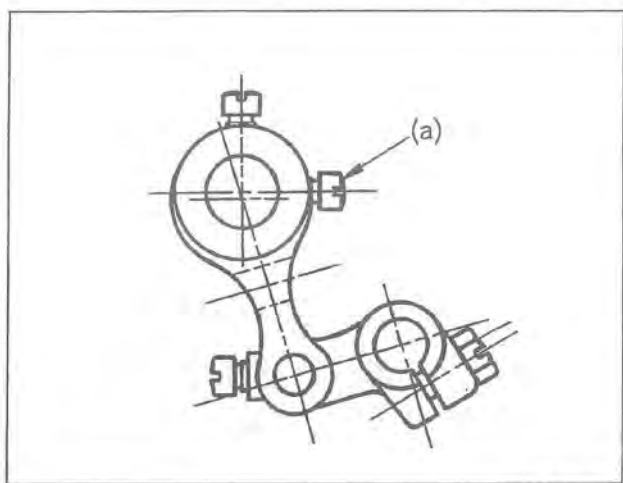


Fig. 5

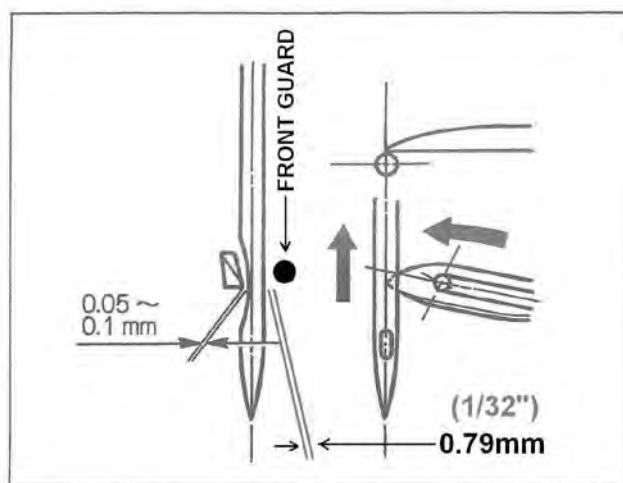


Fig. 6

6-4 Feed Dog Height (Fig. 7)

Adjust the height of feed dog to loosen screw (a) in order to obtain the most appropriate protrusion of 1.0- 1.2mm above the upper surface of throat plate after regulating the screw (b).

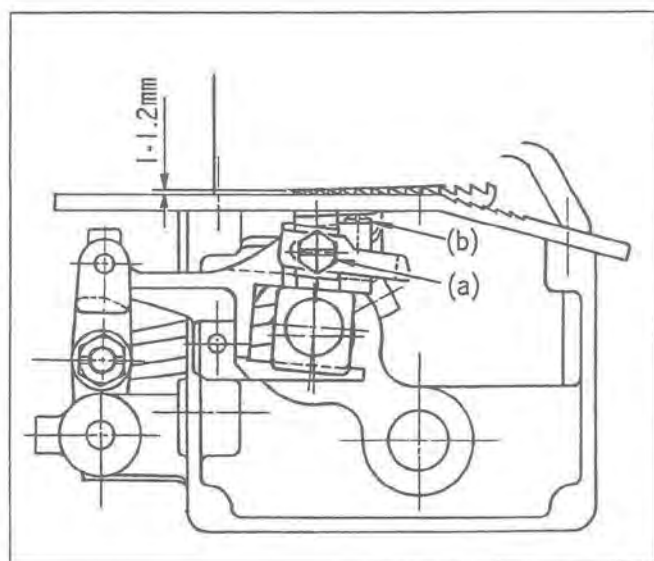


Fig. 7

6-5 Needle Guard Adjustment

Adjust the clearance between needle guard and needle to zero when the needle is just coming up from its lowest position as shown in Fig. 8 and tighten the screw (a).

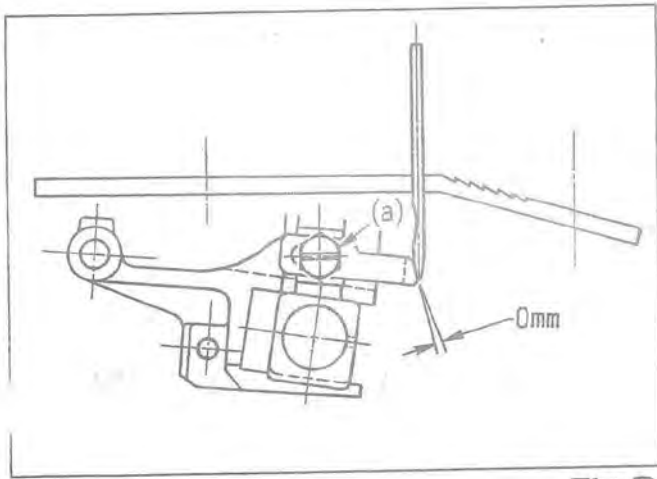


Fig. 8

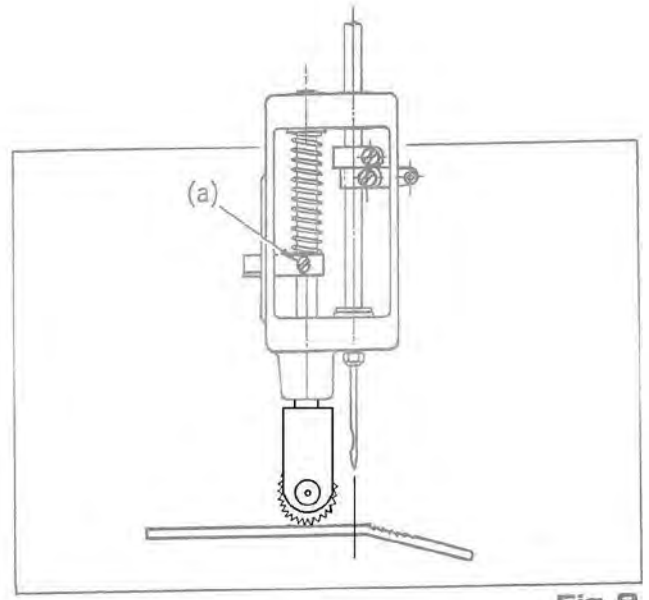


Fig. 9

PBB 4 x 4 only

When binding oval or round shaped carpets, please disengage the rear upper puller.

[NOTES ON CARRYING AND STORAGE]

1. Carry the machine in a storage box.
2. After using of the machine, unplug, clean the dirt, oil all parts and then put it into a storage box. We suggest you to use a soft brush to clean the machine.

ORDERING PARTS

1. Description of each part and its stamp number is described in this parts list. Screws and nuts for parts are shown adjacent to the relevant parts. When ordering parts, describe clearly stamp number with its name of part.
 2. The parts which have no Ref. Number can not be delivered independently; always order it as an assembly.
 3. A set of assembled parts is represented by the stamp number of its main parts.
 4. The last figure on the parts stamp number advances on each improvement of the parts.
 5. Parts No. described in [] of Remarks means old parts No.
- * The parts list is subject to change without prior notice.

When ordering parts for this binder, always start with PBB then the part number(s).

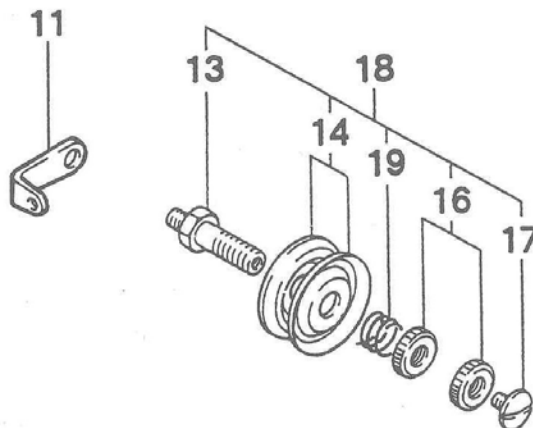
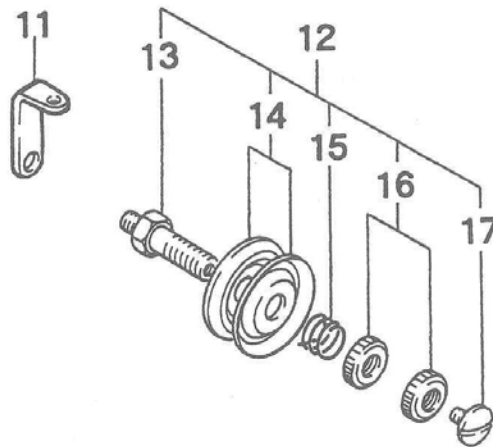
Example: PBB203081, Looper

PARTS LIST CONTENTS

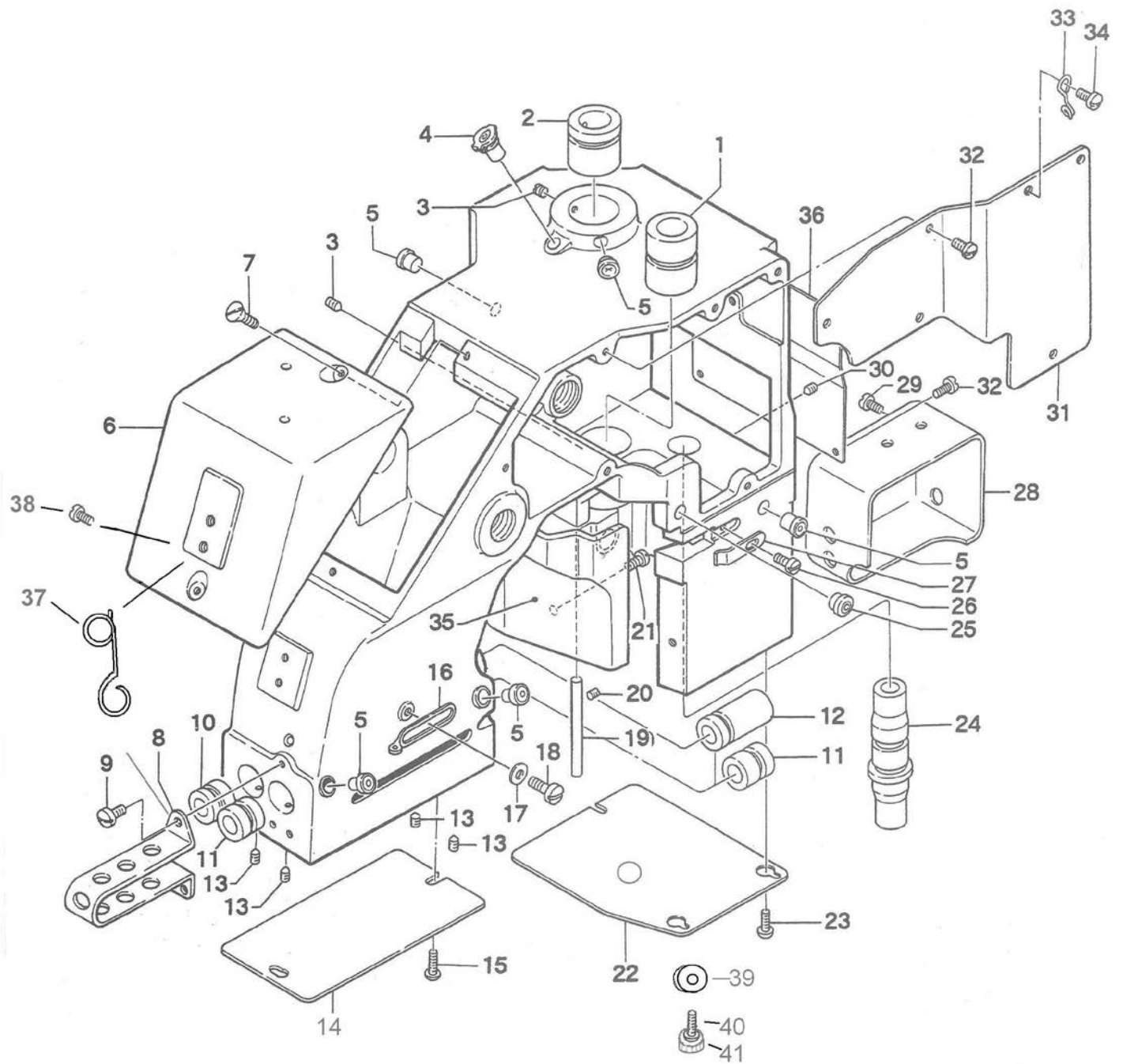
(1)	THREAD STAND AND THREAD TENSION PARTS.....	10
(2)	COVERS, BUSHINGS AND OILING PARTS.....	11 – 12
(3)	NEEDLE BAR, PRESSER BAR AND DRIVING PARTS.....	13 – 14
(4)	LOOPER DRIVING PARTS.....	15 – 16
(5)	FEED DRIVING AND THREAD CUTTER PARTS.....	17 – 18
(6)	MOTOR, SWITCH AND HANDLE PARTS (FOR TOTALLY ENCLOSED TYPE MOTOR).....	19 – 20

(1) THREAD STAND AND THREAD TENSION PARTS

Ref. No.	Part. No.	Description	Quantity	Remarks
11	245071	Thread Tension Eyelet	2	(13 – 17)
12	245081B	Thread Tension Assembly for Looper	1	
13	245081	Tension Post	2	
14	065261	Tension Disc	4	
15	205091	Tension Spring	1	
16	245091	Tension Nut	4	
17	9/64S40011	Screw for 245081	2	
18	245081A	Thread Tension Assembly for Needle	1	(13,14,16,17,19)
19	245101	Tension Spring	1	



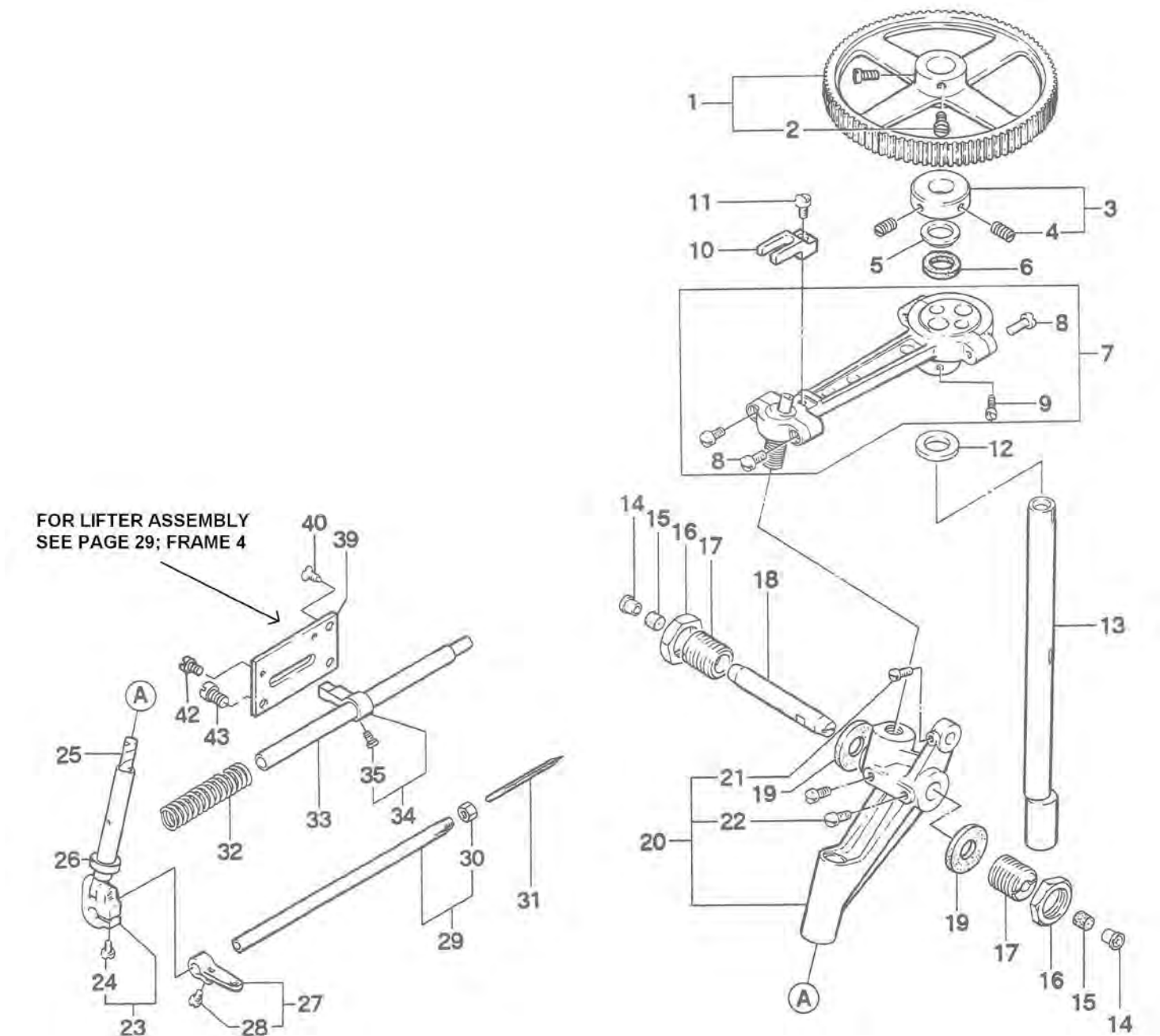
(2) COVERS, BUSHINGS AND OILING PARTS



(2) COVERS, BUSHINGS AND OILING PARTS

Ref. No.	Part. No.	Description	Quantity	Remarks
1	241111	Main Shaft Bushing, front	1	
2	241122	Main Shaft Bushing, rear	1	
3	9/64S40502	Screw for 241122, 241111	2	
4	D01003	Oil Cup	1	
5	D01001	Push Oil Cup	5	
6	205191	Top Cover	1	
7	11/64S40007	Screw for 205191	2	
8	202091	Needle Bar Guard	1	
9	9/64S40005	Screw for 202091	3	
10	242211	Presser Bar Bushing, upper	1	
11	202051	Needle Bar Bushing	2	
12	242221	Presser Bar Bushing, lower	1	
13	9/64S40502	Screw for 242211, 202051, 242221	4	
14	205021	Face Plate	1	
15	9/64S40065	Screw for 205021	2	
16	P5011	Thread Controller for needle	1	
17	11/64W15103	Washer	1	
18	3/16S28002	Screw	1	
19	205011	Looper Cover Hinge Pin	1	
20	9/64S40501	Screw for 205011	1	
21	9/64S40058	Looper Cover Extension Lock Screw	1	
22	205032	End Cover	1	
23	9/64S40065	Screw for 205032	3	
24	203031	Looper Rocker Shaft Bushing	1	
25	P5161	Thread Guide Bushing for Looper	1	
26	9/64S40001	Looper Cover Extension Lock Screw	1	
27	P1091	Looper Cover Extension Lock Spring	2	
28	205071-1	Feed Rocker Cover (2 x 2)	1	
29	9/64S40005	Screw for 205071	2	
30	9/64S40502	Screw for 203031	1	
31	205042	Side Cover	1	
32	9/64S40005	Screw for 205042, 205201	9	
33	P5031	Thread Guide Wire for Looper	1	
34	11/64S40005	Screw for P5031	1	
35	205002	Cover	1	
36	205201	Inside Cover	1	
37	52A	Thread Guide	2	
38	9/64S40001	Screw for 52A	1	
39	10-24N	Lock Nut	1	
40	10-24S	Screw	1	
41	41KN	Knob	1	

(3) NEEDLE BAR, PRESSER BAR AND DRIVING PARTS

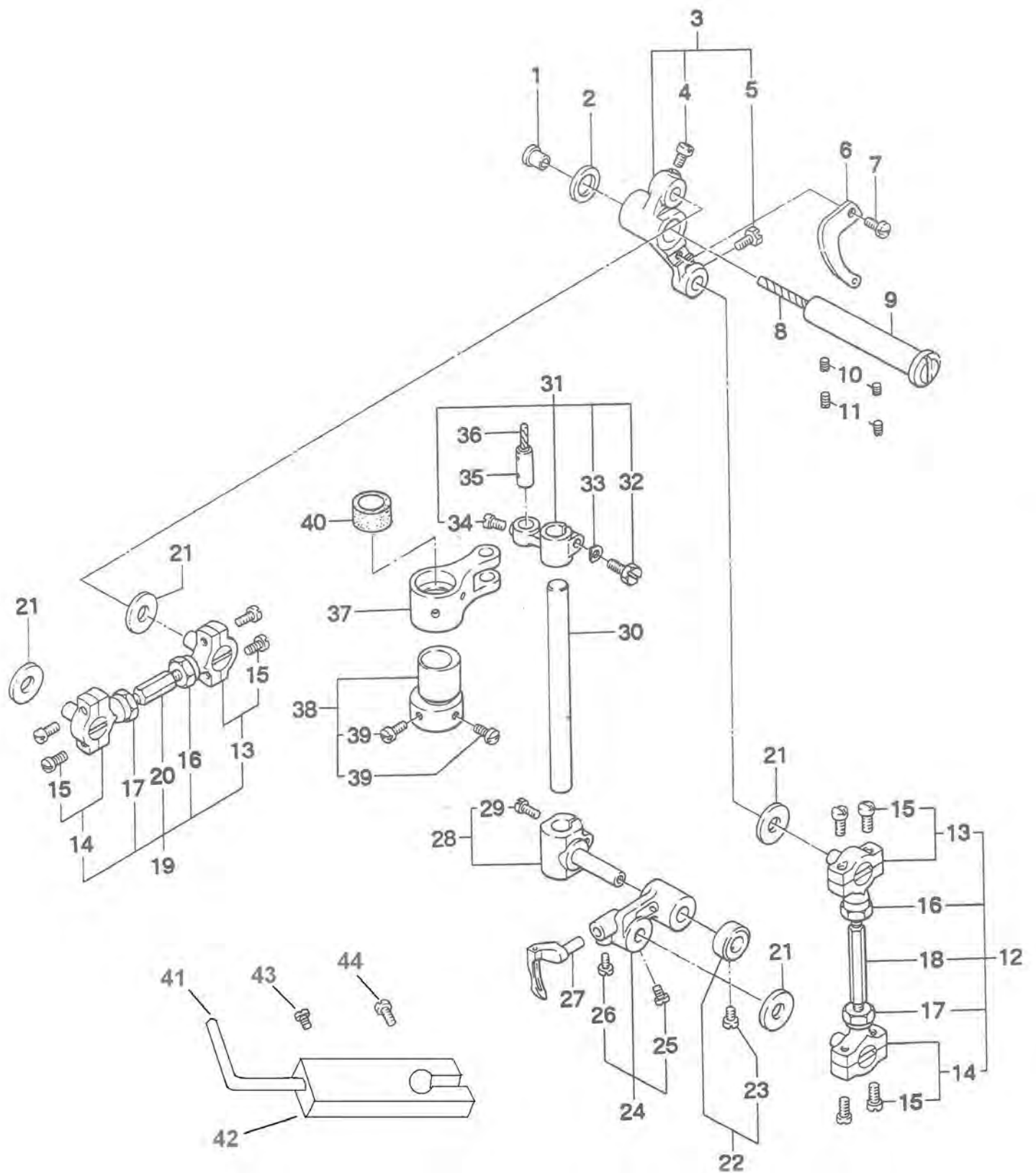


Ref. No.	Part. No.	Description	Quantity	Remarks
1	241091	Synchro Pulley	1	(2)
2	3/16S28001	Screw for 241091	2	
3	241131	Retaining Collar	1	(4)
4	11/64s40501	Screw for 241131	2	
5	241161	Spacer	1	
6	205131	Oil Felt	1	
7	202001A	Needle lever connecting rod Ass'y	1	(8, 9)
8	11/64S40090	Screw for Needle Lever Connecting rod cap	4	
9	11/64S40001	Screw for Eccentric Cam	2	

(3) NEEDLE BAR, PRESSER BAR AND DRIVING PARTS

Ref. No.	Part. No.	Description	Quantity	Remarks
10	076062	Ball Stud Guide Fork	1	
11	9/64S40003	Screw for 076062	1	
12	205131	Oil Felt	1	
13	201011	Main Shaft	1	
14	D01001	Push Oil Cup	2	
15	245411	Oil Felt	2	
16	5/8N18101	Nut for 242081	2	
17	242081	Adjusting Stud	2	
18	202041	Needle Lever Stud	1	
19	245231	Oil Felt	2	
20	202033A	Needle Lever Assembly	1	(21, 22)
21	11/64S40006	Screw for 013081B	1	
22	3/16S28005	Screw for 202033A	2	
23	202071A	Needle Bar Connection Assembly	1	(24)
24	11/64S40003	Screw for 202071A	1	
25	205171	Oil Felt	1	
26	245371	Oil Felt	1	
27	202081	Thread Take-Up for Needle	1	(28)
28	11/64S40002	Screw for 202081	1	
29	202061A	Needle Bar With Nut	1	(30)
30	P2412	Needle Lock Nut	1	
31	B01002	Needle (DNx1 #25)	1	
32	242191	Presser Foot Lifter	1	
33	202101	Presser Bar	1	
34	242181	Presser Bar Connection	1	(35)
35	11/64S40003	Screw for 242181	1	
39	242171	Presser Foot Lifter Base	1	
40	11/64S40007	Screw for 242171	2	
42	9/64S40001	Presser Foot Lifter Stopper Screw	1	
43	11/64S40002	Screw for 242171	1	

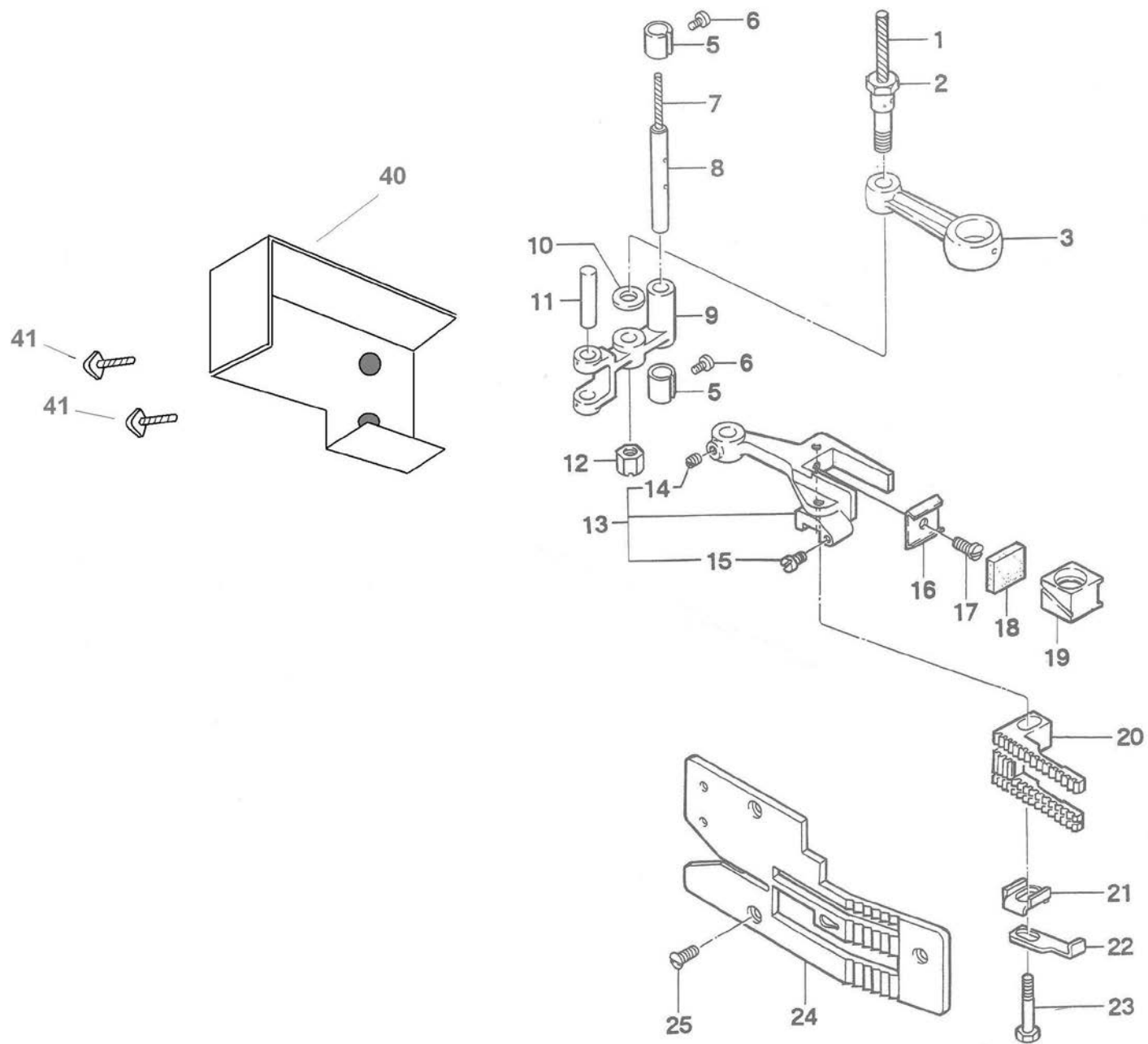
(4) LOOPER DRIVING PARTS



(4) LOOPER DRIVING PARTS

Ref. No.	Part. No.	Description	Quantity	Remarks
1	D01001	Push Oil Cup	1	(4 , 5)
2	P3051	Spacer	1	
3	203091	Looper Bell Crank	1	
4	11/64S40049	Screw for 013081B	1	
5	11/64S40049	Screw for 203121A	1	
6	203111	Thread Take-Up for Looper	1	
7	9/64S40004	Screw for 203111	1	
8	205211	Oil Felt	1	
9	203101	Looper Bell Crank Hinge Stud	1	
10	15/64S28522	Screw for 203101	2	
11	15/64S28511	Screw for 203101	2	
12	203121A	Ball Joint Rod Assembly	1	
13	013042B	Ball Joint Assembly	2	(15)
14	013062A	Ball Joint Assembly	2	
15	9/64S40061	Screw for Ball Joint	8	(13 - 17, 20)
16	11/64N40203L	Nut for Ball Joint Rod	2	
17	11/64N40203	Nut for Ball Joint Rod	2	
18	203121	Ball Joint Rod	1	
19	013081B	Ball Joint Rod Assembly	1	
20	013081	Ball Joint Rod	1	
21	9/32W20108	Fiber	4	
22	203071	Looper Rocker Collar	1	
23	11/64S40076	Screw for 203071	1	
24	203061	Looper Rocker	1	(25, 26)
25	11/64S40002	Screw for 203121A	1	
26	11/64S40002	Screw for 203081	1	(29)
27	203081	Looper	1	
28	203051	Looper Rocker Frame	1	
29	11/64S40089	Screw for 203051	1	
30	203041	Looper Rocker Shaft	1	
31	203021	Looper Rocker Shaft Arm	1	(32 -34)
32	11/64S40089	Screw for P2071	1	
33	11/64W10104	Washer for 203021	1	(39)
34	11/64S40001	Screw for P2071	1	
35	P2071	Link Pin	1	
36	205141	Oil Felt	1	
37	203011	Looper Avoid Link	1	
38	203001	Looper Avoid Eccentric	1	
39	11/64S40001	Screw for 203001	2	
40	205181	Oil Felt	1	
41	41302	Thread Loop Retainer	1	
42	41303	Thread Loop Pusher Holder	1	
43	41304	Screw, 10-32 x 3/16	1	
44	41305	Screw, 8/32 x 1/2"	1	

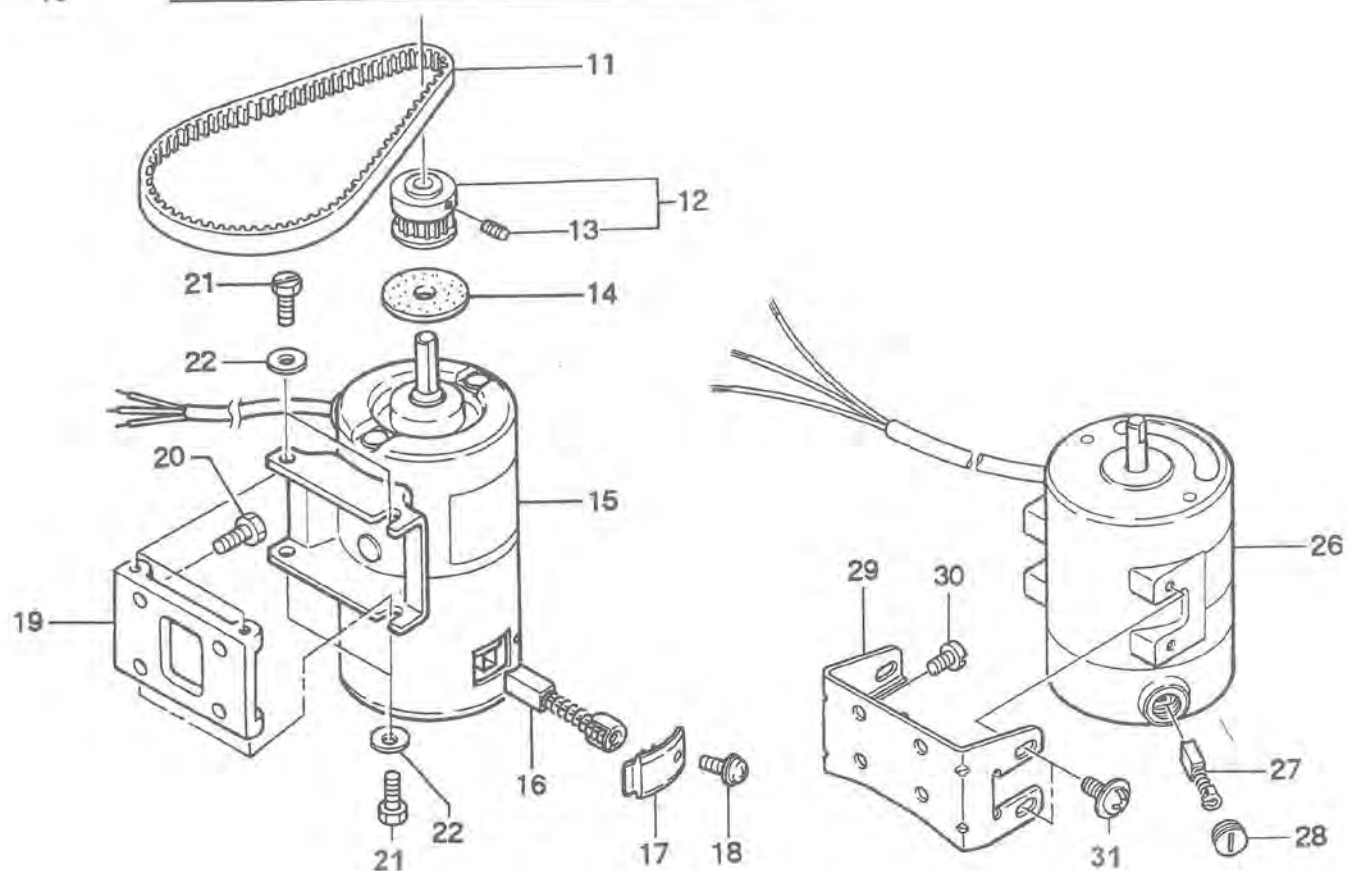
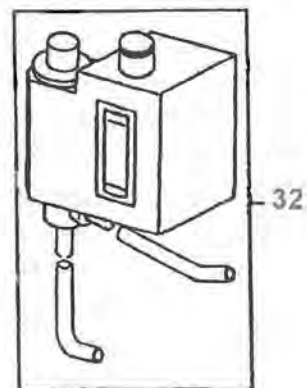
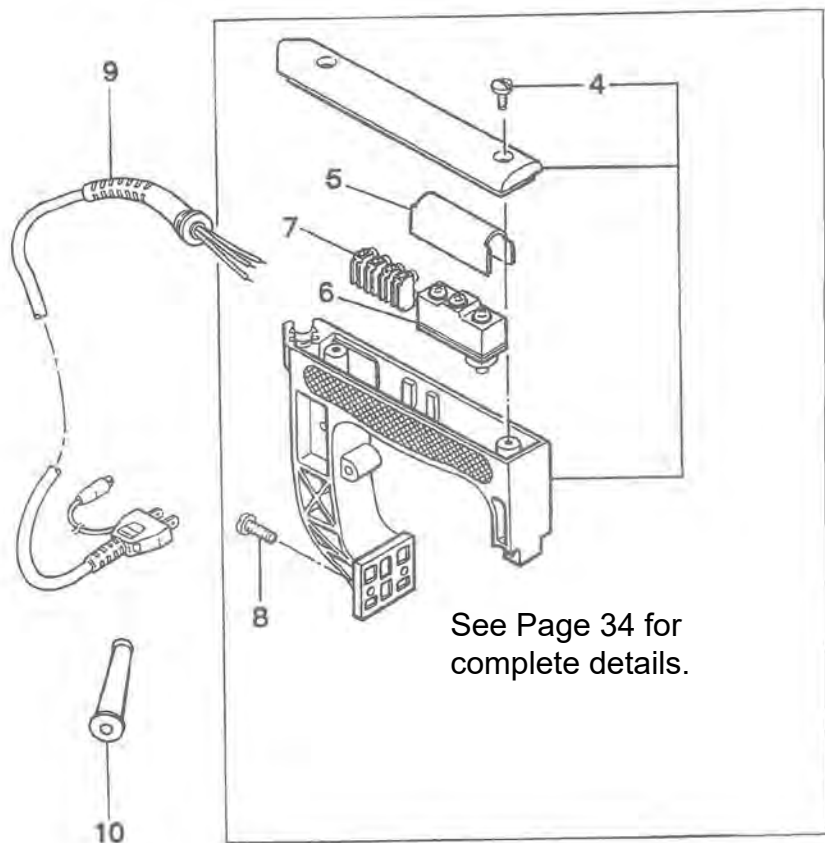
(5) FEED DRIVING AND THREAD CUTTER PARTS



(5) FEED DRIVING AND THREAD CUTTER PARTS

Ref. No.	Part. No.	Description	Quantity	Remarks
1	205161	Oil Felt	1	(14, 15)
2	204041	Feed Rocker Connecting Rod Pin	1	
3	204031	Feed Rocker Connecting Rod	1	
5	204001	Feed Rocker Shaft Bushing	2	
6	11/64S40002	Screw for 204001	2	
7	205151	Oil Felt	1	
8	204021	Feed Rocker Shaft	1	
9	204011	Feed Rocker	1	
10	P4031	Washer for 204041	1	
11	P4101	Feed Bar Shaft	1	
12	15/64N28208	Nut for 204041	1	
13	204062	Feed Bar	1	
14	11/64S40502	Screw for P4101	1	
15	9/64S40001	Feed Dog Height Adjusting Screw	1	
16	205111	Lubricating Felt Holder	1	
17	1/8S44009	Screw for 205111	1	
18	205121	Lubricating Felt	1	
19	204051	Feed Lifting Block	1	
20	204071	Feed Dog	1	
21	P4161	Needle Guard Holder	1	
22	204081	Needle Guard	1	
23	11/64S40012	Screw for 204071	1	
24	204091	Throat Plate	1	
25	9/64S40043	Screw for 204091	3	
40	205071-2	Feed Rocker Cover (4 x 4)	1	
41	9/64S40005	Screw for 205071	2	

(6) MOTOR, SWITCH AND HANDLE PARTS (FOR TOTALLY ENCLOSED TYPE MOTOR)



(6) MOTOR, SWITCH AND HANDLE PARTS (FOR TOTALLY ENCLOSED TYPE MOTOR)

Ref. No.	Part. No.	Description	Quantity	Remarks
1	241024CS	Handle Assembly	1	(2, 5 - 7)
2	241024C	Handle Assembly	1	(3, 4)
3	241024	Handle	1	(4)
4	9/64S40011	Screw for 241024C	2	
5	245132	Micro Switch Cover	1	
6	C02001	Micro Switch (Z-15GK655-B)	1	
	C02006	Micro Switch (X-10GD-B) for DC Motor	1	
7	C05008	Flexible Terminal Block (ML-SK-1,4P)	1	
8	15/64S28021	Screw for 241024C	2	
9	C04001	Cabtyre Cord, with Plug (Standard Type)	1	
	C04003	Cabtyre Cord, with Plug (American Type)	1	
	C04004	Cabtyre Cord, with Plug (British Type)	1	
	C04005	Cabtyre Cord, with Plug (German Type)	1	
	C04006	Cabtyre Cord, with Plug (French Type)	1	
	C04007	Cabtyre Cord, with Plug (Australian Type)	1	
	C04009	Cabtyre Cord, with Plug (for DC Motor)	1	
10	211151	Rubber Bushing (for C04003-C04007)	1	
11	F01002	Timing Belt 180XL	1	(15)
12	241082	Motor Pulley	1	(13)
13	11/64S40504	Screw for 241081	2	
14	C07005	Rubber Ring	1	
15	C01028	Universal Motor (220V-90W)	1	(15 -18)
	C01029	Universal Motor (240V-90W)	1	(15 - 18)
	C01030	Universal Motor (110V-90W)	1	(15 - 18)
16	C08004	Carbon Brush for AC Motor	2	
	C08005	Carbon Brush for DC Motor	2	
17	C07003	Cap	2	
18	4S3x6-W	Screw	2	
19	241072	Motor Base B	1	
20	15/64S28004	Screw for 241072	4	
21	11/64S40075	Screw for Motor	4	
22	11/64W10101	Washer for Motor	4	
26	C01035	Universal Motor (220V) NSM-2	1	(27, 28)
	C01036	Universal Motor (230V ~ 240V) NSM-1	1	(27, 28)
	C01037	Universal Motor (110V ~ 120V) NSM-3	1	(27, 28)
	C01023	Universal Motor (UL110V ~ 120V)	1	(27, 28)
27	C08008	Carbon Brush	1	
28	C07004	Cap	1	
29	241075	Motor Base	1	
30	15/64S28004	Screw	4	
31	13S5x10	Screw for Motor	4	
32	3201224	Pump Oiler with Oil Tube	1	

NUMERICAL INDEX OF PARTS

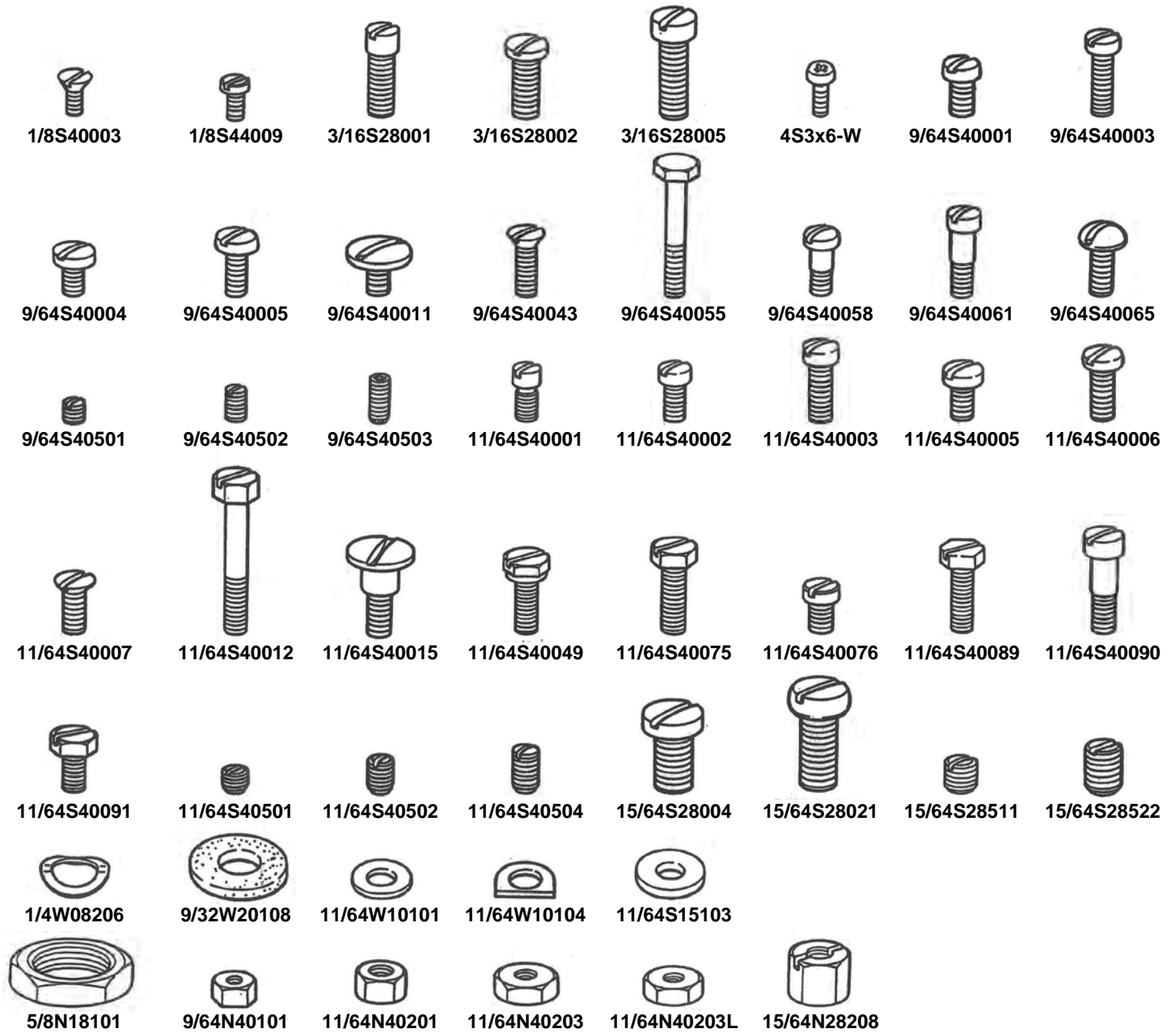
PART NO.	PAGE	PART NO.	PAGE	PART NO.	PAGE
013042B	13-13	205042	9-31	245231	10-19
013062A	13-14	205071-1	9-28	245371	11-26
013081	13-20	205071-2	15-40	245411	10-15
013081B	13-19	205091	7-15		
065261	7-14	205111	9-19; 15-16	P1091	9-27
				P2071	13-35
076062	11-10	205121	15-18	P2412	11-30
201011	11-13	205131	10-6; 11-12	P3051	13-2
202001A	10-7	205141	13-36		
202033A	11-20	205151	15-7	P4031	15-10
202041	11-18	205161	15-1	P4101	15-11
				P4161	15-21
202051	9-11	205171	11-25	P5011	9-16
202061A	11-29	205181	13-40	P5031	9-33
202071A	11-23	205191	9-6		
202081	11-27	205201	9-36	P5161	9-25
202091	9-8	205211	13-8		
202101	11-33	211151	17-10		
203001	13-38	241024	17-3	OTHER	
203011	13-37	241024C	17-2		
203021	13-31	241024CS	17-1		
		241072	17-19		
203031	9-24				
203041	13-30	241075	17-29	B01002	11-31
203051	13-28	241082	17-12	C01023	17-26
203061	13-24	241091	10-1	C01028	17-15
203071	13-22	241111	9-1	C01029	17-15
		241122	9-2	C01030	17-15
203081	13-27			C01035	17-26
203091	13-3	241131	10-3	C01036	17-26
203101	13-9	241161	10-5	C01037	17-26
203111	13-6	242081	11-17	C02001	17-6
203121	13-18	242171	11-39	C02006	17-6
		242181	11-34		
203121A	13-12			C04001	17-9
204001	15-5	242191	11-32	C04003	17-9
204011	15-9	242211	9-10	C04004	17-9
204021	15-8	242221	9-12	C04005	17-9
204031	15-3	245071	7-11	C04006	17-9
		245081	7-13	C04007	17-9
204041	15-2			C04009	17-9
204051	15-19	245081A	7-18	C05008	17-7
204062	15-13	245081B	7-12	C07003	17-17
204071	15-20	245091	7-16	C07004	17-28
204081	15-22	245101	7-19		
		245132	17-5	C07005	17-14
204091	15-24			C08004	17-16
205002	9-35			C08005	17-16
205011	9-19			C08008	17-27
205021	9-14				
205032	9-22				

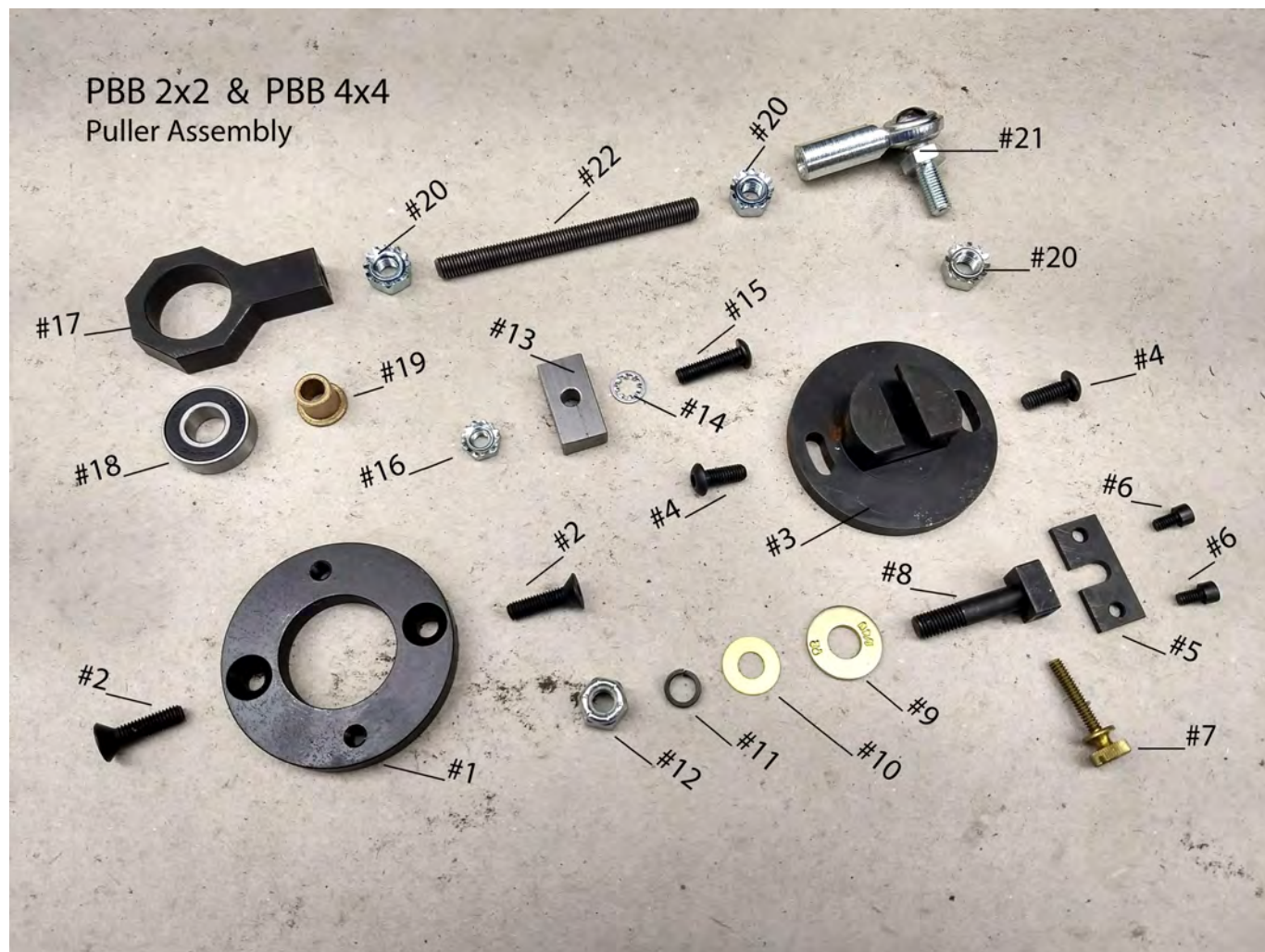
NUMERICAL INDEX OF PARTS

PART NO.	PAGE	PART NO.	PAGE	PART NO.	PAGE
D01001	9-5; 11-14; 13-1	11/64S40076	13-23	3201224	17-32
		11/64S40089	13-29, 32		
D01003	9-4	11/64S40090	10-8	41KN	9-41
F01002	17-11	11/64S40501	10-4		
		11/64S40502	15-14	41302	13-41
SCREW				41303	13-42
		11/64S40504	17-13	41304	13-43
1/8S44009	15-17	3/16S28001	10-2	41305	13-44
		3/16S28002	9-18		
9/64S40001	9-26, 38; 11-42; 15-15	3/16S28005	11-22	52A	9-37
		15/64S28004	17-20, 30		
9/64S40003	11-11	15/64S28021	17-8		
9/64S40004	13-7	15/64S28511	13-11		
9/64S40005	9-9, 29, 32; 15-41	15/64S28522	13-10		
		4S3x6-W	17-18		
9/64S40011	7-17; 17-4	10-24S	9-40		
9/64S40043	15-25				
9/64S40058	9-21	13S5x10	17-31		
9/64S40061	13-15				
		NUT			
9/64S40065	9-15, 23				
9/64S40501	9-20	11/64N40203	13-17		
9/64S40502	9-13, 13, 30	11/64N40203L	13-16		
		15/64N28208	15-12		
11/64S40001	10-9; 13-34, 39	5/8N18101	11-16		
		10-24N	9-39		
11/64S40002	11-28, 43; 13-25, 26; 15-6				
		WASHER			
11/64S40003	11-24, 35				
11/64S40005	9-34	11/64W10101	17-22		
		11/64W10104	13-33		
		11/64W15103	9-17		
		9/32W20108	13-21		
11/64S40006	11-21				
11/64S40007	9-7, 11-40				
11/64S40012	15-23				
11/64S40049	13-4, 5				
11/64S40075	17-21				

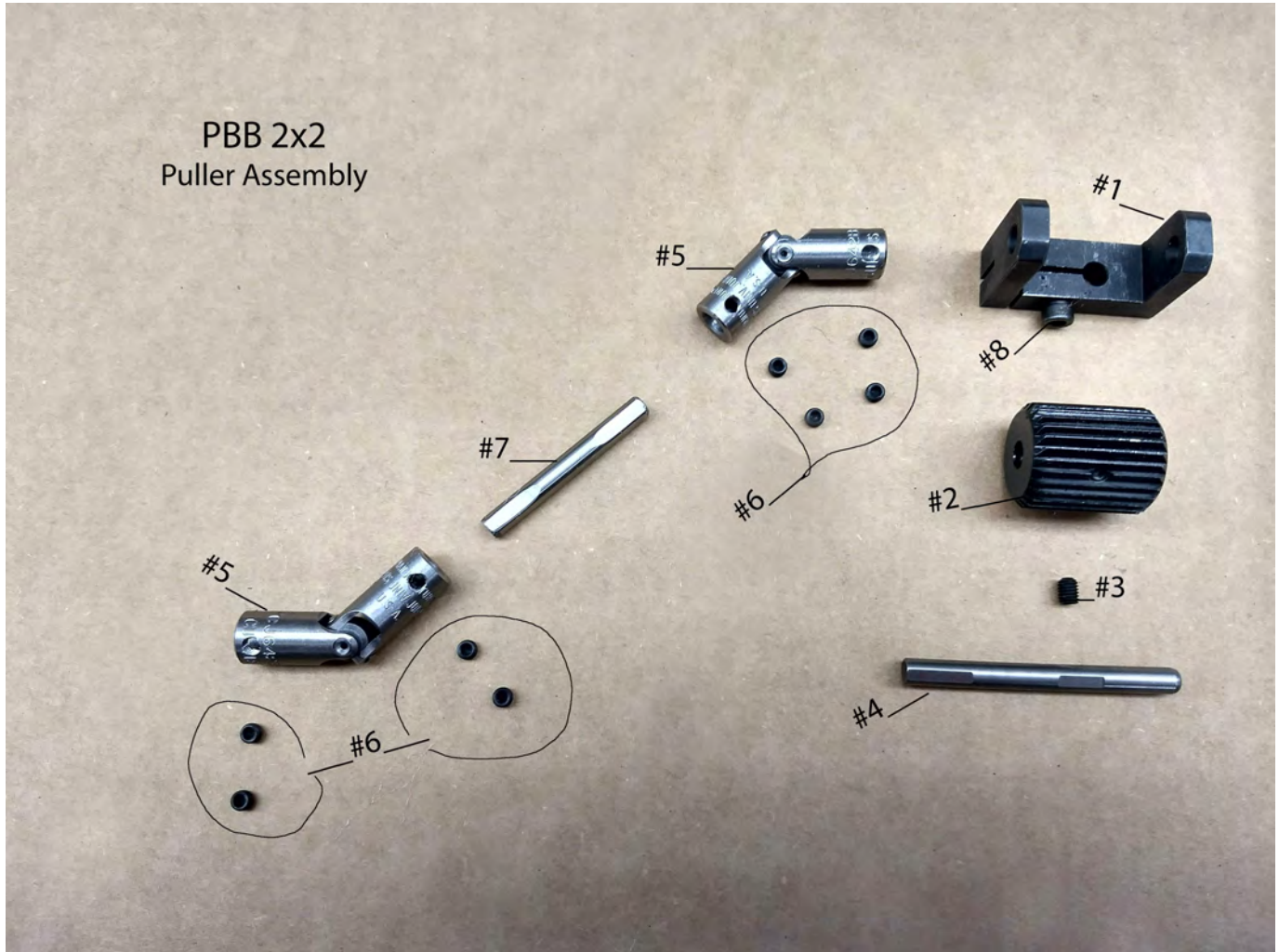
SCREW, NUT & WASHER

FULL SIZE

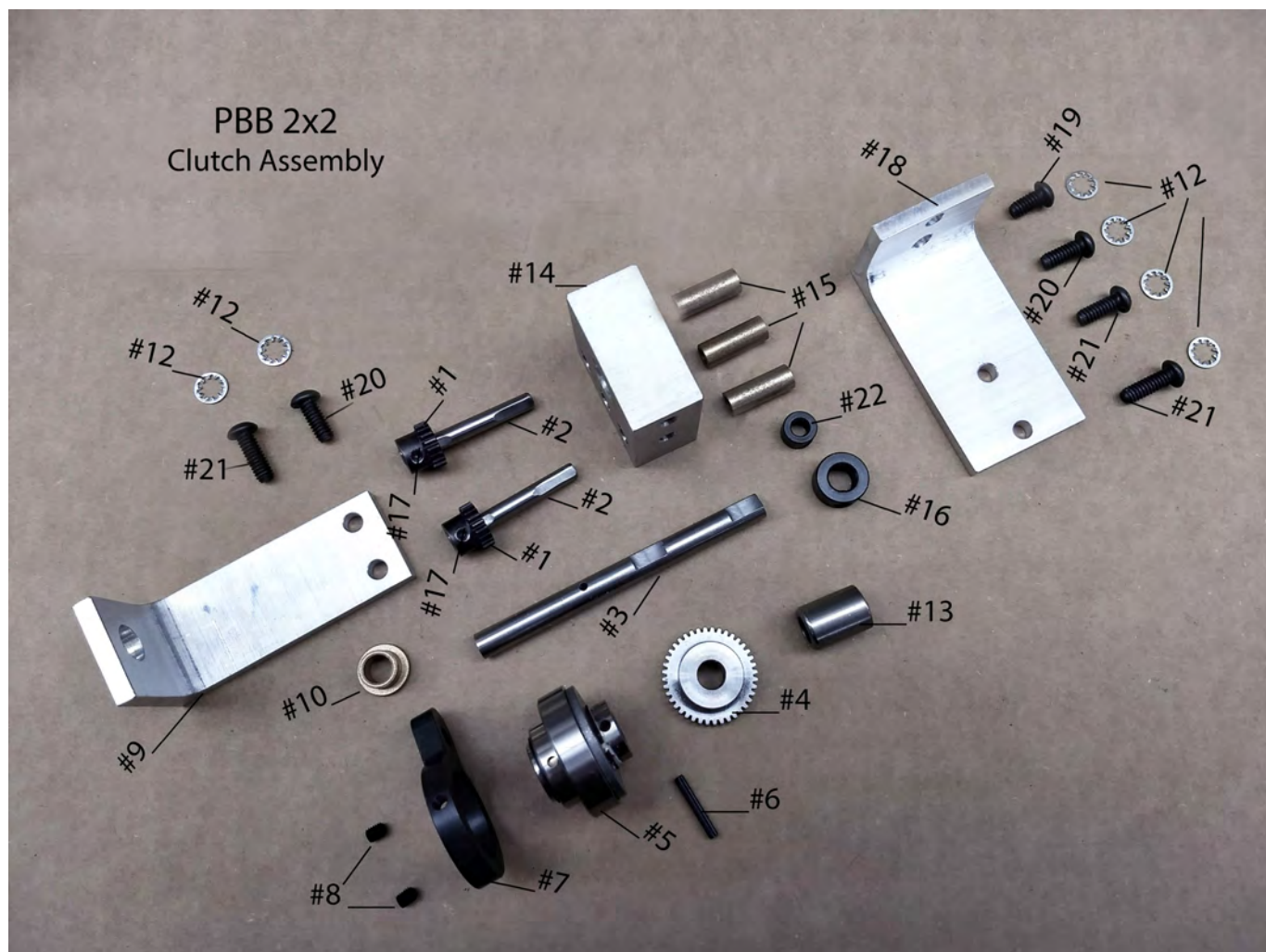




#1- PBB1002	Back Plate	#13- PBB1007BW	Balance Weight
#2- PBB1002SC	10-32 x 3/4" Screw (2)	#14- PBB1007LW	#10 Internal Lock Washer
#3- PBB1003	Puller Eccentric	#15- PBB1007SC	10-32 x 3/4" Screw (2)
#4- PBB1003SCB	10-32 x 1/2" Screw (2)	#16- PBB1007LN	10-32 Lock Nut
#5- PBB1003P	Stop Plate	#17- PBB1004C	Cam Crank
#6- PBB1003SC2	6-40 x 1/4" Screw (2)	#18- PBB1004BR	Ball Bearing
#7- PBB1003SC1	6-40 x 1" Adjusting Screw (1)	#19- PBB1004BB	Bronze Bearing
#8- PBB1003A	Adjusting Side Block Stud	#20- PBB1006N	1/4-28 Lock Nut (3)
#9- PBB1003HDW	#1/4 Thick Washer	#21- PBB1005BJ	Ball Joint With Stud
#10- PBB1003W	#1/4 Washer	#22- PBB1006R	Adjusting Rod
#11- PBB1003LW	#1/4 Lock Washer		
#12- PBB1003N	1/4-28 Lock Nut		



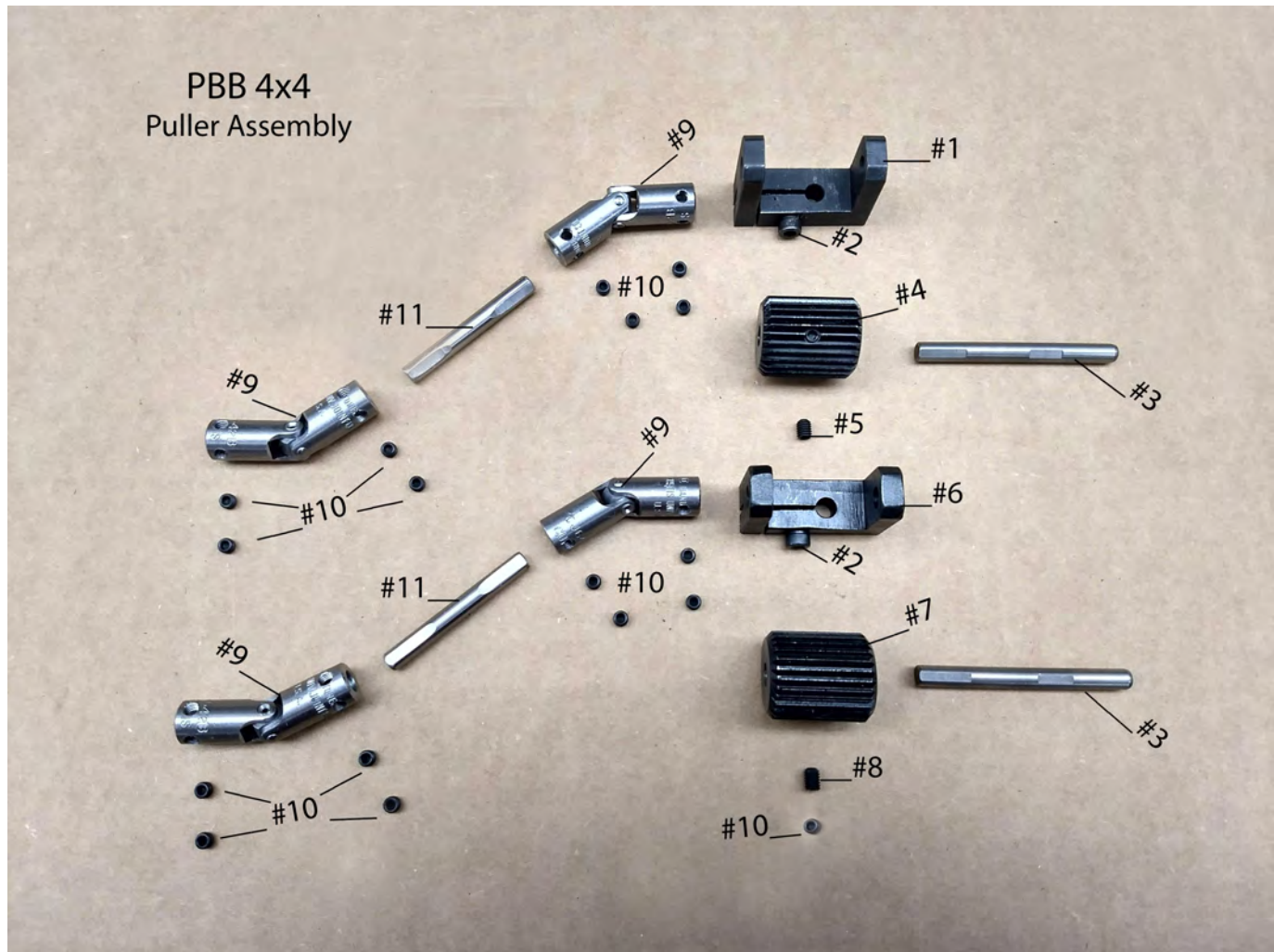
#1- PBB2001FY	Feed Roller Yoke Front
#2- PBB2002R	Feed Roller Front
#3- PBB2002RSC	10-32 x 1/4" Screw
#4- PBB2003S	Feed Roller Shaft
#5- PBB2004B	Universal Joint (2)
#6- PBB2004SC	10-32 x 1/8" Screw (8)
#7- PBB2005S	Shaft
#8- PBB2002SCL	10/32 x 1/2" Screw



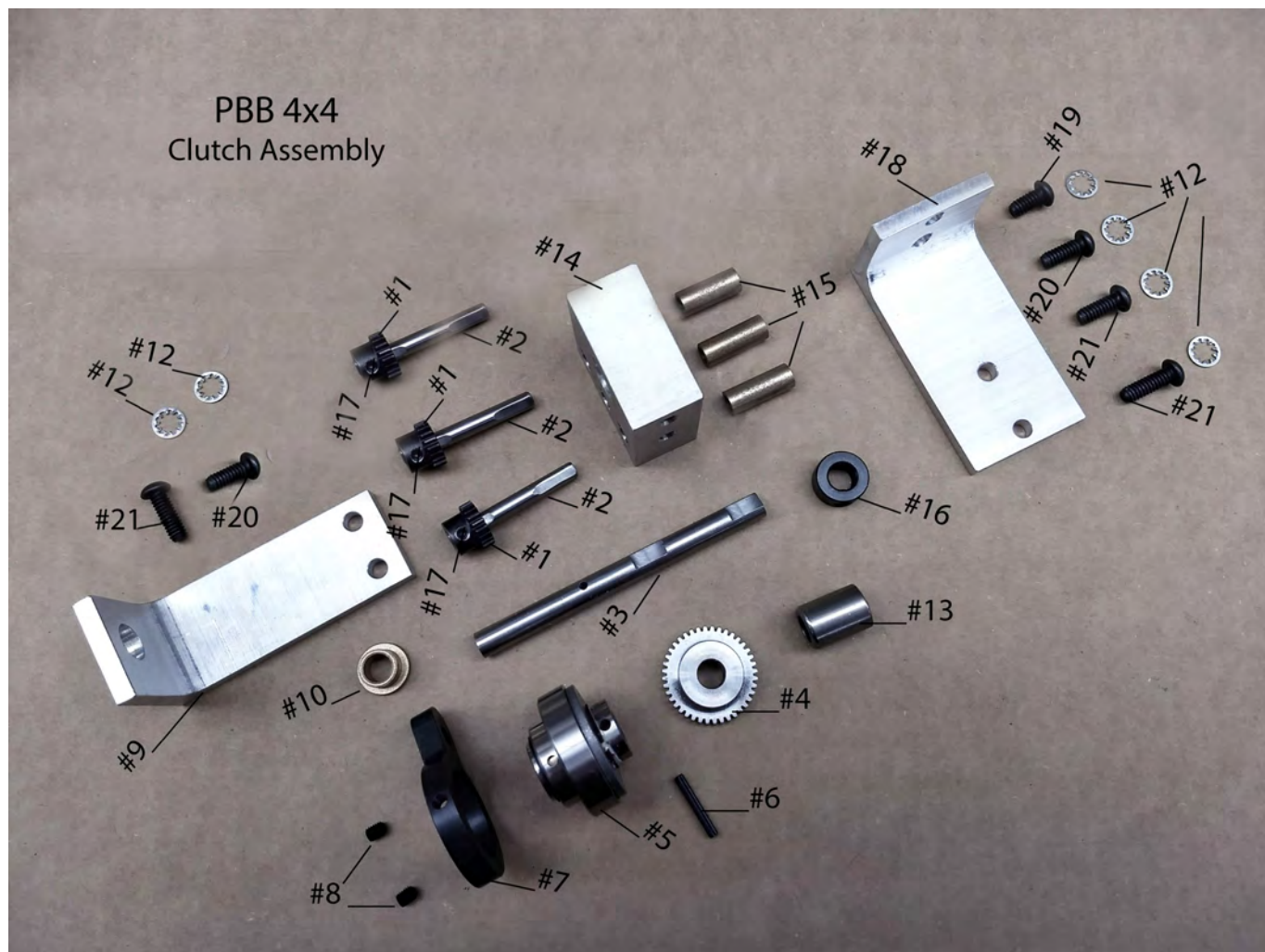
#1- PBB2008G	Gear, Small (2)
#2- PBB2005S	Gear Shaft (2)
#3- PBB2006SL	Large Gear Shaft
#4- PBB2009G	Gear, Large (1)
#5- PBB2010CL	Main Clutch
#6- PBB2010P	Pin
#7- PBB2010C	Clutch Crank
#8- PBB2002RSC	10-32 x 1/4" Screw (2)
#9- PBB2011	Clutch Support Bracket
#10- PBB2011B	Bronze Bushing

#12- PBB2013SW	#1/4 Internal Lock Washer (6)
#13- PBB2012CL	One Way Bearing
#14- PBB2012NS	New Style Gear Block
#15- PBB2013B	Bronze Bushing (3)
#16- PBB2006CL	3/8" Collar
#17- PBB2004SC	10-32 x 1/8" Screw (2)
#18- PBB2014	Gear Block Support Bracket
#19- PBB2013SC	1/4-20 x 1/2" Screw (1)
#20- PBB2013SCA	1/4-20 x 5/8" Screw (2)
#21- PBB2013SCB	1/4-20 x 3/4" Screw (3)
#22- PBB2008CS	1/4" Collar

Note: There is no number #11.



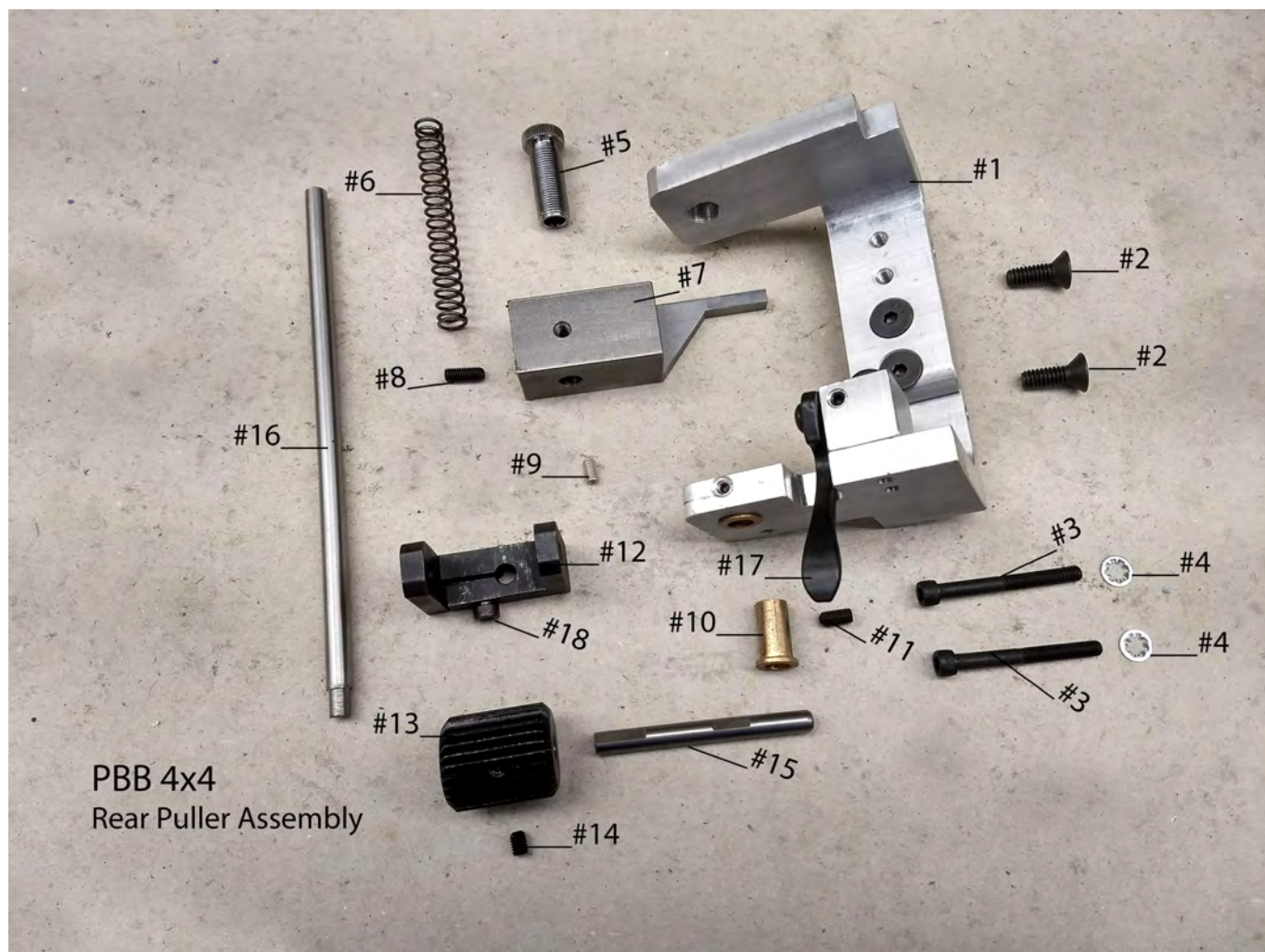
- | | |
|----------------|-------------------------|
| #1- PBB2001FY | Feed Roller Yoke Front |
| #2- PBB2002SCL | 10/32 x 1/2" Screw |
| #3- PBB2003S | Feed Roller Shaft (2) |
| #4- PBB2002R | Feed Roller Front |
| #5- PBB2002RSC | 10-32 x 1/4" Screw |
| #6- PBB2001FY | Feed Roller Yoke Rear |
| #7- PBB2002R | Feed Roller Rear |
| #8- PBB2002RSC | 10-32 x 1/4" Screw |
| #9- PBB2004B | Universal Joint (4) |
| #10- PBB2004SC | 10-32 x 1/8" Screw (17) |
| #11- PBB2005S | Shaft (2) |



#1- PBB2008G	Gear, Small (3)
#2- PBB2005S	Gear Shaft (3)
#3- PBB2006SL	Large Gear Shaft
#4- PBB2009G	Gear, Large (1)
#5- PBB2010CL	Main Clutch
#6- PBB2010P	Pin
#7- PBB2010C	Clutch Crank
#8- PBB2002RSC	10-32 x 1/4" Screw (2)
#9- PBB2011	Clutch Support Bracket
#10- PBB2011B	Bronze Bushing

#12- PBB2013SW	#1/4 Internal Lock Washer (6)
#13- PBB2012CL	One Way Bearing
#14- PBB2012NS	New Style Gear Block
#15- PBB2013B	Bronze Bushing (3)
#16- PBB2006CL	3/8" Collar
#17- PBB2004SC	10-32 x 1/8" Screw (3)
#18- PBB2014	Gear Block Support Bracket
#19- PBB2013SC	1/4-20 x 1/2" Screw (1)
#20- PBB2013SCA	1/4-20 x 5/8" Screw (2)
#21- PBB2013SCB	1/4-20 x 3/4" Screw (3)

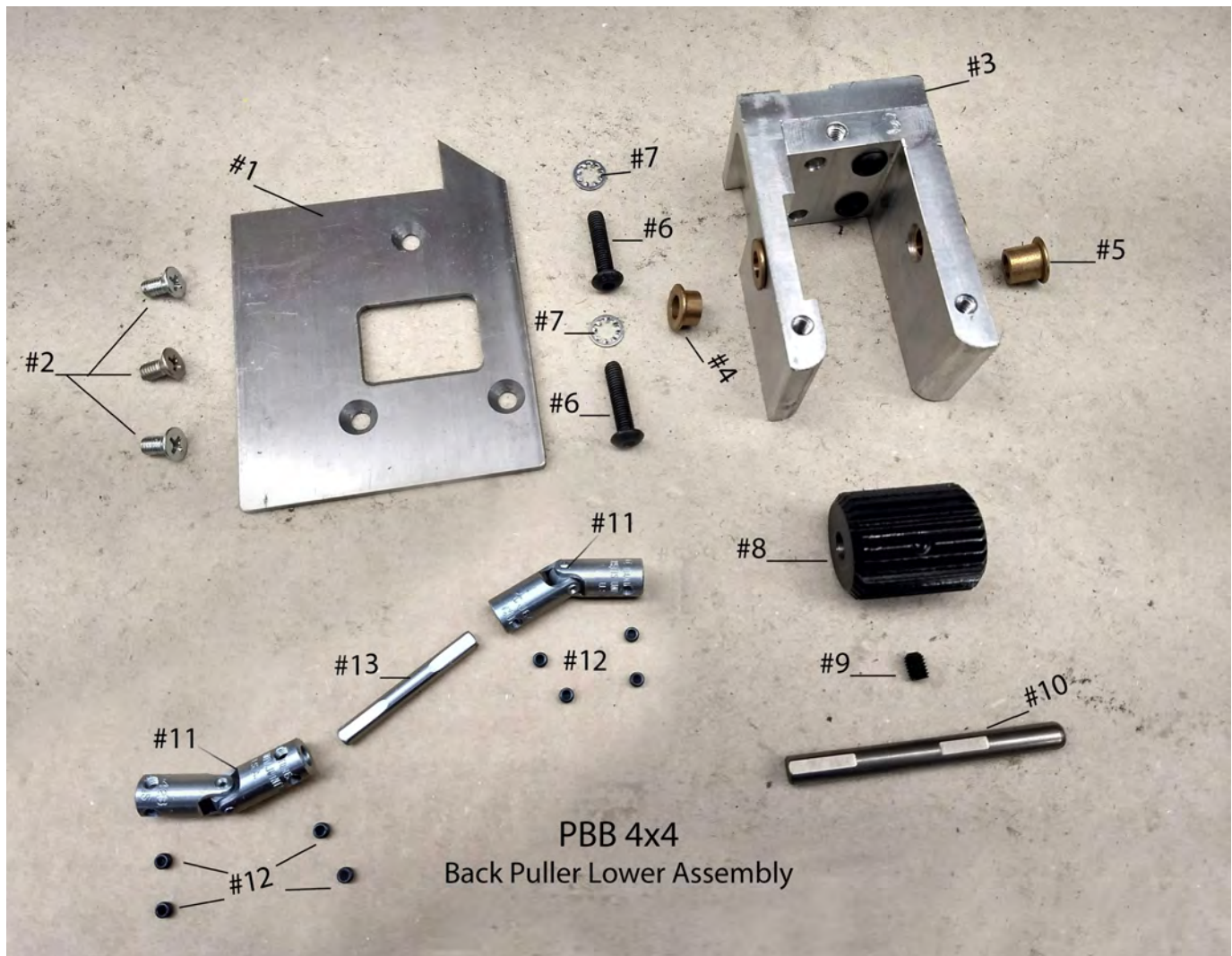
Note: There is no number #11.



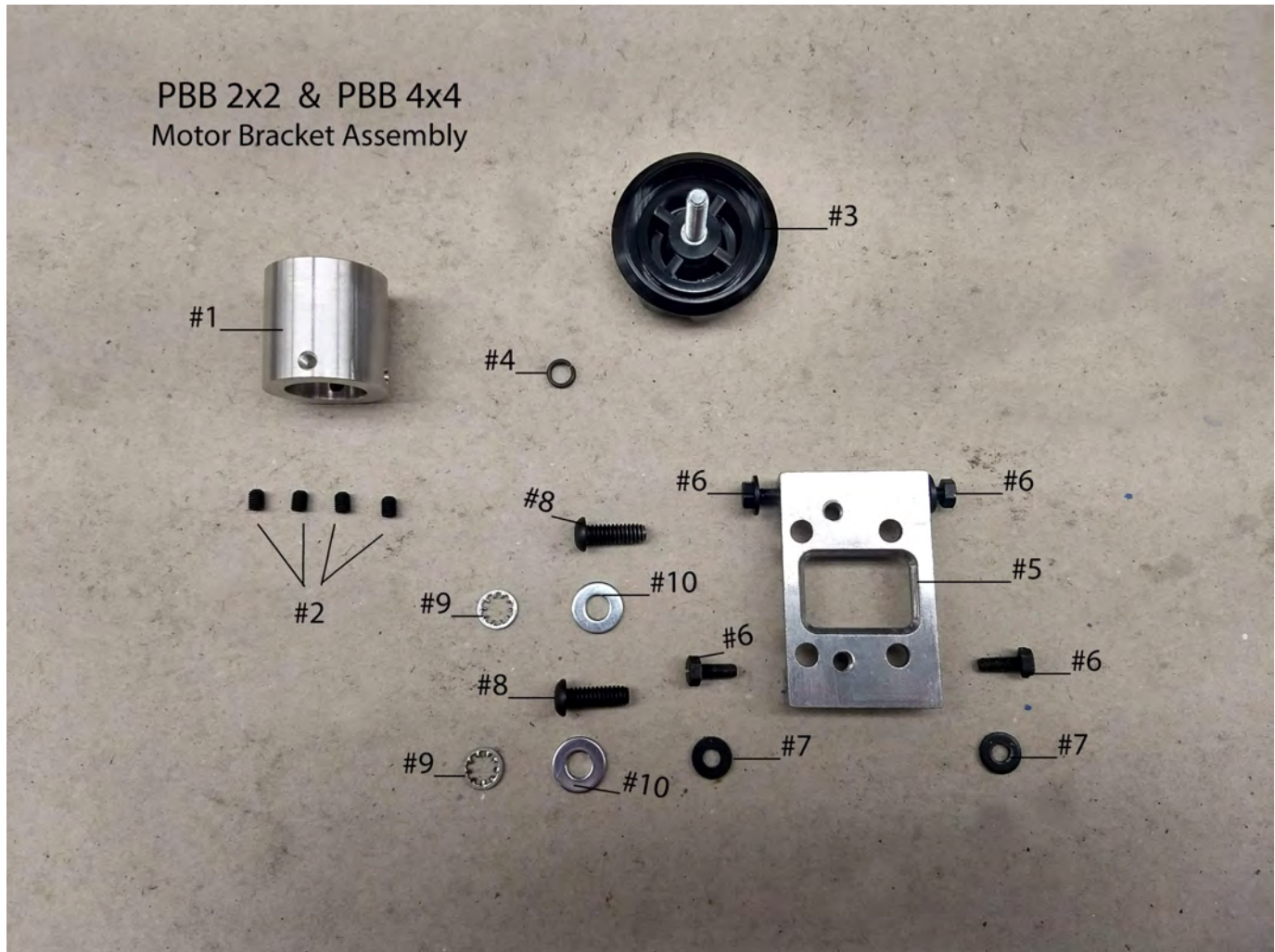
#1- PBB3001A/B	Back Puller Frame A & B	#10- PBB3002B	Lower Bearing
#2- PBB3001SC	1/4 x 20 x 3/4 Screw (2)	#11- PBB3002BSC	10-32 x 5/16" Screw
#3- PBB3002SC	10-32 x 1-1/2" Screw (2)	#12- PBB2001FY	Feed Roller Yoke, Rear
#4- PBB1007LW	#10 Internal Lock Washer (2)	#13- PBB2002R	Feed Roller, Rear
#5- PBB3003B	Adjusting Bushing, Upper	#14- PBB2002RSC	10-32 x 3/16" Screw (2)
#6- PBB3004	Compression Spring	#15- PBB2003S	Shaft
#7- PBB3006	Lifter Bracket	#16- PBB3005	Presser Bar, Rear
#8- PBB3006LSC	10-32 x 1/2" Long Screw (1)	#17- PBB4004	Rear Lifter Lever
#9- PBB3006SC	10-32 x 3/8" Short Screw (1)	#18- PBB2002SCL	10-32 x 1/2" Screw



#1- PBB4001	Front / Rear Lifting Lever
#2- PBB4002K	Lifter Knob
#3- PBB2013SC	1/4-20 x 1/2" Screw
#4- PBB1007SC	10-32 X 3/4" Screw
#5- PBB4003LW	#10 Split Lock Washer (2)
#6- PBB1007LN	10-32 Lock Nut
#7- PBB4004	Rear Lifter Lever
#8- PBB1003SCB	10-32 x 1/2" Screw
#9- PBB4008	Lifter Block
#10- PBB2002RSC	10-32 x 1/4" Screw
#11- PBB4007SC	10-32 x 1" Screw (2)
#12- PBB1007LW	#10 Internal Lock Washer (2)



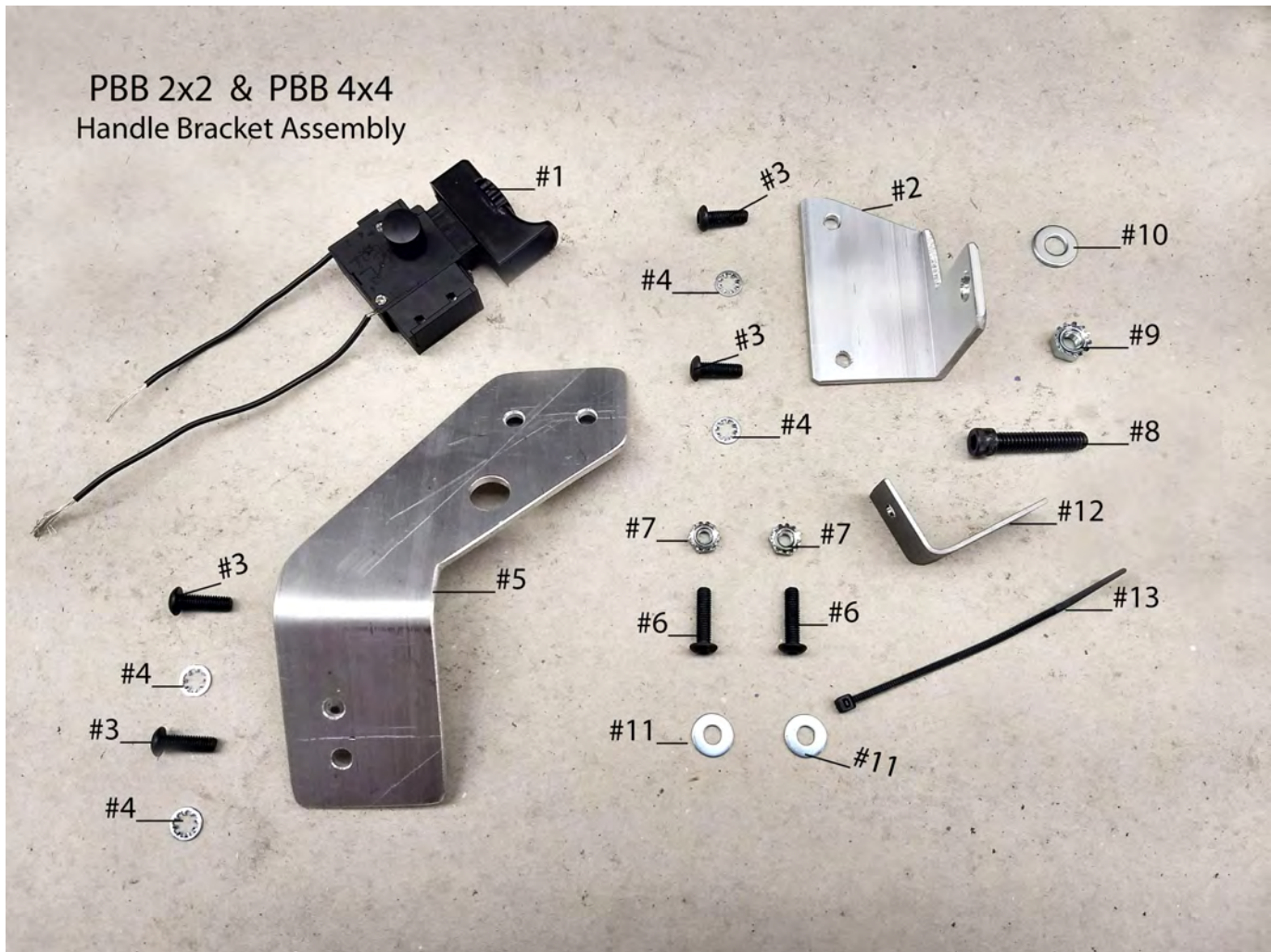
- | | |
|----------------|------------------------------|
| #1- PBB5001 | Rear Puller Plate |
| #2- PBB5002SC | 10-32 x 3/8" Screw (3) |
| #3- PBB5003 | Feed Roller Yoke A & B |
| #4- PBB5003BF | Bronze Bearing, Short |
| #5- PBB5003BL | Bronze Bearing, Long |
| #6- PBB4007SC | 10-32 x 1" Screw (2) |
| #7- PBB1007LW | #10 Internal Lock Washer (2) |
| #8- PBB2002R | Feed Roller Rear |
| #9- PBB2002RSC | 10-32 x 1/4" Screw |
| #10- PBB2003S | Shaft |
| #11- PBB2004B | Universal Joint (2) |
| #12- PBB2004SC | 10-32 x 1/8" Screw (8) |
| #13- PBB2005S | Shaft |



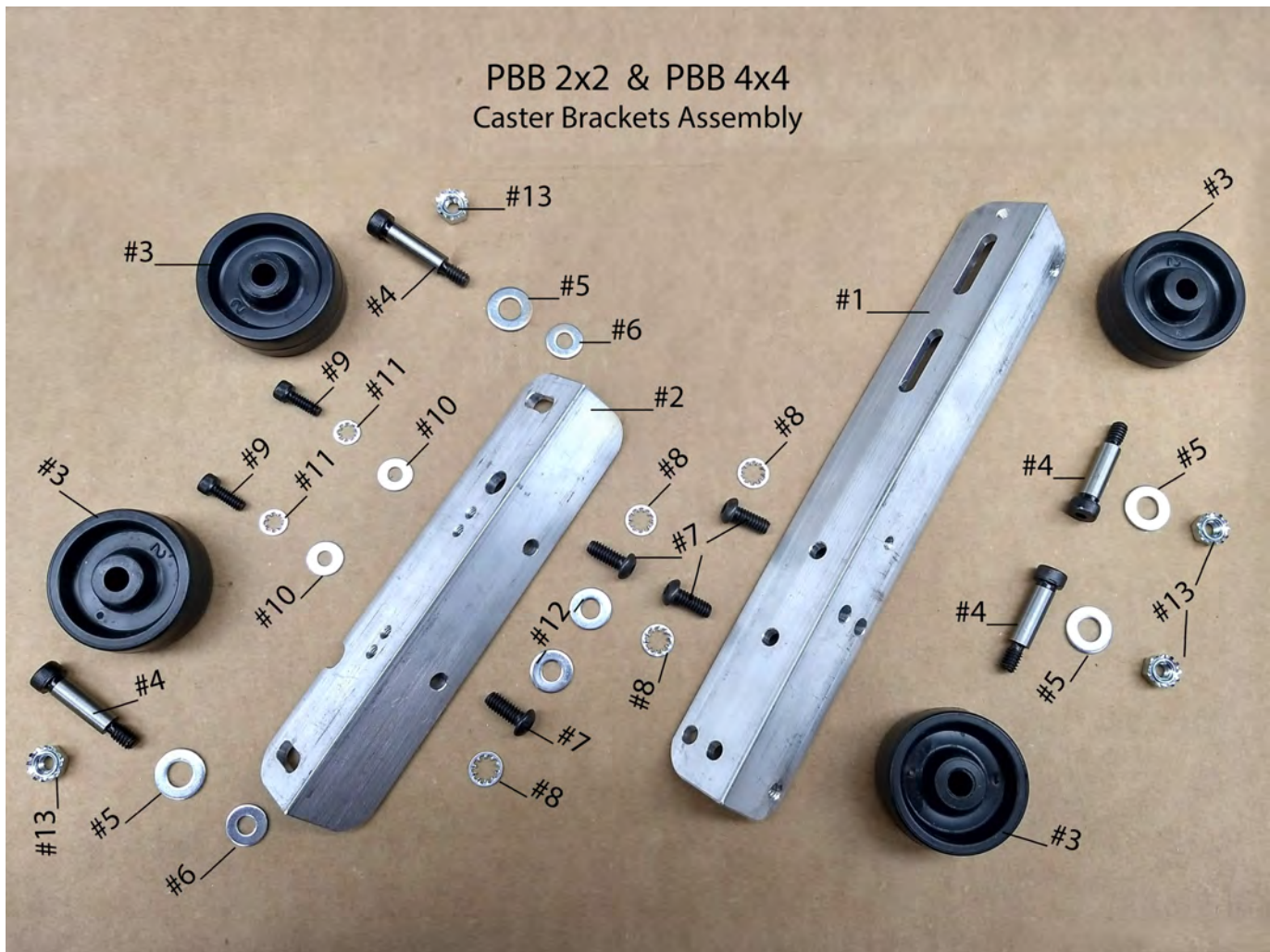
- | | |
|--------------------|-------------------------------|
| #1- PBB1008 | Handwheel Shaft |
| #2- PBB1008SC | 10-32 x 1/4" Screw (4) |
| #3- PBB1008HW | Hand Wheel |
| #4- PBB1003LW | 1/4 Split Lock Washer |
| #5- PBB241072 | Motor Base |
| #6- PBB11/64S40075 | Screw (4) |
| #7- PBB11/64W10101 | Washer (4) |
| #8- PBB2013SCB | 1/4-20 x 3/4" Screw (2) |
| #9- PBB2013SW | #1/4 Internal Lock Washer (2) |
| #10- PBB1003W | #1/4 Washer (2) |



#1- PBB7001	Thread Base Plate w/ Block
#2- PBB7001SC	10-32 x 1/2" Screw (4)
#3- PBB1007LN	10-32 Lock Nut (1)
#4- PBB7003	Thread Hold Down Rod (2)
#5- PBB7004	Hold Down Knob (2)
#6- PBB7006R	Thread Guide Rod
#7- PBB7006G	Thread Guide Rod Ring
#8- PBB7010	Gear Cover
#9- PBB7010SC	6-32 Screw (1)
#10- PBB7010W	#6 Washer (1)
#11- PBB7007	L - Bracket
#12- PBB2013SCA	1/4-20 x 5/8" Screw (2)
#13- PBB2013SW	#1/4 Internal Lock Washer (2)
#14- PBB7006SC	Thumb Screw
#15- PBB8008N	1/4-20 Lock Nut



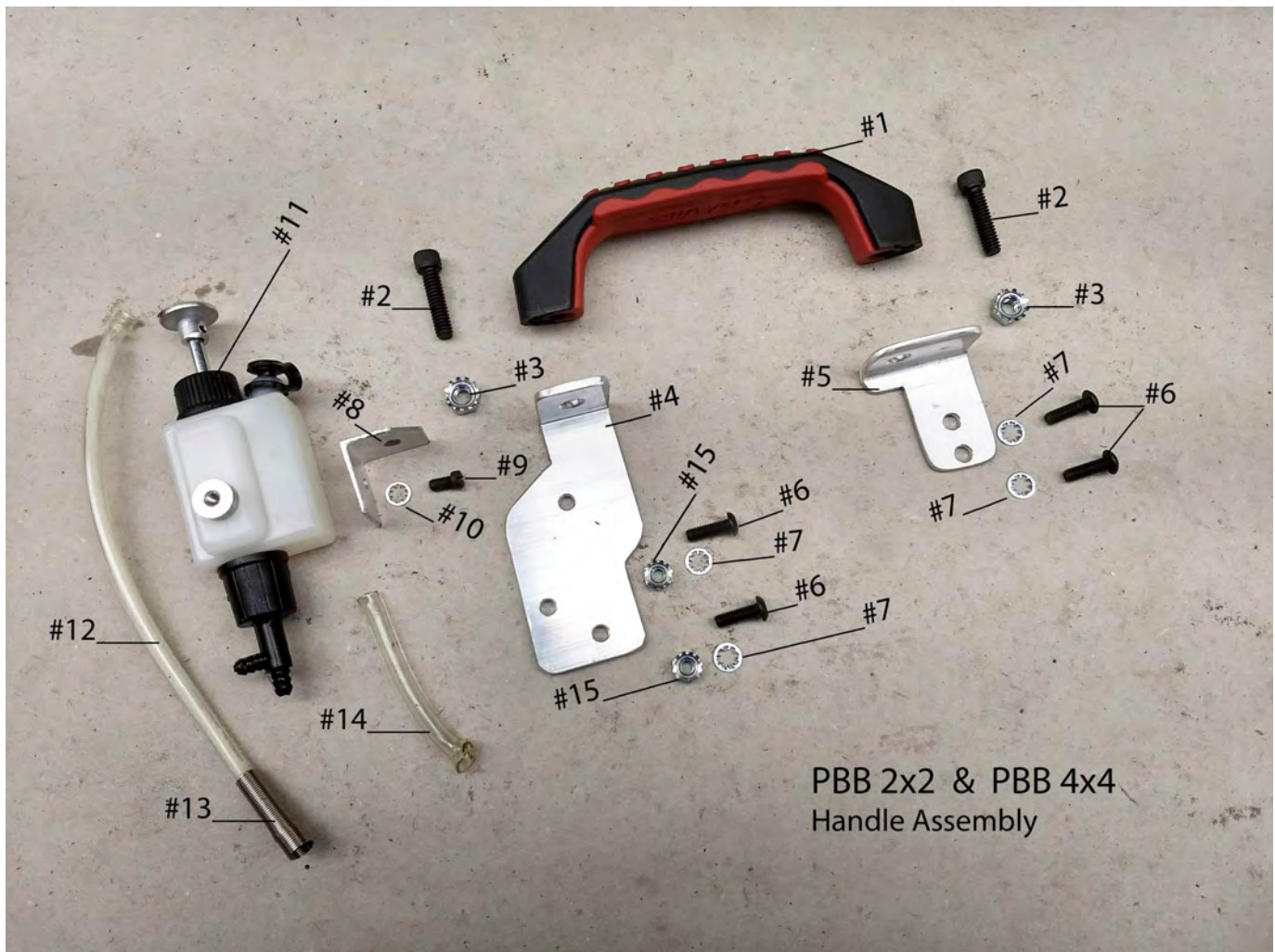
- | | |
|----------------|--------------------------|
| #1- PBBC02001 | Trigger Lock Switch |
| #2- PBB8009 | Upper Handle Bracket |
| #3- PBB1003SCB | 10-32 x 1/2" Screw (4) |
| #4- PBB1007LW | Internal Lock Washer (4) |
| #5- PBB8001 | Lower Handle Bracket |
| #6- PBB8006SC | 10-32 x 5/8" Screw (2) |
| #7- PBB1007LN | 10-32 Lock Nut (2) |
| #8- PBB8007SC | 1/4-20 x 1-1/4" Bolt (1) |
| #9- PBB8008N | 1/4-20 Lock Nut |
| #10- PBB8007W | #1/4 Washer |
| #11- PBB8012 | #10 Washer (2) |
| #12- PBB17005 | Light Bracket |
| #13- PBB17006 | 4" Wire Tie |



- | | |
|----------------|---------------------------------|
| #1- PBB9001 | Caster Bracket, Right Side |
| #2- PBB9002 | Caster Bracket, Left Side |
| #3- PBB9003 | 2" Casters (4) |
| #4- PBB9004 | Axle (4) |
| #5- PBB9007W | #5/16 Washer (4) |
| #6- PBB9008W | #12 Washer (2) |
| #7- PBB2013SCA | 1/4-20 x 5/8" Screw (4) |
| #8- PBB2013SW | #1/4 Internal Lock Washer (4) |
| #9- PBB9009SC | 10-24 Cove Base Guide Screw (2) |
| #10- PBB8012 | #10 Washer (2) |
| #11- PBB1007LW | #10 Internal Lock Washer (2) |
| #12- PBB1003W | #1/4 Washer (2) |
| #13- PBB8008N | 1/4-20 Lock Nut (4) |

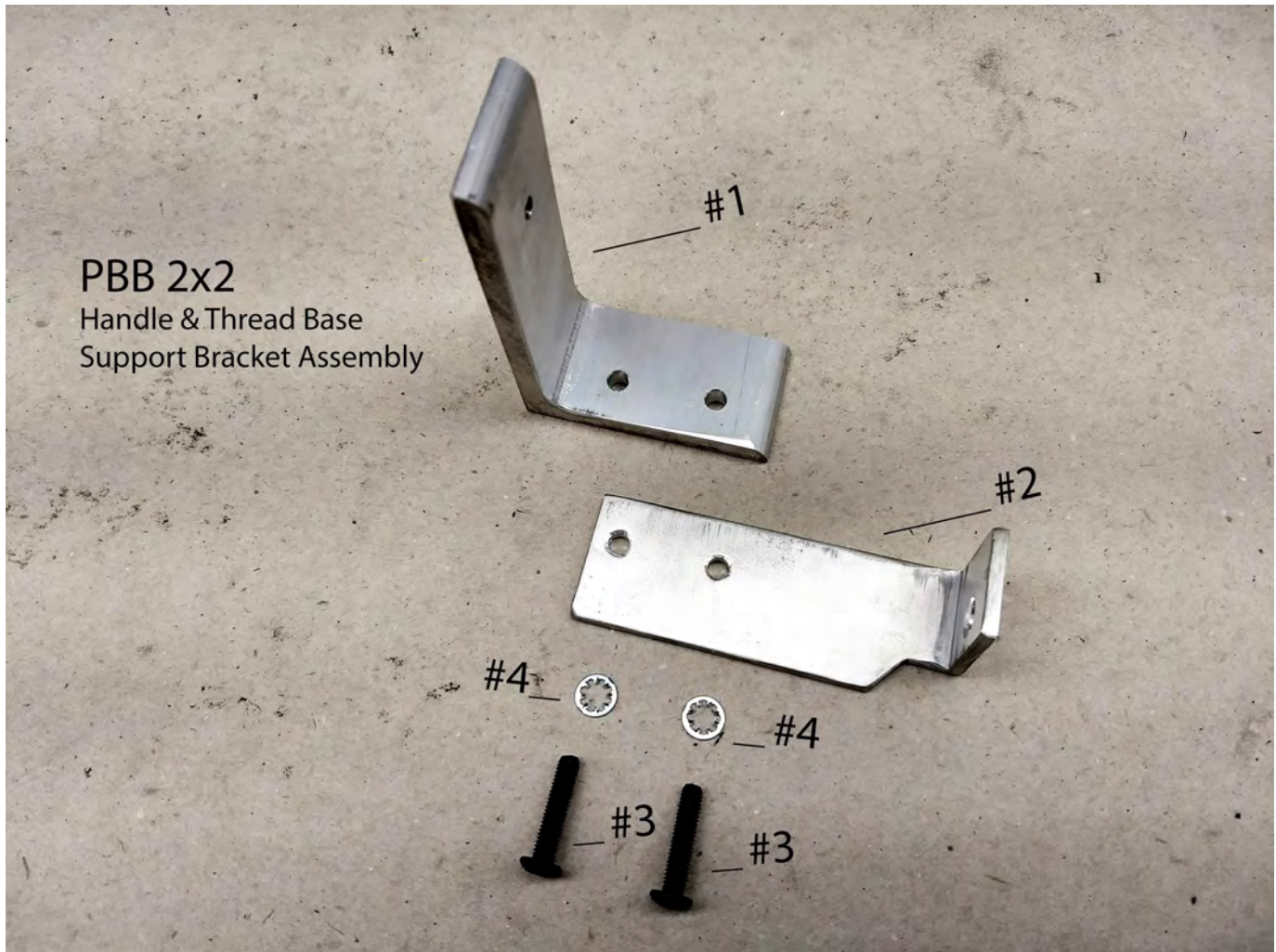


- | | |
|----------------|------------------------------|
| #1- PBB10001 | Belt Cover |
| #2- PBB10003 | Support Bracket, Top |
| #3- PBB10004 | Support Bracket, Lower |
| #4- PBB10006SC | 10-32 x 3/8" Screw (2) |
| #5- PBB1007LW | #10 Internal Lock Washer (2) |
| #6- PBB7010SC | 6-32 Screw (4) |
| #7- PBB7010W | #6 Washer (8) |

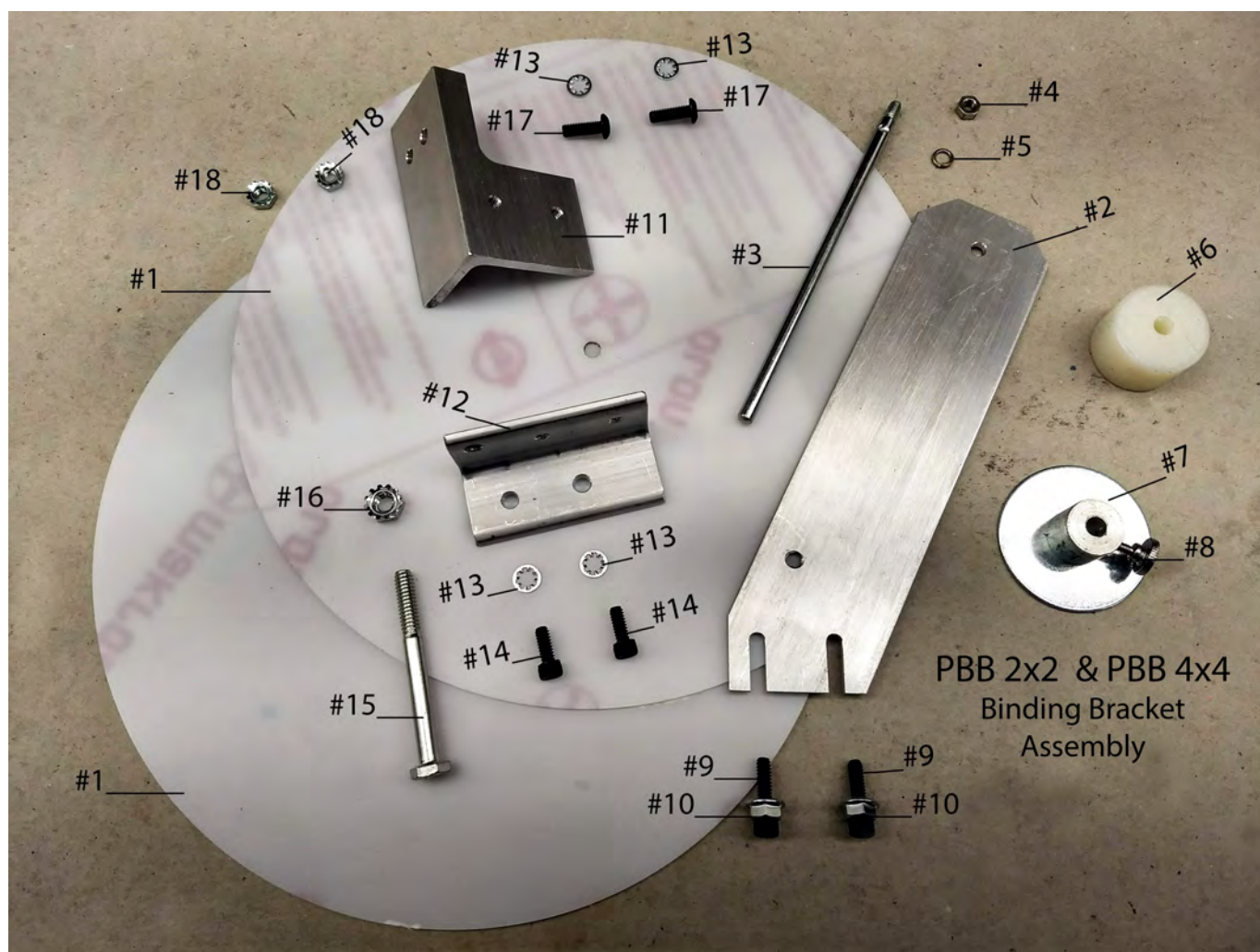


- #1- PBB11001
- #2- PBB11001S
- #3- PBB8008N
- #4- PBB11005
- #5- PBB11006
- #6- PBB1003SCB
- #7- PBB1007LW
- #8- PBB11003
- #9- PBB11/64S40049
- #10- PBB110011LW
- #11- PBB3201224
- #12- PBBOILER TUBE L
- #13- PBBOILER TUBE SPRING
- #14- PBBOILER TUBE S
- #15- PBB1007LN

- Carry Handle
- 1/4-20 x 1" Screw (2)
- 1/4-20 Lock Nut (2)
- Handle Bracket, Right
- Handle Bracket, Left
- 10-32 x 1/2" Screw (4)
- #10 Internal Lock Washer (4)
- Oiler Bracket
- Screw
- #8 Internal Lock Washer
- Oiler Pump
- Long Oil Tube
- Spring
- Short Oil Tube
- 10-32 Lock Nut (2)



- | | |
|---------------|------------------------------|
| #1- PBB7008B | Thread Base Support Bracket |
| #2- PBB7008 | Carry Handle Bracket |
| #3- PBB1007SC | 10-32 x 3/4" Screw (2) |
| #4- PBB1007LW | #10 Internal Lock Washer (2) |

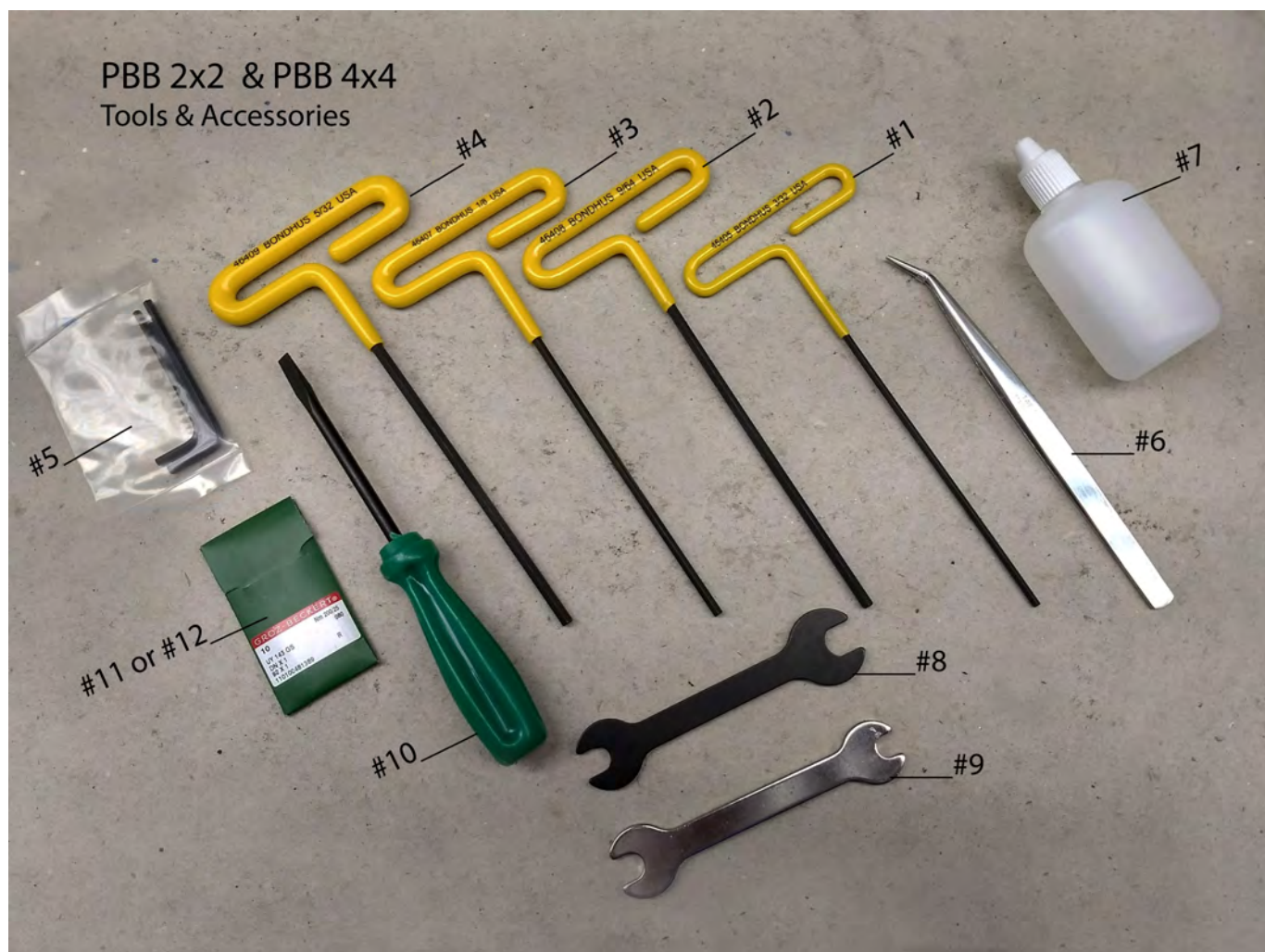


#1- PBB12001PD Binding Disc (2)
 #2- PBB12002 Binding Bracket
 #3- PBB12003 Binding Post, Long
 #4- PBB12003N Nut
 #5- PBB12003LW Lock Washer
 #6- PBB12004C Binding Core
 #7- PBB12005 Binding Rod Clamp
 #8- PBB12005SC Thumb Screw
 #9- PBB12007SC 10-24 x 7/8" Screw (2)

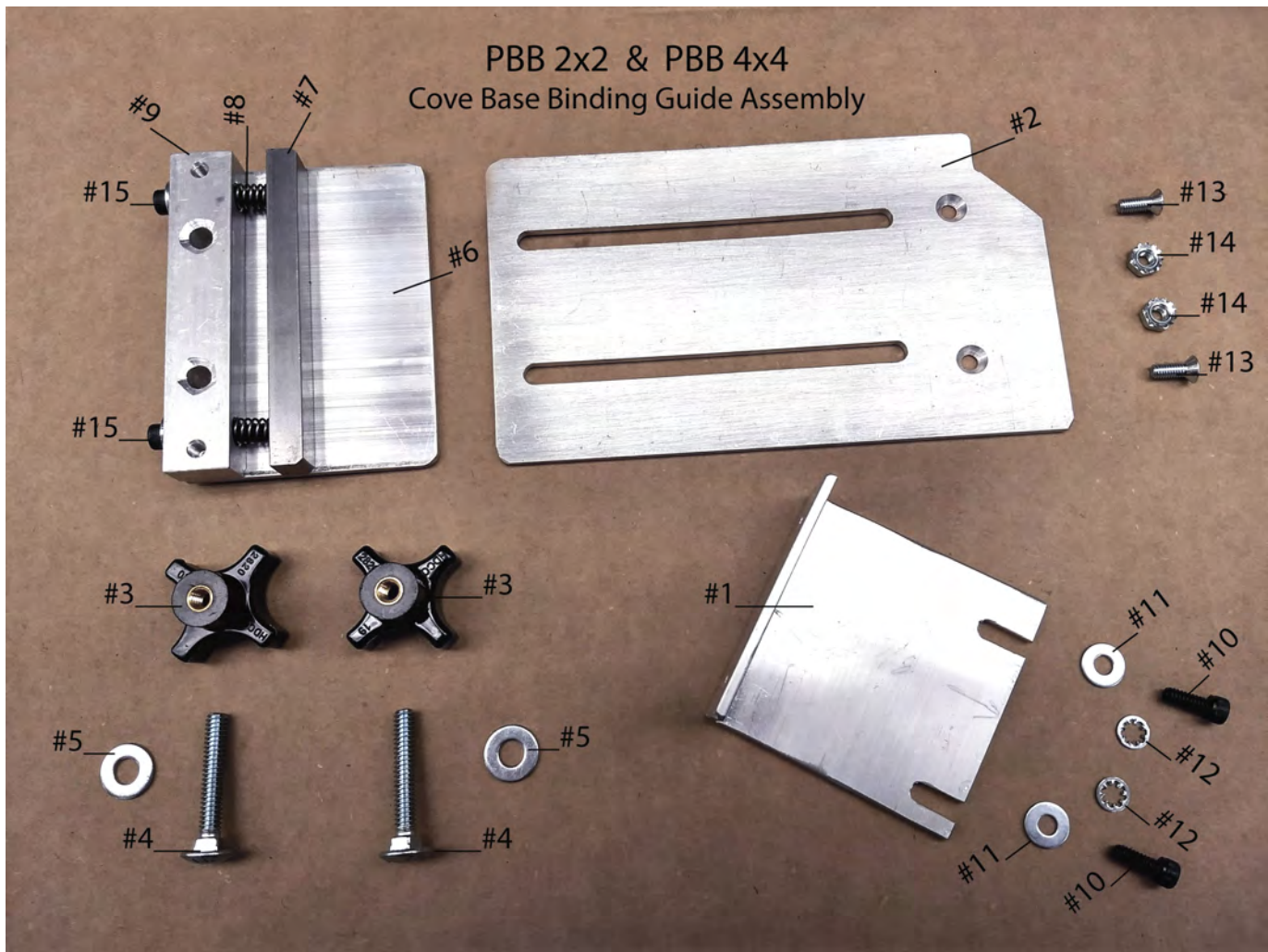
#10- PBB12007N 10-24 Lock Nut (2)
 #11- PBB12004 Binding Bracket
 #12- PBB12008BKT Upright Bracket
 #13- PBB1007LW 10-32 Internal Lock Washer (4)
 #14- PBB9009SC 10-24 x 1/2" Screw (2)
 #15- PBB12009BP Binding Guide Post, Short
 #16- PBB8008N 1/4-20 Lock Nut
 #17- PBB8006SC 10-32 x 5/8" Screw (2)
 #18- PBB1007LN 10-32 Lock Nut (2)



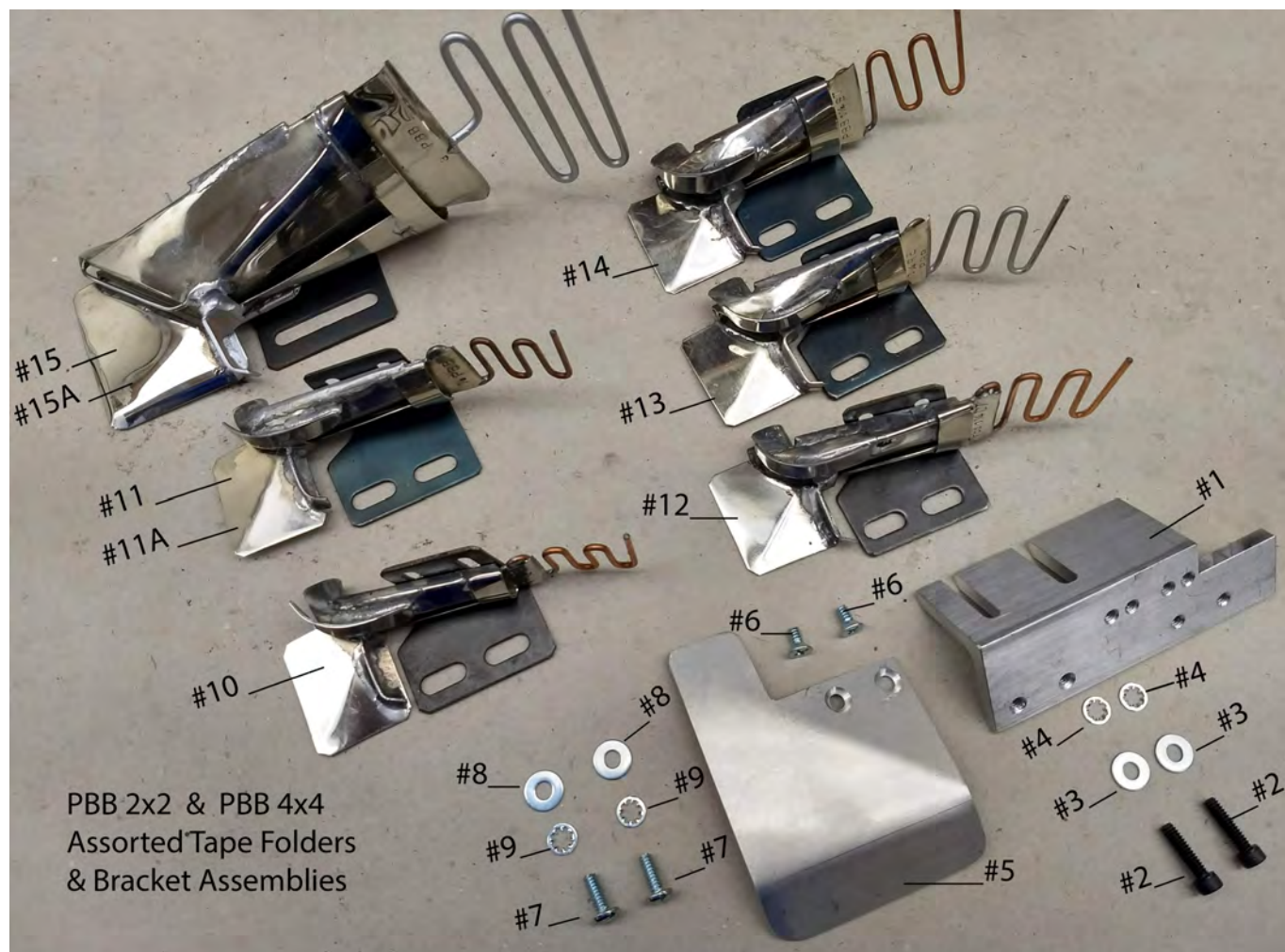
- | | | |
|-----|----------|---|
| #1- | 08017 | #75 Clear Monofilament .012 Thread with Canister Top for Needle |
| #2- | 08065-79 | #69 Bonded Nylon Tex 70 16 oz spools, various colors |
| #3- | 09011-14 | 12/4 Glazed Cotton Thread 16 oz spools, four colors |
| #4- | PBB SOCK | Thread Spool Sock 5 pack |



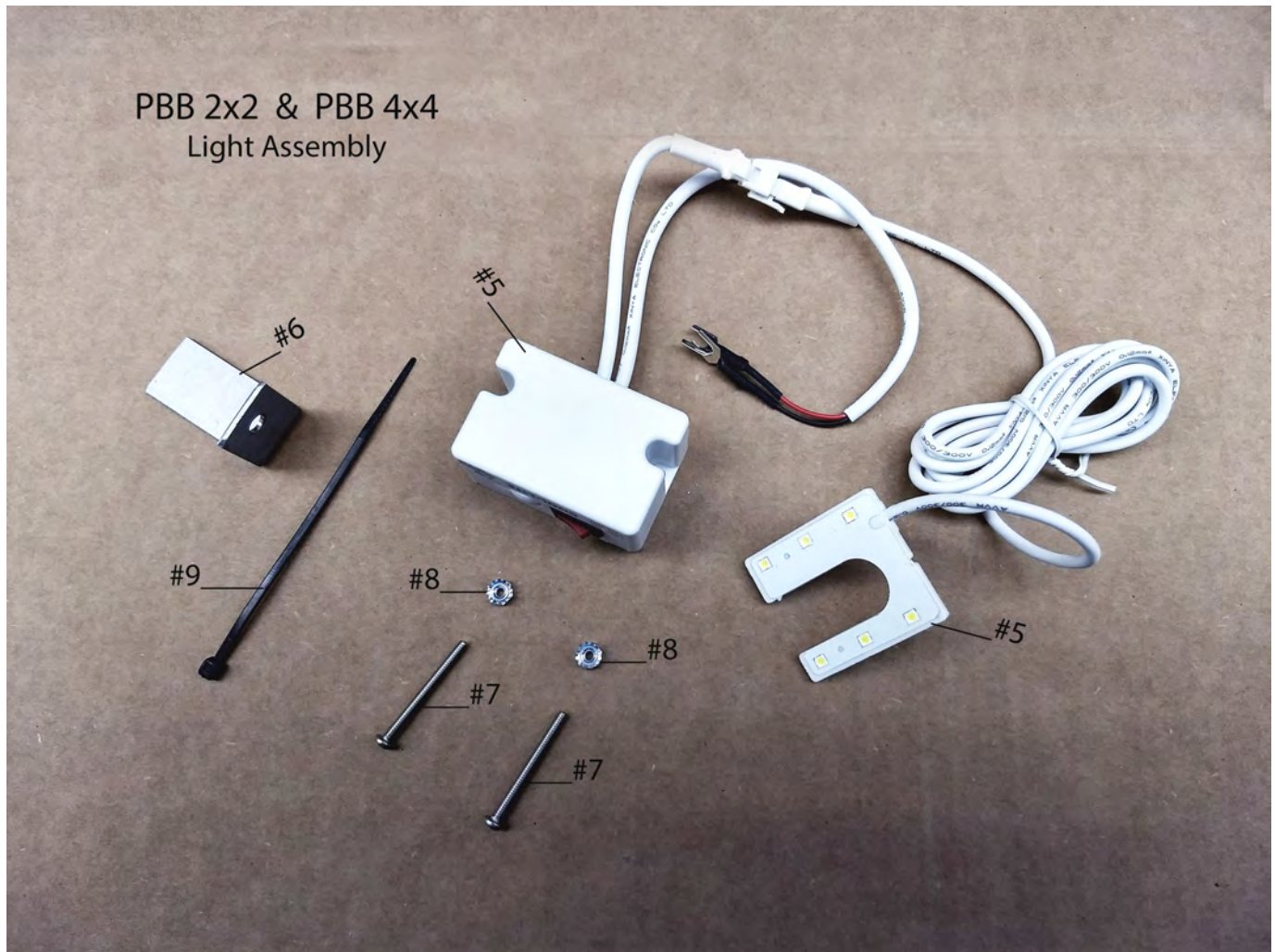
- | | |
|---------------|--------------------------------------|
| #1- PBB14002 | 3/32 T-Bar Allen Wrench |
| #2- PBB14004 | 9/64 T-Bar Allen Wrench |
| #3- PBB14009 | 1/8 T-Bar Allen Wrench |
| #4- PBB14001 | 5/32 T-Bar Allen Wrench |
| #5- PBB14003 | Set of Allen Wrenches: 2, 2.5 & 3 mm |
| #6- PBB14008 | Tweezers |
| #7- PBB14010 | Oiler |
| #8- PBB14007 | Open End Wrench 8 mm - 3/8" Combo |
| #9- PBB14005 | Open End Wrench 7 mm - 8 mm Combo |
| #10- PBB14006 | Screw Driver |
| #11- 21025 | #25 UY143GS Needles pack of 10 |
| #12- 21025BOX | #25 UY143GS Needles box of 100 |



- | | |
|------------------|------------------------------|
| #1- PBB15001 | Angled Bracket |
| #2- PBB15007GP | Lower Plate |
| #3- PBB15003 | Adjusting Knobs (2) |
| #4- PBB15004 | Carriage Bolts (2) |
| #5- PBB1003W | #1/4 Washer (2) |
| #6- PBB15005P | Upper Plate |
| #7- PBB15007SLS | Spring Loaded Stop Guide |
| #8- PBB15007SP | Compression Spring (2) |
| #9- PBB15007SG | Cove Base Stop Guide |
| #10- PBB9009SC | 10-24 x 1/2" Screw (2) |
| #11- PBB8012 | #10 Washer (2) |
| #12- PBB15002LW | #10 Internal Lock Washer (2) |
| #13- PBB7001SC | 10-32 x 1/2" Screw (2) |
| #14- PBB1007LN | 10-32 Lock Nut (2) |
| #15- PBB3002SC | 10-32 x 1-1/2" Screw (2) |
| #16- PBB15-707BA | Complete Cove Base Guide |



- | | |
|-------------------|--|
| #1- PBB16001 | Assorted Tape Folder Bracket |
| #2-PBB12007SC | 10-24 x 7/8" Screw (2) |
| #3- PBB8012W | #10 Washer (2) |
| #4- PBB1007LW | #10 Internal Lock Washer (2) |
| #5- PBB16002 | Carpet Glide Plate |
| #6-PBB16002SC | 10-24 x 3/8" Screw (2) |
| #7-PBB16003SC | 10-24 x 1/2" Screw (2) |
| #8- PBB8012 | #10 Washer (2) |
| #9- PBB1007LW | #10 Internal Lock Washer |
| #10- PBB16-707WM | 13/16" Tape Folder Attachment |
| #11- PBB16-707KP | 7/8" Tape Folder Attachment |
| #11A- PBB16-707S | 7/8" Serge Tape Folder Attachment |
| #12- PBB16-777CT | 1-1/4" Clean Top Folder Attachment |
| #13- PBB16-777RE | 1-1/4" Raw Edge Tape Folder Attachment (Single Turn) |
| #14- PBB16-777STS | 1-1/4" Serge Tape Folder Attachment |
| #15- PBB16-778SF | 3" Sisal Cotton Tape Folder Attachment |
| #15A- PBB16-778CT | 3" Clean Top Sisal Cotton Tape Folder Attachment |



- | | |
|-----------------|------------------------------|
| #1- PBB17001 | Old Style Light Assembly |
| #2- PBB17002 | Light Bulb |
| #3- PBB1007LW | #10 Internal Lock Washer (2) |
| #4- PBB17004 | 10S 4x12 Screw (2) |
| #5- PBB17001LED | New Style LED Light Assembly |
| #6- PBB17005 | Light Bracket |
| #7- PBB17008SC | 5-40 x 1-1/4" Screw (2) |
| #8- PBB17009LN | 5-40 Lock Nut (2) |
| #9- PBB17006 | 4" Wire Ties |





10 Reason\$ to Bind Carpet\$

10. “Gift” your customers with their own “scrap” rugs. Make a positive from a negative.
9. Laminate, hardwood & ceramic tile has been steadily eroding your carpet business.
8. Rugs don’t require installation but do require profitable pad type products.
7. Every hard surface floor will end up with rugs on them. “Double Dip” your sale
6. Hardwood stairs are everywhere and are LOUD.
Quiet your customers’ house and solve noise pollution in the home.
5. Fire places expel hot ashes. A rug is expendable – hardwood is not.
4. Designer rugs and runners sell well. Make these make you money.
3. Designer rugs create custom profits.
Design, fabricate & bind your own “one of a kind masterpiece”.
2. Carpet base is practical and used extensively in commercial work.

AND THE NUMBER 1 REASON IS:

It’s the most profitable thing your warehouse person, installer, etc.
can do for your business.

The return percentage can’t be touched elsewhere
in the floor covering business!



Bond PBB 2x2 & 4x4 Tech Support

4511 Wayne Ave • Philadelphia PA 19144

Email: sales@bondproducts.com

Phone: 888-800-2663 (BOND)

Fax: 800-582-9643

Skipping Stitches

1. Needle worn, or put in backwards. Replace needle or turn the needle the right way.
2. Using the wrong size clear thread. Should be #75 .012 in size.
3. Looper point worn or looper not close the the needle rear.
Must be re-timed. You would send back for some machine service.
4. Check threading. See manual / video on Website: www.bondproducts.com

Looper Thread Breaks

1. Thread rod above the spool is causing the looper thread to get snagged.
Adjust the thread rod and raise it higher

Clear Thread Breaks

1. Needle worn, replace the needle
2. Clear thread dome not flush with the thread spool base which causes the thread to get pinched at the top rim. Re-position the dome correctly.
3. Clear thread spool getting low. Replace it with a new spool.
4. Looper point has a burr that causes the clear thread to rub against the burr, which weakens and breaks the thread.
5. Polish the throat plate (needle hole).



4511 Wayne Ave
Philadelphia, PA 19144
Ph: 888-800-2663
Fx: 800-582-9643
www.bondproducts.com
Exclusive manufacturer of Instabind.



Thank you for taking time to read our PBB manual.



Bond's Portable Bobbinless Binder