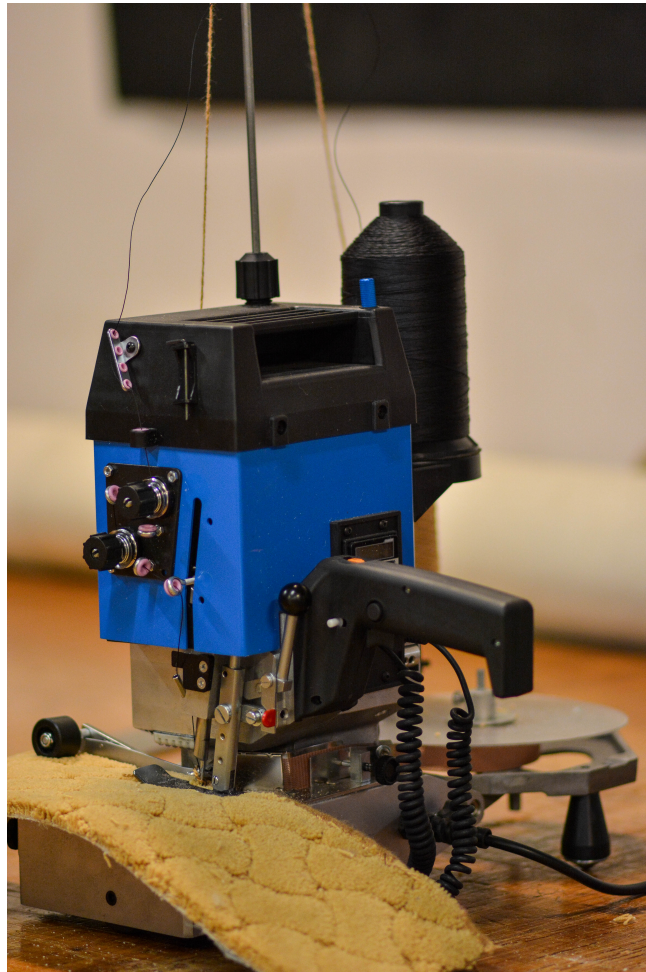




## Bond Alpha Mini Portable Serger Manual



Bond Products, Inc.  
4511 Wayne Ave  
Philadelphia, Pa 19144  
Phone: 888-800-2663  
Fax: 800-582-9643  
[www.bondproducts.com](http://www.bondproducts.com)



# **TABLE OF CONTENTS**

▪ Table of Contents .....	2
▪ Rules for Safe Operation .....	3-6
▪ Grounding .....	5
▪ Extension Cords .....	6
▪ Introduction .....	7
▪ Procedures .....	8-15
A. Preparing the Machine.....	8
B. Hand Grip Extension Handle.....	8
C. Base Guide Attachment.....	9
D. Table Mounting.....	9
E. Threading the Thread.....	10
F. Threading the Yarn.....	11
G. Threading the Edging Tape.....	12
H. Switch Panel.....	13
I. Preparing for Work.....	13
J. Proceeding to Over Lock the Carpet.....	14
K. Checking of the Stitch Quality .....	14
L. Operation of Pressure Foot.....	14
M.Over Locking of Carpet Strips.....	15
N. Stitch Spacing.....	15
O. Changing the Sewing Needle.....	16
P. Recommendations.....	16
▪ Lubrication.....	17
▪ Troubleshooting .....	18
▪ Circuit Board.....	19
▪ Complete Parts List .....	20-22
▪ Part Numbers and Diagrams .....	23-30
▪ Labels.....	31
▪ Guarantee .....	32
▪ Return Sheet.....	Last Page

# **RULES FOR SAFE OPERATION**

READ AND SAVE ALL INSTRUCTIONS FOR FUTURE USE. Before use, be sure everyone operating this equipment reads and understands this manual as well as any labels packaged with or attached to the tool.

1. **KNOW YOUR EQUIPMENT:** Read this manual carefully to learn equipment applications and limitations as well as potential hazards associated with this type of equipment.
2. **GROUND YOUR TOOL:** Unless your tool is double insulated, it should be grounded. *See Grounding.*
3. **AVOID DANGEROUS ENVIRONMENTS:** Do not use in rain, damp or wet locations, or in the presence of explosive atmospheres (gaseous fumes, dust or flammable materials). Remove materials or debris that may be ignited by sparks.
4. **KEEP WORK AREA CLEAN AND WELL LIT:** Cluttered, dark work areas invite accidents.
5. **DRESS PROPERLY:** Do not wear loose clothing. These may be caught in moving parts. When working outdoors, wear rubber gloves and insulated non-skid footwear. Keep hands and gloves away from moving parts.
6. **USE SAFETY EQUIPMENT:** Everyone in the work area should wear safety goggles or glasses complying with current safety standards. Wear hearing protection during extended use and a dust mask for dusty operations. Hard hats, face shields, safety shoes, etc. should be worn when specified or necessary.
7. **KEEP BYSTANDERS AWAY:** Children and bystanders should be kept at a safe distance from the work area to avoid distracting the operator and contacting the tool or extension cord. Operator should be aware of who is around them and their proximity.
8. **PROTECT OTHERS IN THE WORK AREA:** Provide barriers or shields as needed to protect others from debris.
9. **USE PROPER ACCESSORIES:** Using accessories that are not recommended may be hazardous. Be sure accessories are properly installed and maintained. Do not delete a guard or other safety device when installing an accessory or attachment.
10. **CHECK FOR DAMAGED PARTS:** Inspect guards and other parts before use. Check for misalignment, binding of moving parts, improper mounting, broken parts and any other conditions that may affect operation. If abnormal noise or vibration occurs, turn the tool off immediately and have the problem corrected before further use. Do not use damaged equipment. Tag damaged tools "DO NOT USE" until repaired. A guard or other damaged parts should be properly repaired or replaced. For all repairs, insist on only identical National replacement parts.
11. **REMOVE ALL ADJUSTING KEYS AND WRENCHES:** Make a habit of checking that the adjusting keys, wrenches, etc. are removed from the tool before turning it on.
12. **GUARD AGAINST ELECTRIC SHOCK:** Prevent body contact with grounded surfaces such as pipes, radiators, ranges and refrigerators.
13. **AVOID ACCIDENTAL STARTING:** Be sure equipment is turned off before plugging it in. Do not use a tool if the power switch does not turn the tool on and off.
14. **DO NOT FORCE EQUIPMENT:** Equipment will perform best at the rate for which it was designed. Excessive force only causes operator fatigue, increased wear and reduced control.
15. **KEEP HANDS AWAY FROM ALL MOVING PARTS.**

# **RULES FOR SAFE OPERATION**

16. **DO NOT ABUSE CORD:** Never unplug by yanking the cord from the outlet. Pull plug rather than cord to reduce the risk of damage. Keep the cord away from heat, oil, sharp objects, cutting edges and moving parts.
17. **STAY ALERT:** Watch what you are doing, and use common sense. Do not use when you are tired, distracted or under the influence of drugs, alcohol or any medication causing decreased control.
18. **STARTING MACHINE:** On/off switch must be in off position before connecting to power source.
19. **UNPLUG EQUIPMENT:** When it is not in use, unplug tool before changing accessories or performing recommended maintenance.
20. **STORE IDLE EQUIPMENT:** When not in use, store in a dry, secured place. Keep away from children.
21. **MAINTAIN LABELS AND NAMEPLATES:** These carry important information. If unreadable or missing, contact National for a free replacement.
22. **MACHINE IS HEAVY, DO NOT DROP.**
23. **SURGE PROTECTOR:** Always use a surge protector when operating the machine.

# **RULES FOR SAFE OPERATION**

## **GROUNDING**



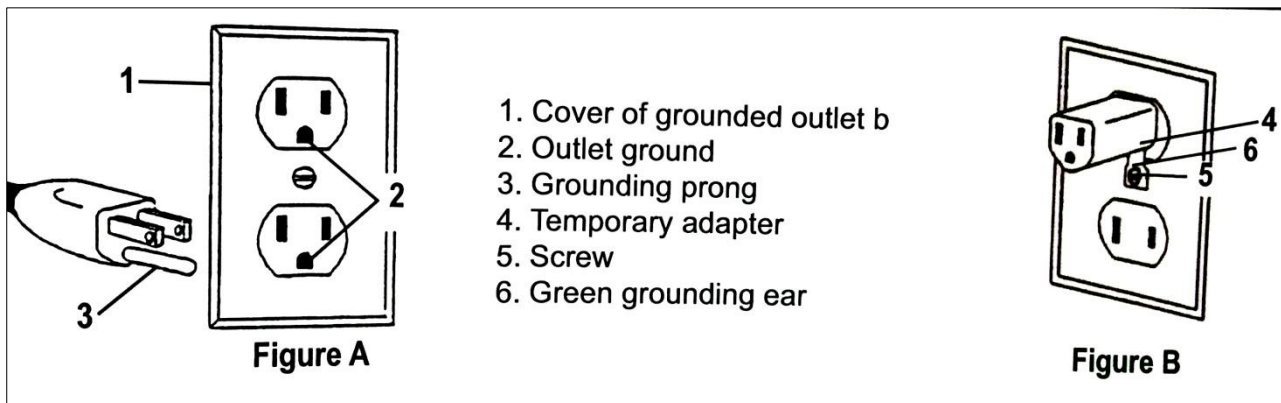
**WARNING:** Use a surge protector when operating the machine.



**WARNING:** Improperly connecting the grounding wire can result in the risk of electric shock. Check with a qualified electrician if you are in doubt as to whether the outlet is properly grounded. Do not modify the plug provided with the tool. Never remove the grounding prong from the plug. Do not use the tool if the cord or plug is damaged. If the plug will not fit the outlet, have a proper outlet installed by a qualified electrician.



**WARNING:** Electrical cords can be hazardous. Misuse can result in fire or death by electrical shock. Read carefully and follow all directions.



## **GROUNDING TOOLS: TOOLS WITH THREE PRONG PLUGS**

Tools marked “Grounding Required” have a three wire cord and three prong grounding plug. The plug must be connected to a properly grounded outlet (See Figure A). If the tool should electrically malfunction or break down, grounding provides a low resistance path to carry electricity away from the user, reducing the risk of electric shock.

The grounding prong in the plug is connected through the green wire inside the cord to the grounding system in the tool. The green wire in the cord must be the only wire connected to the tool's grounding system and must never be attached to an electrically “live” terminal.

Your tool must be plugged into an appropriate outlet, properly installed and grounded in accordance with all codes and ordinances. The plug and outlet should look like those in **Figure A**.

**Figure B** illustrates a temporary adapter available for connecting grounded plugs (Figure A) to two prong outlets. The green rigid ear or lug extending from the adapter must be connected to a permanent ground such as a properly grounded outlet box or receptacle. Simply remove the center screw from the outlet, insert the adapter and reattach the screw through the green grounding ear to the outlet. If in doubt of proper grounding, call a qualified electrician. A temporary adapter should only be used until a properly grounded outlet can be installed by a qualified electrician. The Canadian Electrical Code prohibits the use of temporary adapters.

# **RULES FOR SAFE OPERATION**

## **EXTENSION CORDS**




**WARNING:** Electrical cords can be hazardous. Misuse can result in fire or death by electrical shock. Read carefully and follow all directions.

Grounded tools require a three wire extension cord. Double insulated tools can use either a two or three wire extension cord. As the distance from the supply outlet increases, you must use a heavier gauge extension cord. Using extension cords with inadequately sized wire causes a serious drop in voltage, resulting in loss of power and possible tool damage.

The smaller the gauge number of the wire, the greater the capacity of the cord. For example, a 14 gauge cord can carry a higher current than a 16 gauge cord. When using more than one extension cord to make up the total length, be sure each cord contains at least the minimum wire size required. If you are using one extension cord for more than one tool, add the nameplate amperes and use the sum to determine the required minimum wire size.

### **GUIDELINES FOR USING EXTENSION CORDS**

- Use an electric surge protector to protect the PCB circuit board.
- If you are using an extension cord outdoors, make sure it is marked with the suffix “W-A” (“W” in Canada) to indicate that it is acceptable for outdoor use.
- Be sure your extension cord is properly wired and in good electrical condition. Always replace a damaged extension cord or have it repaired by a qualified person before using it.
- Protect your extension cords from sharp objects, excessive heat and damp or wet areas.
- Keep away from water. Do not use if wet. 
- Inspect thoroughly before each use. **DO NOT USE IF DAMAGED.**
- Make sure equipment is OFF before connecting cord outlet.
- FULLY INSERT plug into outlet.
- Do not remove, bend or modify any metal prongs or pins of cord.
- Do not use excessive force to make connections.
- Do not connect a three prong plug to a two-hole cord.
- Avoid overheating. Uncoil cord and do not cover it with any material.
- Do not walk on cord.
- Do not drive, drag or place objects over cord.

**READ AND SAVE ALL INSTRUCTIONS FOR FUTURE REFERENCE.**

# **INTRODUCTION**

**NOTE:** Be aware of the many useful features of your new machine. The Porta Serge uses an over locking stitch system. It also features a digital throughput meter that registers the volume of work the machine carries out. The pressure foot has an optional setting that allows the foot to automatically lift at corners. The Porta Serge is easy to use and portable for transporting to the job site. To get the most from your machine, observe the operating instructions provided. Inspect your machine when it arrives for damage during transit and ensure all accessories are included.

## **ACCESSORIES:**

- Handgrip with controller built in
- Needles (2)
- Screw clamp
- Allen key 3mm
- Needle Allen key 2.5mm
- Threader (inserted in chamber in top of machine housing and one spare)
- Bond spray lube
- Operating instruction manual

## **OPTIONAL ACCESSORY:**

- Handgrip/controller extension handle
- Foot control
- Work table
- Locating block for bench mounting
- Sample card of industrial yarn
- Scissor
- Looper
- Base Guide Attachment
- Surge Protector
- Needle Guide Cleaning Tool

# **PROCEDURES**

## **PREPARING THE MACHINE**

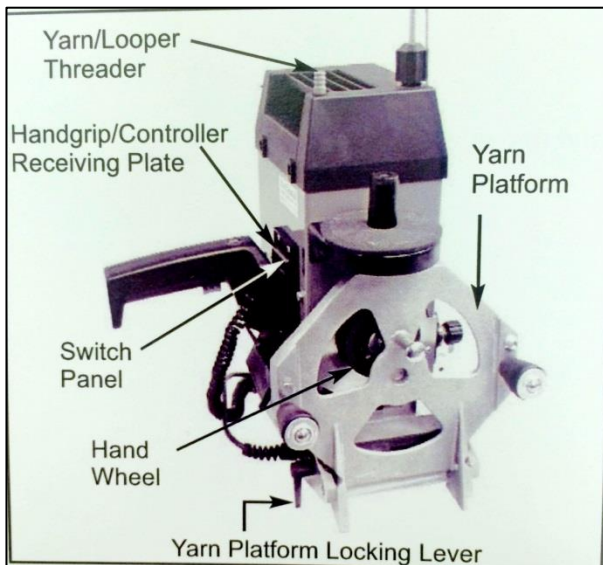
Refer to Figure 1. Take the machine out of the carrying case, pull the yarn platform locking lever upwards and unfold the yarn platform downward until it locks in the lowered position. Take the handgrip out of the accessories compartment in the carrying case and fit it onto the slotted receiving plate on the side of the machine housing next to the switch panel. Insert the DIN plug into the socket in the switch panel. Ensure the correct orientation of the plug.

## **HAND GRIP EXTENSION HANDLE**

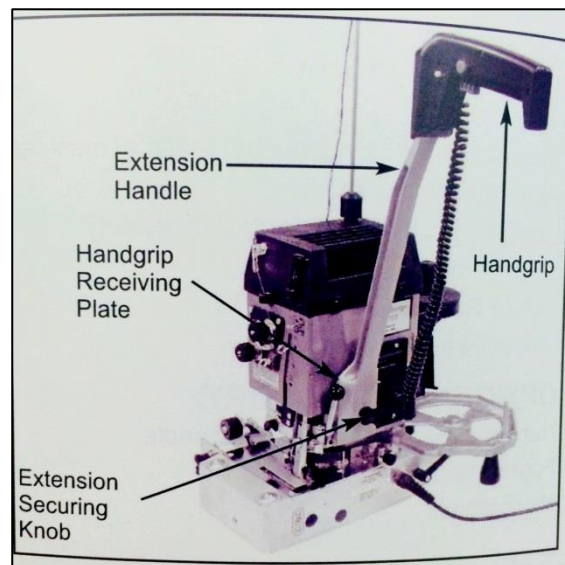
To use the hand grip extension handle, fit extension handle to the receiving plate first and then attach the handgrip to the top end of the extension handle (See Figure 2).

**NOTE:** The hand grip must lock into position.

**Figure 1**



**Figure 2**





# **PROCEDURES**

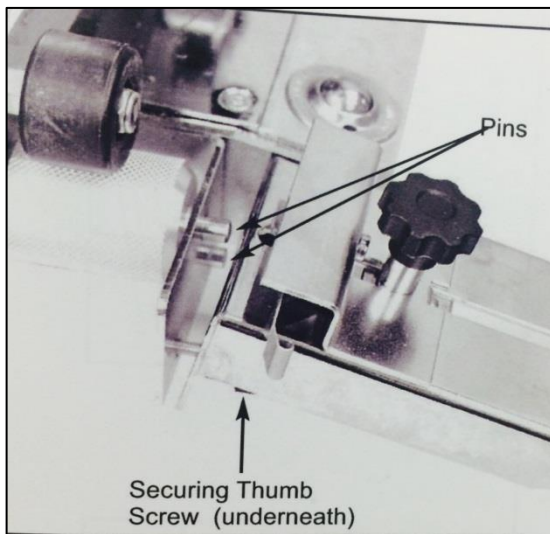
## **BASE GUIDE ATTACHMENT**

Slide guide down over pins. Secure by tightening the thumb screw (See Figure 1).

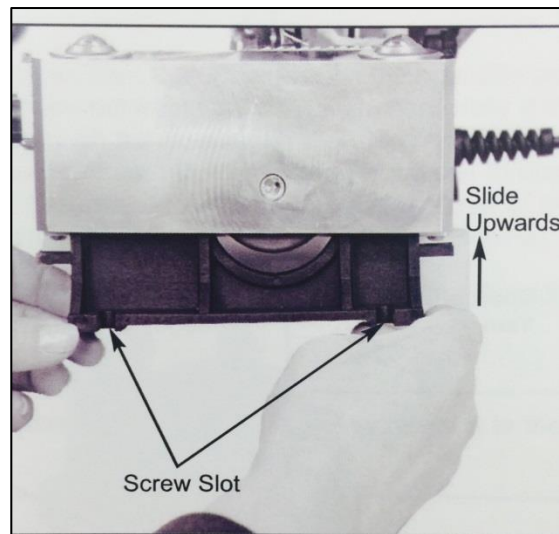
## **TABLE MOUNTING**

Lift the end of the machine. Insert the wheel in the radius. Secure to the table using screws in the screw slots (See Figure 2).

**Figure 1**



**Figure 2**

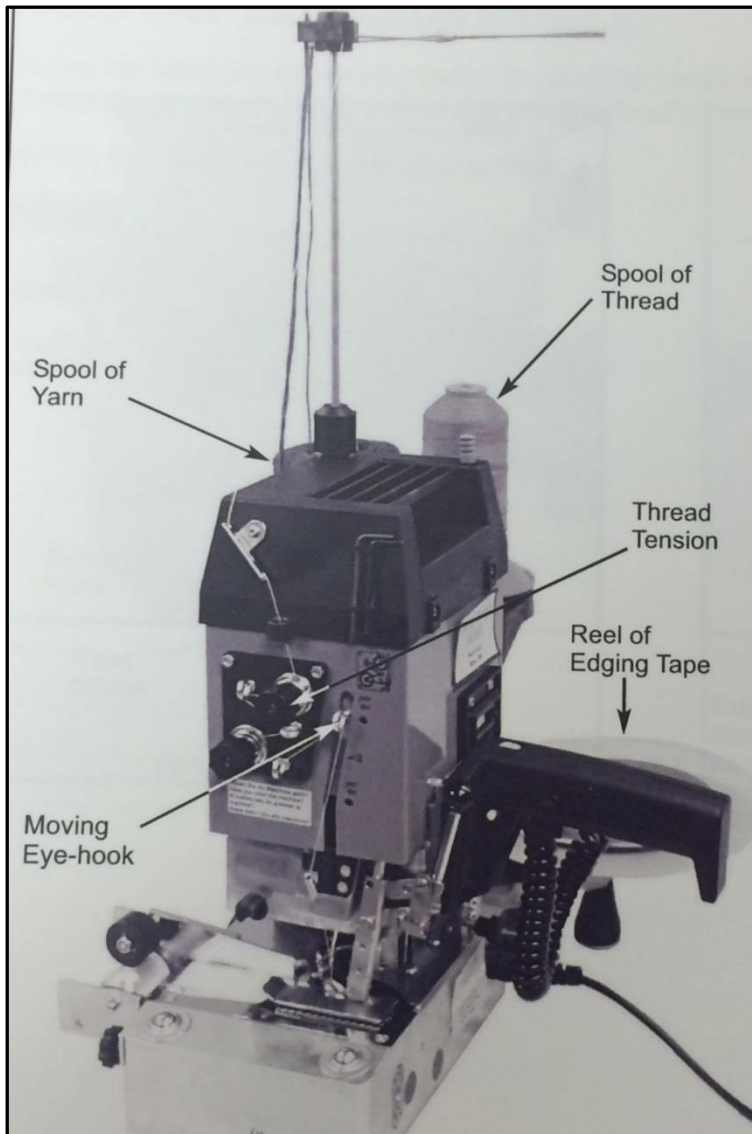


# **PROCEDURES**

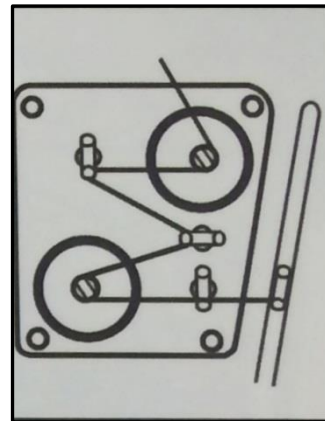
## **THREADING THE THREAD**

The thread path is shown in Figure 1 and Figure 2. Finish by threading the needle (See Figure 3).

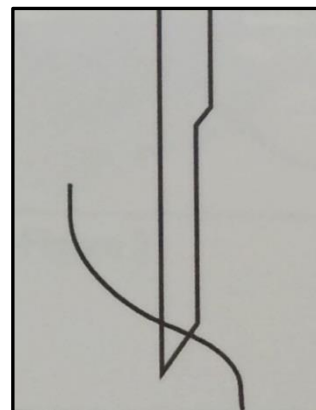
**Figure 1**



**Figure 2**



**Figure 3**



# PROCEDURES

## THREADING THE YARN

Refer to Figure 1, 2 and 3 for guidelines in threading yarn through the exit eye hooks of the tensioner. Draw approximately 15" (40cm) of yarn through the tensioner. In order to thread through the mechanism in the base of the machine, the handwheel must be turned in the direction of the arrow until:

- The looper finger with the forked end (the upper looper) is in the upper position (See Figure 1.)
- The eye hook on the front side of the housing is adjacent to the red arrowhead.

44. Insert the threader into the lower end of the threading tube where it emerges from the base of the machine on the same side as the handgrip/controller.

45. Push the threader up into the threading tube until it emerges from the upper end on the opposite side of the machine near the yarn tensioner. If the threader does not freely pass through, especially if the threader has been bent, it may be necessary to look through the opening in the stitching plate into the base of the machine and manipulate the hand wheel to ensure that the threader passes through the eye in the end of the lower looper. (Be sure that the threader passes through the eye of the looper. It may be necessary to use a small flashlight when looking through the front of the machine).

46. Hook the threader onto the yarn about 3" (8 cm) from the free end of the yarn and pull the threader back out of the base of the machine, rotating the threader in the process.



**WARNING:** Never leave the threader instead in the base of the machine. Always return it to the holding chamber in the top of the machine housing.

Figure 2

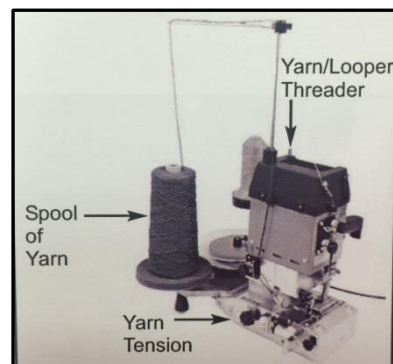


Figure 1

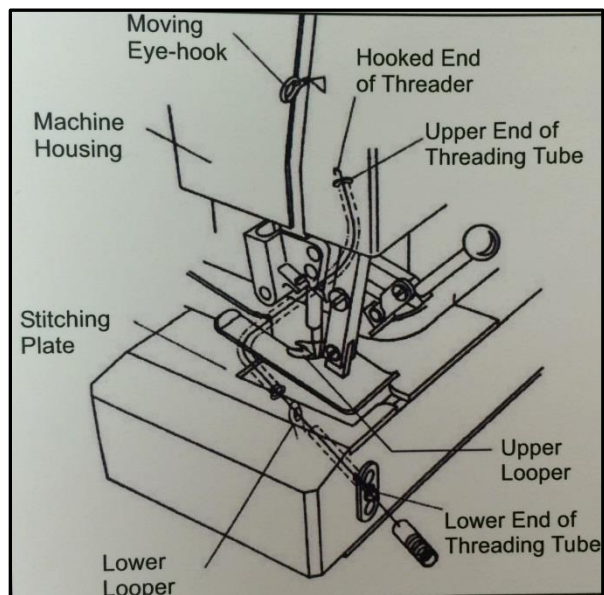
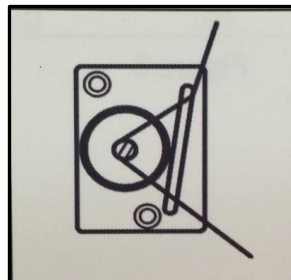


Figure 3



# **PROCEDURES**

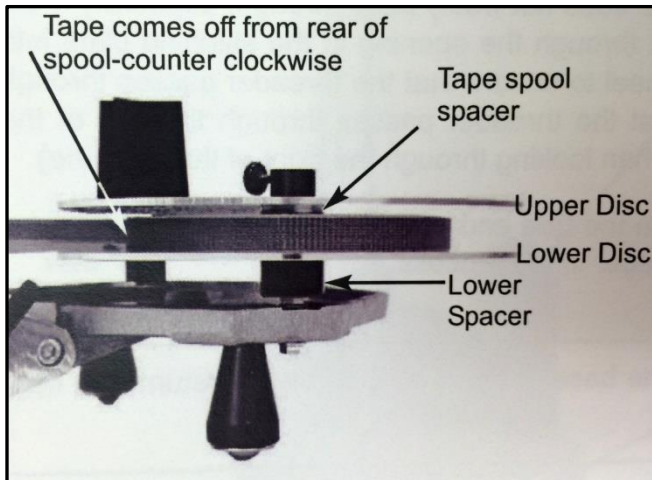
## **THREADING THE EDGING TAPE**

Attach tape stand (See Figure 1).

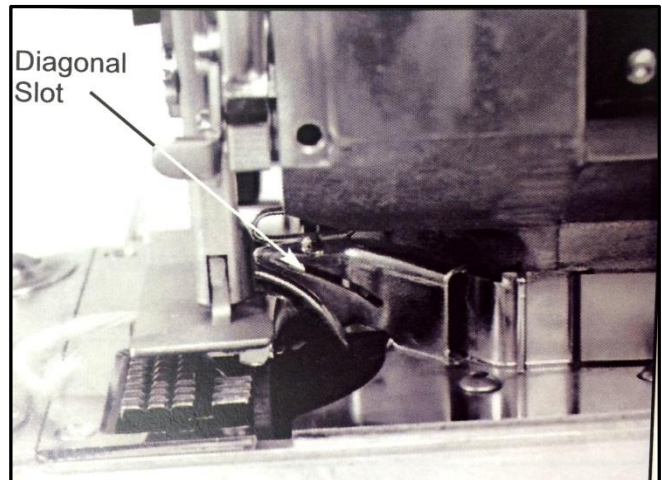
The edging tape passes through the tension control, tape guide pin, outside of the guide sleeve, forward through the diagonal slot and then is pulled forward toward the front of the machine (See Figure 3). Figure 2 shows the diagonal slot without tape.

Tension will influence whether the tape is laid higher (with low back-tension) or lower (with high back-tension) on the edge of the carpet. Note that greater back-tension will result in a narrowing of the tape. This narrowing should not be allowed to exceed 2 mm. If the tape tension is too high the carpet may get caught on the stitching plate or become bunched up.

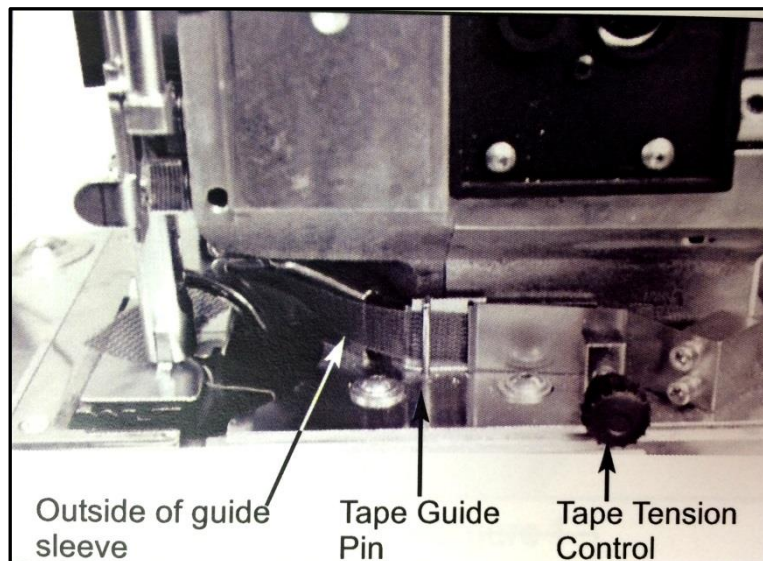
**Figure 1**



**Figure 2**



**Figure 3**



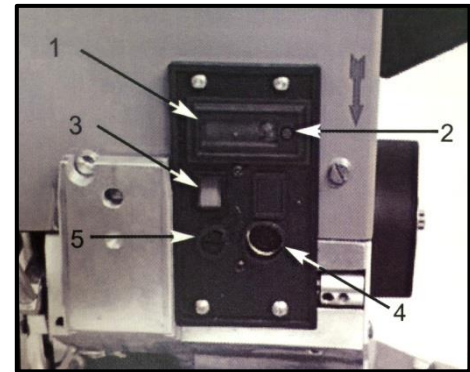
# PROCEDURES

## SWITCH PANEL

Throughput meter (operates only when the strip over-locking guide is in position)

1. Zeroing button for throughput meter
2. Main switch
3. Socket for handgrip controller and foot controller
4. Fuse

**Figure 1**



## PREPARING FOR WORK



**WARNING:** Use a surge protector when operating the machine.

Turn on the main switch. The switch will illuminate. Take hold of the ends of the thread, yarn and edging tape together in one hand (the left hand may be more convenient) and apply a slight tension. With the other hand, take hold of the hand grip controller, depress the trigger with your index figure and turn the speed adjustor with your thumb to position 2 or 3. The machine will begin to stitch a tailing. After about 5 stitches you can release the trigger (i.e. stop the machine) and let go of the thread, yarn and edging tape.



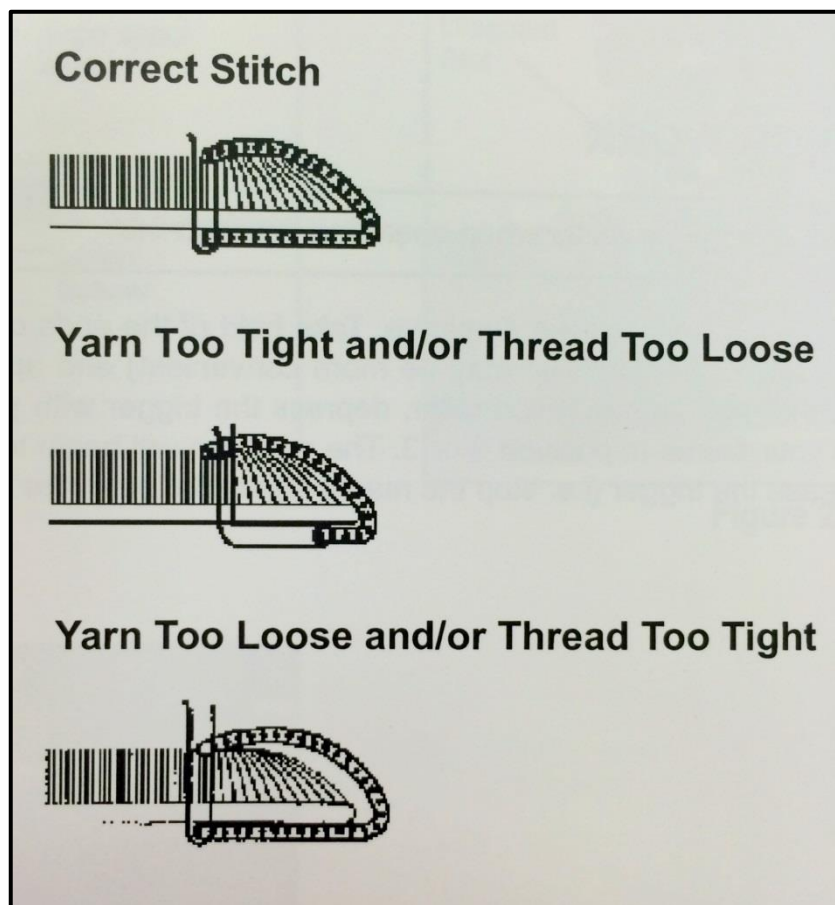
# **PROCEDURES**

## **PROCEEDING TO OVER-LOCK THE CARPET**

With the pressure foot in the elevated position, take the carpet to be over-locked and insert the edge of the carpet under the pressure foot so that the back edge of the carpet bears against the end of the tape guide. Using the pressure foot lifting lever, lower the pressure foot onto the carpet and set the machine in motion. Guide the carpet along until the start of the stitching emerges behind the pressure foot.

## **CHECKING OF THE STITCH QUALITY**

When necessary, adjust the yarn tensioner and thread tensioner by turning the respective knobs until the stitch quality is to your satisfaction.



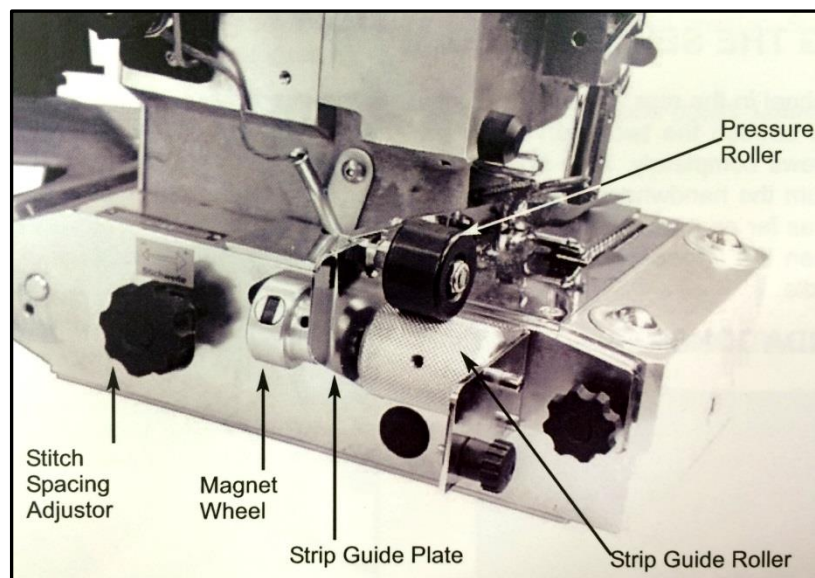
# **PROCEDURES**

## **STITCH SPACING**

Refer to Figure 1. Depending on the type of backing on the carpet, the stitch spacing may need adjustment. This is done by means of the knob on the LH side of the base of the machine. Turning the knob clockwise will increase the spacing between the stitches and turning the knob counter-clockwise will decrease the spacing.

**Note:** Do Not have the stitching so tight that it overlaps or fraying could occur.

**Figure 1**



## **OVER-LOCKING OF CARPET STRIPS**

Refer to Figure 1. The throughput meter in combination with the strip over-locking guide, measures the length of strip over-locked. The guide roller, to which the counter magnet wheel is attached, is slightly angled to keep the edge of the carpet strip lightly bearing against the guide plate. When the carpet strip is in position, lower the pressure roller onto the carpet surface to ensure positive traction on the guide/measuring roller.

The Measure: Each revolution of the guide/measuring roller represents one unit on the counter and 10 cm of carpet throughput. If meter count = 245, Throughput = 2450 cm = 24.5 meters (1 meter = approximately 3.28 feet or 1.1 yards)

# **PROCEDURES**

## **OPERATION OF THE PRESSURE FOOT**

Operate the pressure foot only when the needle is up. To raise the pressure foot up, pull down on the lifting lever knob and engage the locking latch to the latching screw head. To lower the pressure foot, pull down on the lifting lever knob and disengage the locking latch. NEVER operate the serger with the pressure foot on its up position, because it could then hit by the needle bar as it travels on its down stroke.

## **CHANGING THE SEWING NEEDLE**

Turn the handwheel in the rear side of the machine in the direction of the arrow until the needle is at its lowest position. Loosen the two Allen Screws in the bottom end of the needle driving shaft. Do not remove the screws completely. Take hold of the needle and rotate it to loosen it in the socket of the driving shaft. Turn the handwheel a quarter turn further, remove the old needle and insert the new one into the socket as far as it will go. Tighten the lower locking screw lightly. Turn the handwheel a quarter turn back, tighten the upper locking screw fully and then tighten the lower screw again if necessary. Thread the needle.

## **RECOMMENDATIONS**

Thick carpets 2.5 cm (i.e., 1") thick or greater should only be over-locked with a speed setting of 4. The sewing needle should be replaced after 5000 running meters of over-locking. (Approximately 16,500 feet). The machine should be generally cleaned once a week. Have the machine fully checked over once a year.



# **LUBRICATION**

**Note:** To prolong the life of your Porta Serge, the machine should be lubricated at intervals using our Bond spray lube.

## **RECOMMENDATIONS**

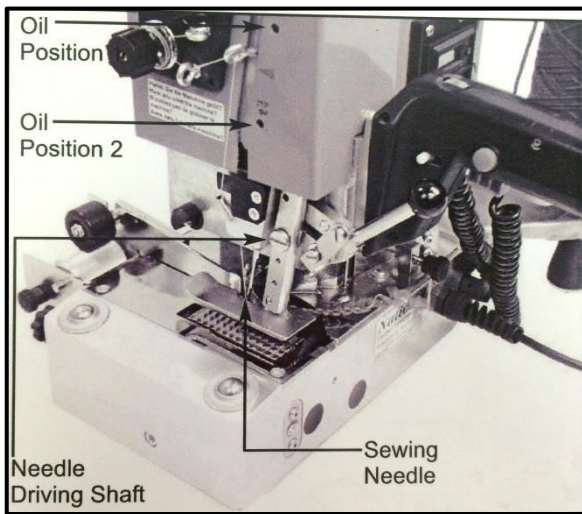
Refer to Figure 1.

Oil position 1: Turn the hand wheel of the machine in the direction of the arrow until the needle is at its lowest position. Spray the lubricant directly through the lubrication hole.

Oil position 2: Turn the handwheel, as above, until the needle is at its highest position. Spray the lubricant through the lubrication hole indicated in Figure 1.

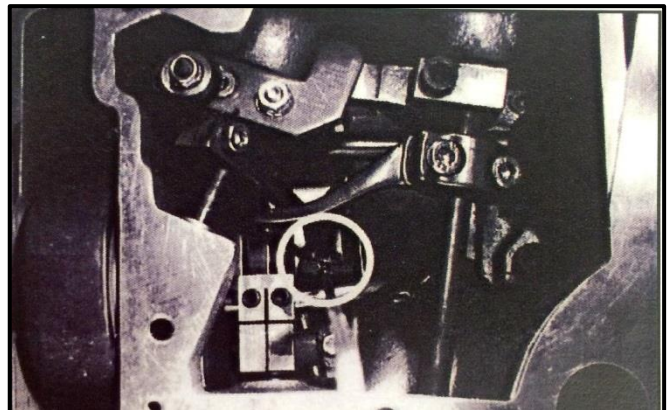
In each case the lubricant should be applied with no more than a 2 second squirt. Lubrication should be repeated after each 6 to 8 hours of running time.

**Figure 1**



**Figure 2**

Picture shows the machine from below, without the base plate.



## **NEEDLE GUIDE CLEANING**

Clean the needle guide regularly, especially after using machine on hot melt or rubber backing.

Remove the base plate by removing the three screw.

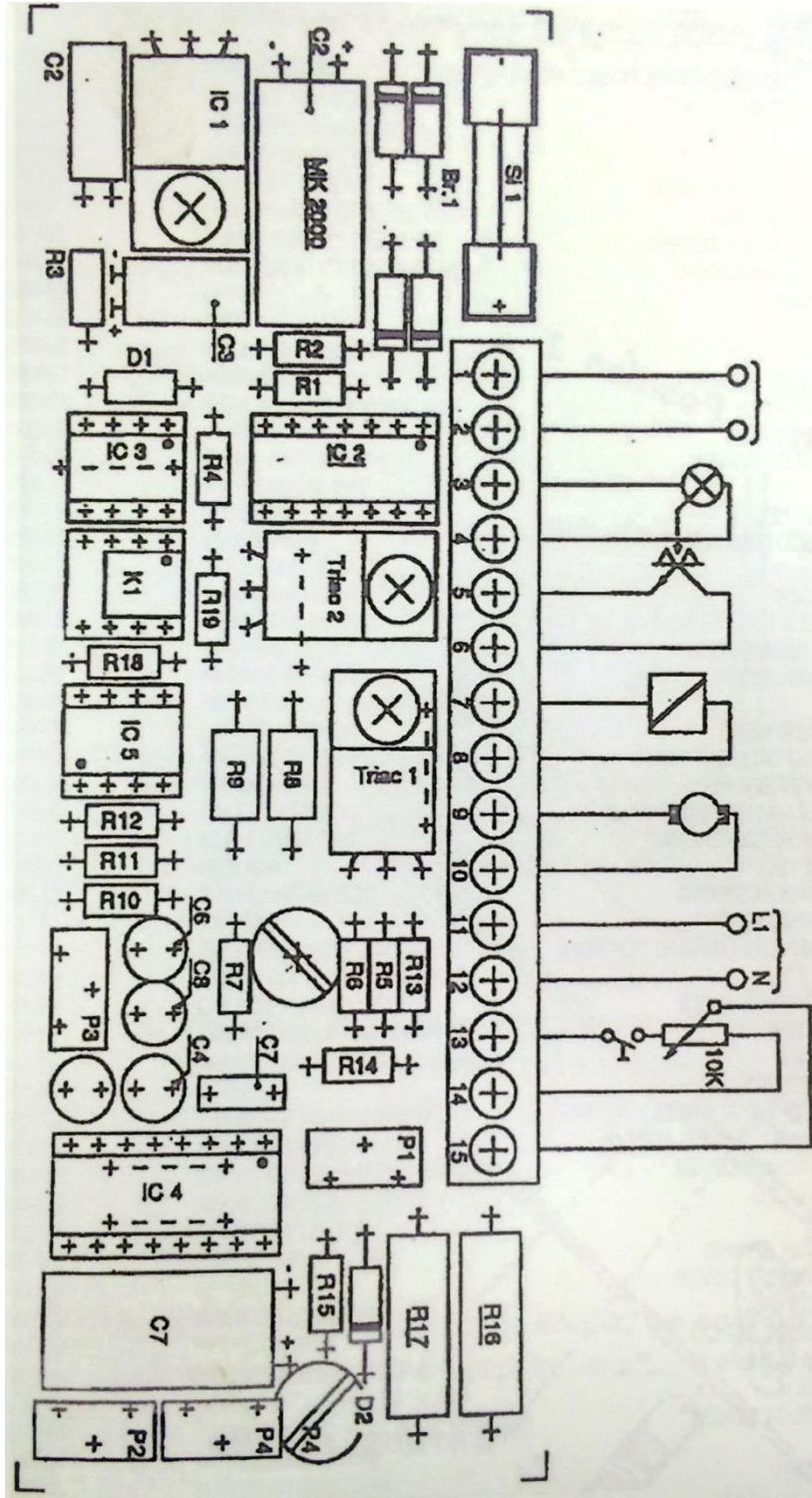
Turn the handwheel to set the lower looper to the position shown in Figure 2.

Insert the stem of our E-Z duster / canned air, squeeze trigger to send an air gust that will clean out the area you are working with.

# **TROUBLESHOOTING**

<b><u>PROBLEM</u></b>	<b><u>POSSIBLE CAUSE</u></b>	<b><u>CORRECTIVE</u></b>
<b>Missing stitches</b>	Bad carpet quality . . . . .	Change needle
<b>Machine jammed</b>	Readjust stitch spacing adjustor . . . . .	
<b>Auto lifting of foot not working</b>	Photo sensor defective . . . . . Photo sensor dirty Speed too slow	
<b>Speed adjustor not working</b>	Phase regulator defective . . . . .	Replace electronic board
<b>Machine will only run on setting 6</b>	Potentiometer in handgrip defective . . . . .	Replace potentiometer
<b>Carpet not being transported</b>	Stitch spacing adjusted too closely . . . . .	Helper looper caught in Set stitch spacing a little coarser
<b>Poor stitch profile</b>	Needle worn yarn . . . . . Yarn/Thread tension incorrect	Change needle Readjust yarn/thread tension
<b>Throughput meter not working</b>	Magnet on roller not aligning with reed contact in base of machine . . . . . Break in wiring Battery exhausted	Adjust magnet alignment  Replace meter ( 5 year battery is sealed within meter)
<b>Thread breakage</b>	After sewing over hot melt . . . . . or rubber backing	Clean the needle guide
<b>Won't run at all No power</b>	PCB circuit board and/or switch handle . . . . . defective	Replace both

# CIRCUIT BOARD



16 V Transformer

Illuminating Lamp

Photocell

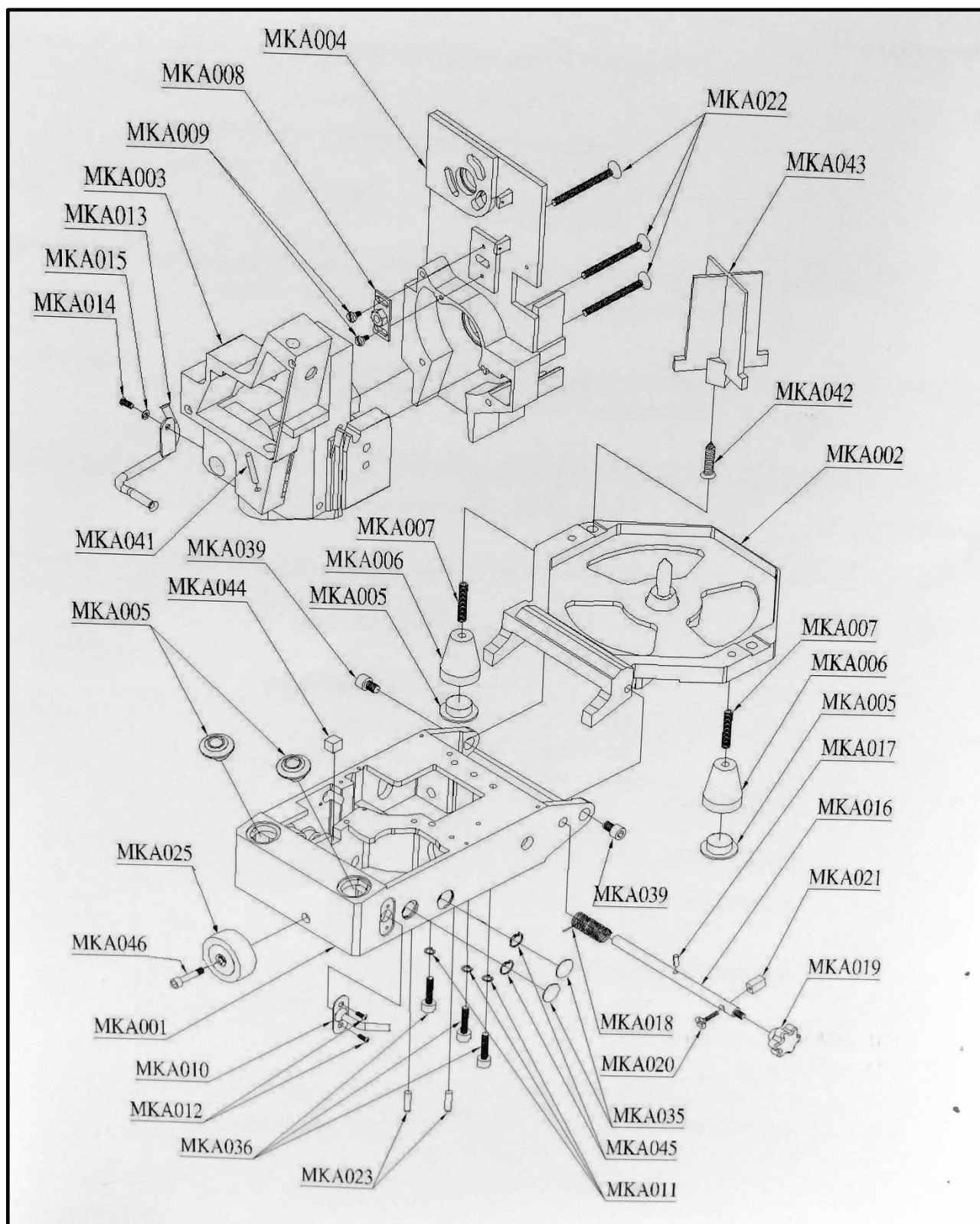
Pressure Foot Lifting  
Magnet

Motor

110 V Main Supply

Speed Control

# **COMPLETE PARTS LIST**



# **COMPLETE PARTS LIST**

<b>No.</b>	<b>Ref. No.</b>	<b>Description</b>
1	MKA001	Bottom body casting
2	MKA002	Yarn plate complete
3	MKA003	Upper body casting A
4	MKA004	Upper body casting B
5	MKA005	Ball transfer
6	MKA006	Chair wheel
7	MKA007	M8 x 40 socket set screw
8	MKA008	Adjusting belt plate
9	MKA009	M4 x 5-8.4 set screw
10	MKA010	Yarn wall tube- short
11	MKA011	6. 5x10. 7x2t spring disc
12	MKA012	M4 x 8-10, 9 Oval flat head screw
13	MKA013	Angle basket- long
14	MKA014	M5* 10.5 long basket screw
15	MKA015	5. 8*8. 8*1.5t washer
16	MKA016	Handle axle for yarn plate
17	MKA017	Adapter sleeve
18	MKA018	Leg spring for reel
19	MKA019	Knurled head nut
20	MKA020	M4 16 screw
21	MKA021	Handle axle block
22	MKA022	M6 stove allen set screw
23	MKA023	Wheel housing connecting pin
24	MKA025	Wheel
25	MKA035	Plastic round cover
26	MKA036	M6 set screw
27	MKA039	M8*10 yarn plate screw
28	MKA041	5*30 connecting solid tube
29	MKA042	6kt 8x35 wood screw
30	MKA043	Yarn take-up
31	MKA044	Foam
32	MKA045	RTW-15 C ring
33	MKA046	M6*9x22 wheel



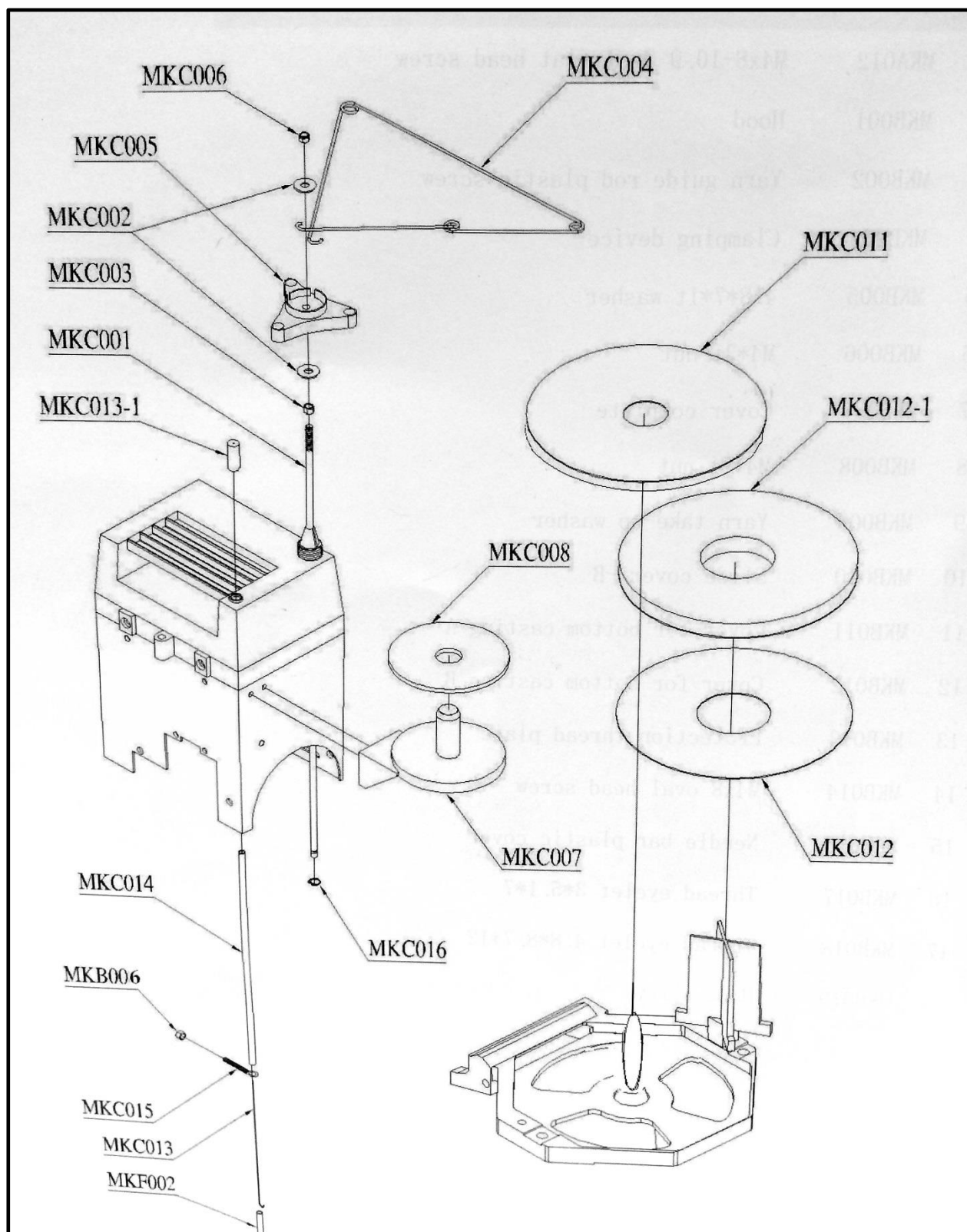
This diagram illustrates the exploded view of a mechanical assembly, showing the relationship between 20 components. The components are labeled as follows:

- MKB003
- MKA012
- MKB005
- MKB006
- MKB018
- MKB002
- MKB001
- MKB007
- MKB006
- MKA012
- MKB019
- MKA012
- MKB019
- MKB014
- MKB016
- MKB013
- MKB012
- MKA012
- MKB011
- MKA012
- MKB010
- MKB009
- MKB008

## **PART NUMBERS & DIAGRAMS**

<b>No.</b>	<b>Ref. No.</b>	<b>Description</b>
1	MKA012	M4x8-10, 9 Oval flat head screw
2	MKB001	Hood
3	MKB002	Yarn guide rod plastic screw
4	MKB003	Clamping device
5	MKB005	4.8*7&1t washer
6	MKB006	M4*3t nut
7	MKB007	Cover complete
8	MKB008	M4*5t nut
9	MKB009	Yarn take-up washer
10	MKB010	Slide cover- B
11	MKB011	Cover bottom casting A
12	MKB012	Cover bottom casting B
13	MKB013	Protection thread plate
14	MKB014	M4x8 oval head screw
15	MKB016	Needle bar plastic cover
16	MKB017	Thread eyelet 3*5. 1*7
17	MKB018	Thread eyelet 4.8*8. 7*12
18	MKB019	Hood screw

# **PART NUMBERS & DIAGRAMS**

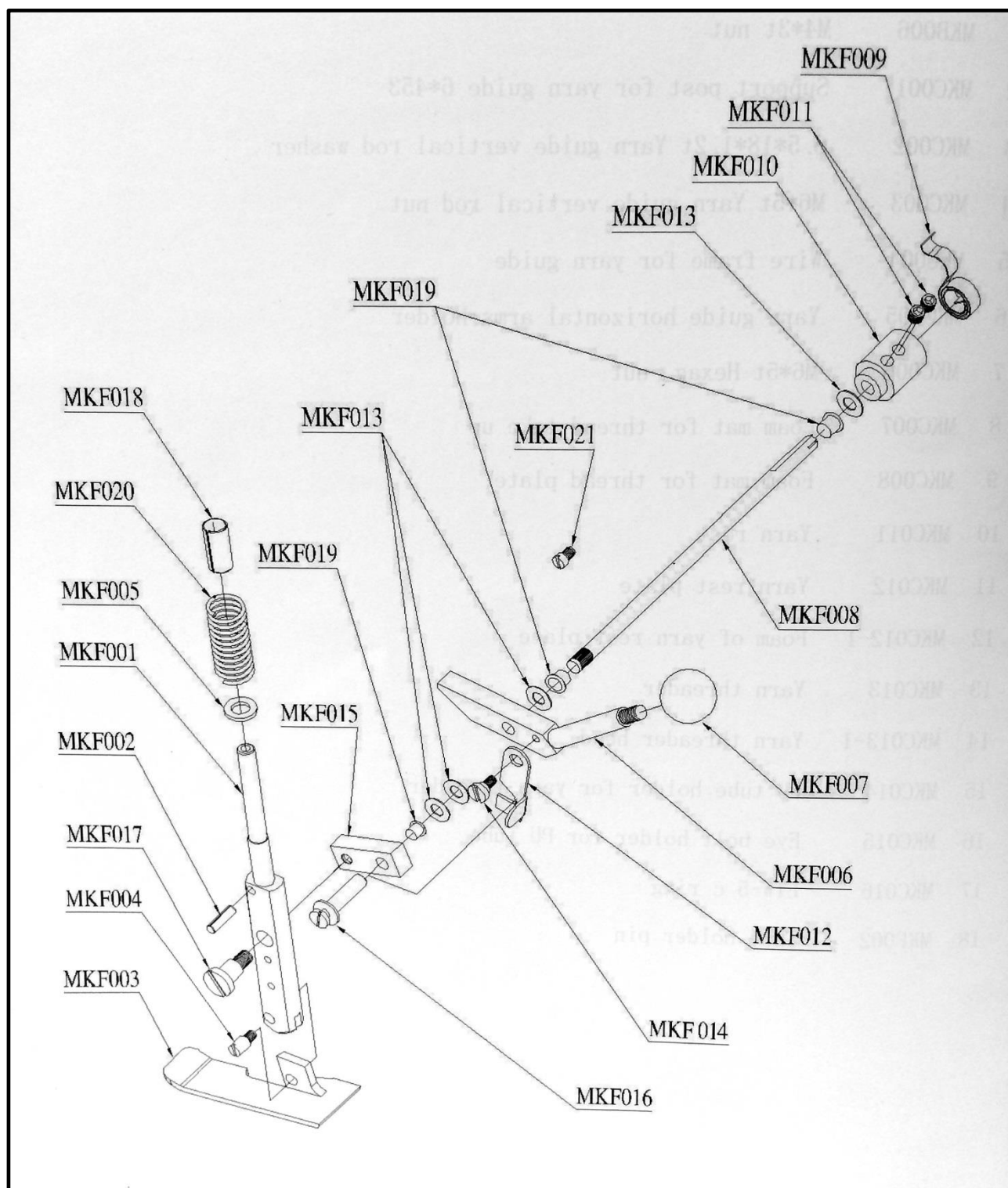




# **PART NUMBERS & DIAGRAMS**

<b>No.</b>	<b>Ref. No.</b>	<b>Description</b>
1	MKB006	M4*3t nut
2	MKC001	Support post for yarn guide 6*453
3	MKC002	6.5*18*1.2t Yarn guide vertical rod washer
4	MKC003	M6*5t Yarn guide vertical rod nut
5	MKC004	Wire frame for yarn guide
6	MKC005	Yarn guide horizontal arms holder
7	MKC006	M6*5t Hexag. Nut
8	MKC007	Foam mat for thread take up
9	MKC008	Foam mat for thread plate
10	MKC011	Yarn rest
11	MKC012	Yarn rest plate
12	MKC012-1	Foam of yarn rest plate
13	MKC013	Yarn threader
14	MKC013-1	Yarn threader head
15	MKC014	PU tube holder for yarn threader
16	MKC015	Eye bolt holder for PU tube
17	MKC016	ETW-5 c ring
18	MKF002	Tube holder pin

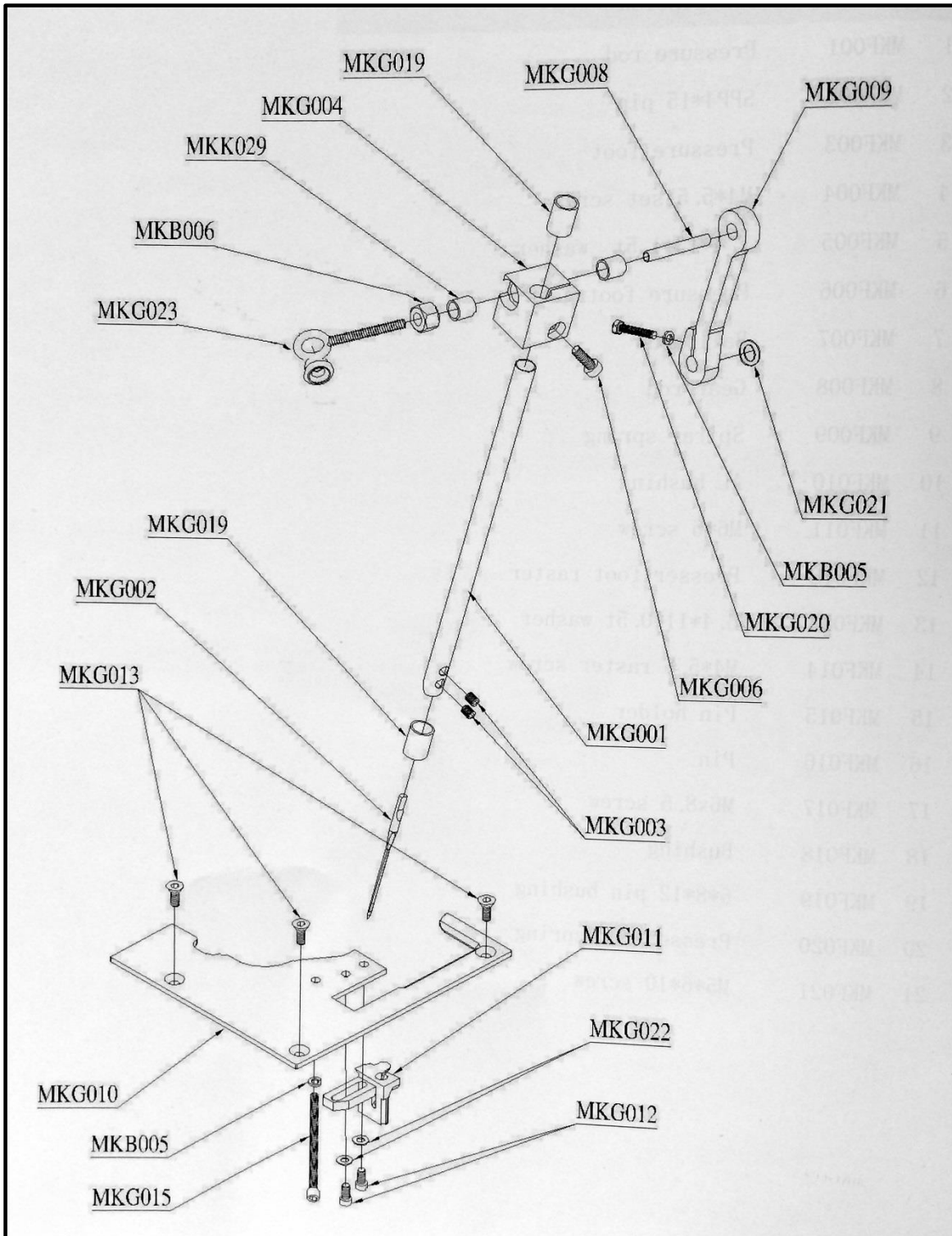
# **PART NUMBERS & DIAGRAMS**



## **PART NUMBERS & DIAGRAMS**

<b>No.</b>	<b>Ref. No.</b>	<b>Description</b>
1	MKF001	Pressure rod
2	MKF002	SPP4*15 pin
3	MKF003	Pressure foot
4	MKF004	M4*5.5 set screw
5	MKF005	7.4*13*1.5t washer
6	MKF006	Pressure foot gear
7	MKF007	Ball head
8	MKF008	Gear rod
9	MKF009	Spiral spring
10	MKF010	AL bushing
11	MKF011	M6*6 screw
12	MKF012	Presser foot raster
13	MKF013	6.4*11*0.5t washer
14	MKF014	M4*5.5 raster screw
15	MKF015	Pin holder
16	MKF016	Pin
17	MKF017	M6x8.5 screw
18	MKF018	Bushing
19	MKF019	6*8*12 pin bushing
20	MKF020	Presser rod spring
21	MKF021	M5*6*10 screw

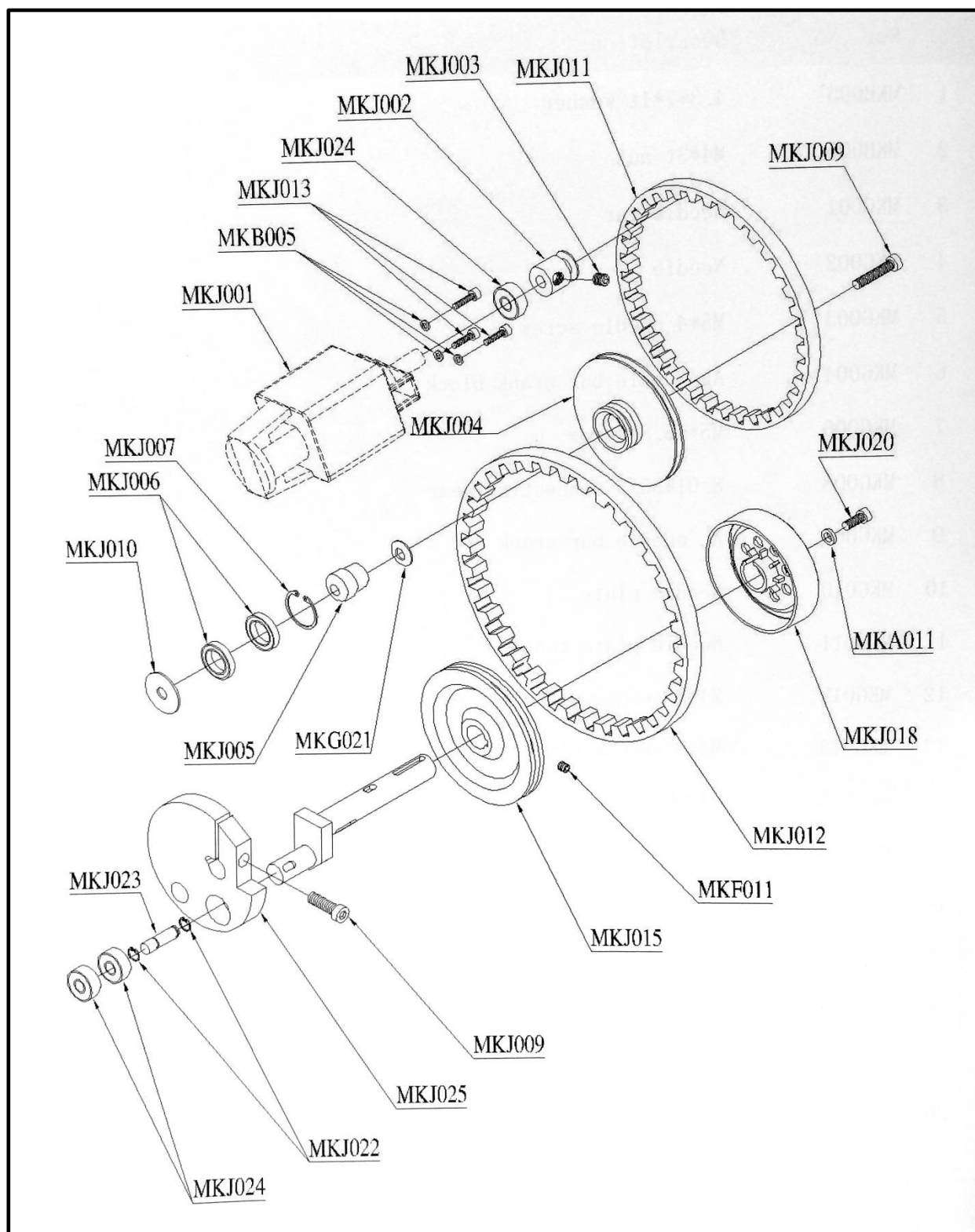
# **PART NUMBERS & DIAGRAMS**



## **PART NUMBERS & DIAGRAMS**

<b>No.</b>	<b>Ref. No.</b>	<b>Description</b>
1	MKB005	4.3*7*1t washer
2	MKB006	M4*3t nut
3	MKG001	Needle bar
4	MKG002	Needle
5	MKG003	M5*4 needle screw
6	MKG004	AL Needle bar crank block
7	MKG006	M5*15.8 screw
8	MKG008	8.01*35.5 connecting gear
9	MKG009	AL needle bar crank rod
10	MKG010	Needle plate
11	MKG011	Needle plate tongue
12	MKG012	M4*8 needle plate tongue screw
13	MKG013	M4*8 needle plate screw
14	MKG015	M4*60 screw
15	MKG019	10*12*16 needle bar bushing
16	MKG020	M4*20 crank rod screw
17	MKG021	8.2*14*0.1t washer
18	MKG022	4*8*0.5t washer
19	MKG023	Eyelet bolt
20	MKK029	Bushing for crank block

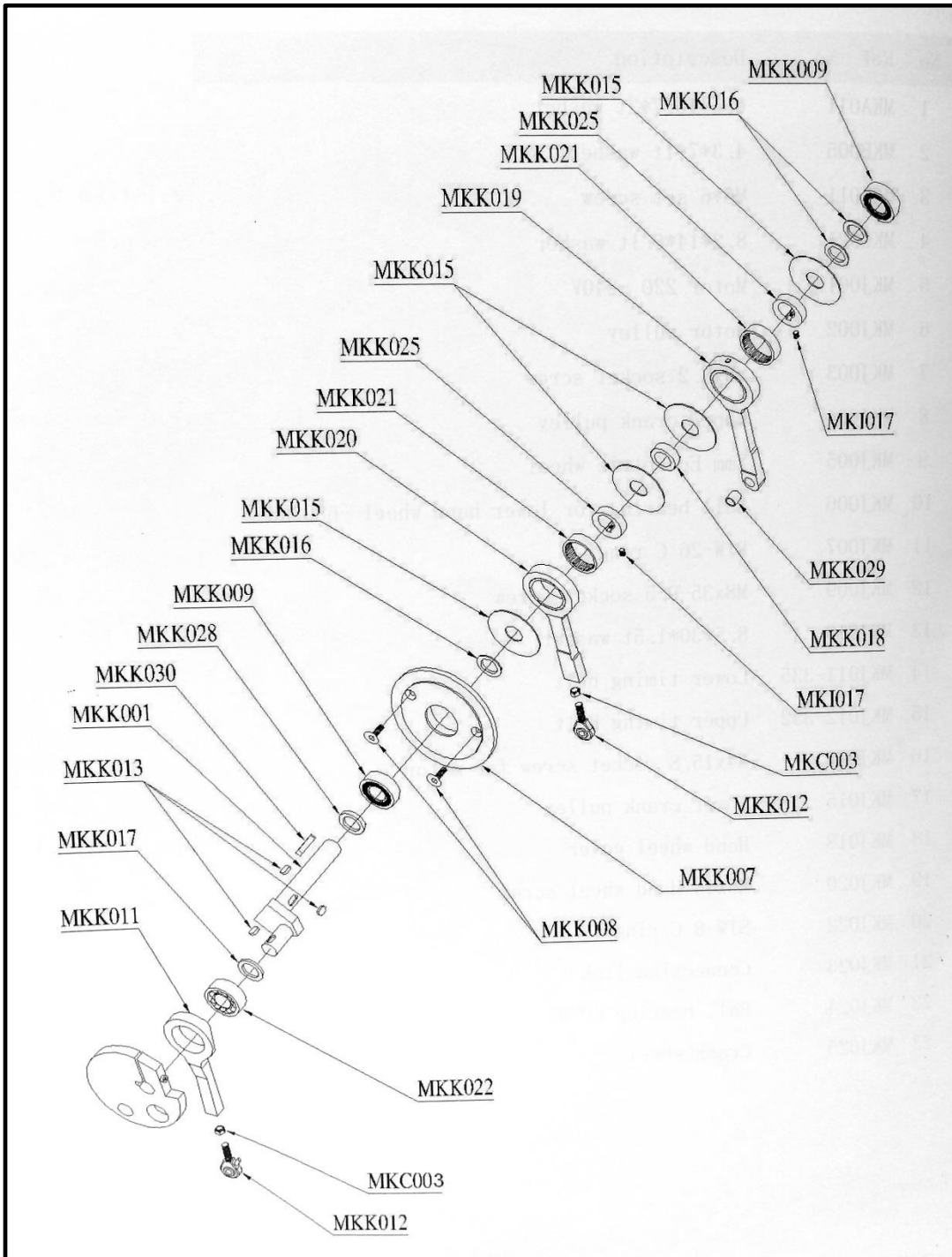
# **PART NUMBERS & DIAGRAMS**



# **PART NUMBERS & DIAGRAMS**

<b>No.</b>	<b>Ref. No.</b>	<b>Description</b>
1	MKA011	6.5*10.7*2t washer
2	MKB005	4.3*7*1t washer
3	MKF011	M6*6 set screw
4	MKG021	8.2*14*0.1t washer
5	MKJ001	Motor 220-240V
6	MKJ002	Motor pulley
7	MKJ003	M8x8.2 socket screw
8	MKJ004	Upper crank pulley
9	MKJ005	2mm Eccentric wheel
10	MKJ006	Ball bearing for lower hand wheel -6803RS
11	MKJ007	RTW-26 C ring
12	MKJ009	M8x35-0.5 socket screw
13	MKJ010	8.5*30*1.5t washer
14	MKJ011-335	Lower timing belt
15	MKJ012-352	Upper timing belt
16	MKJ013	M4x15.8 socket screw for motor
17	MKJ015	Lower crank pulley
18	MKJ018	Hand wheel cover
19	MKJ020	M6x14 Hand wheel screw
20	MKJ022	STW-8 C ring
21	MKJ023	Connecting link
22	MKJ024	Ball bearing 608RS
23	MKJ025	Crank wheel

# **PART NUMBERS & DIAGRAMS**

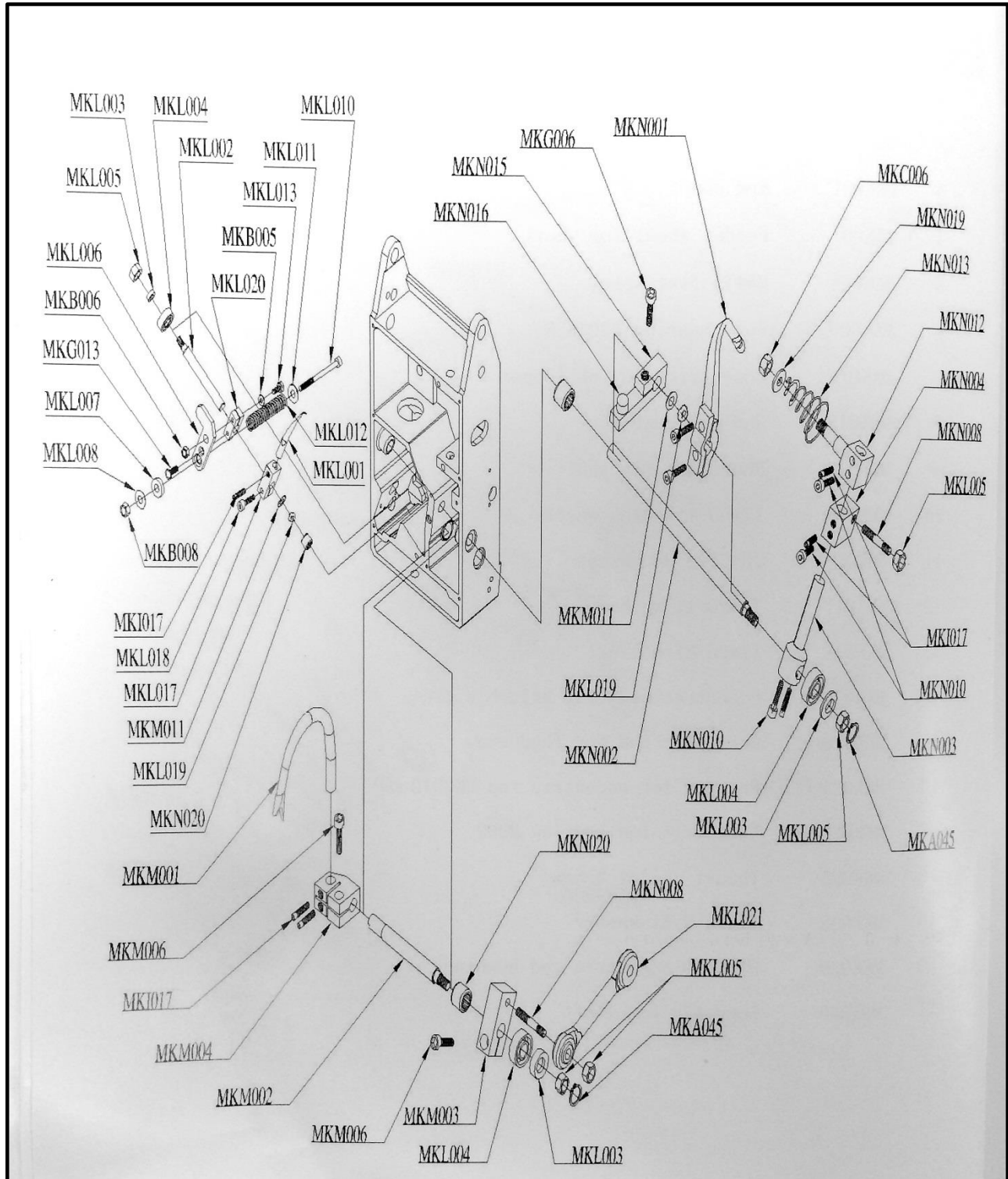




## **PART NUMBERS & DIAGRAMS**

<b>No.</b>	<b>Ref. No.</b>	<b>Description</b>
1	MKC003	M6*5t nut
2	MKI017	M5*6 set screw
3	MKK001	Arm shaft
4	MKK007	Feeder wheel for shaft
5	MKK008	M5*14 flat screw
6	MKK009	Ball bearing 6203RSR
7	MKK011	Eccentric rod for looper
8	MKK012	Rod end bearing
9	MKK013	Short pin for shaft
10	MKK015	17x50-1t crank washer
11	MKK016	18*25*0.3t washer
12	MKK017	15*20*1t washer
13	MKK018	17x25-8t collar
14	MKK019	Eccentric rod for stitch width
15	MKK020	Eccentric rod for feed dog
16	MKK021	Bearing for eccentric rod HK3012
17	MKK022	Eccentric rod bearing 2202
18	MKK025	Thrust collar 3.5 mm
19	MKK028	17x25-2.5t washer
20	MKK029	8*10*10 eccentric rod bushing
21	MKK030	Long pin for shaft

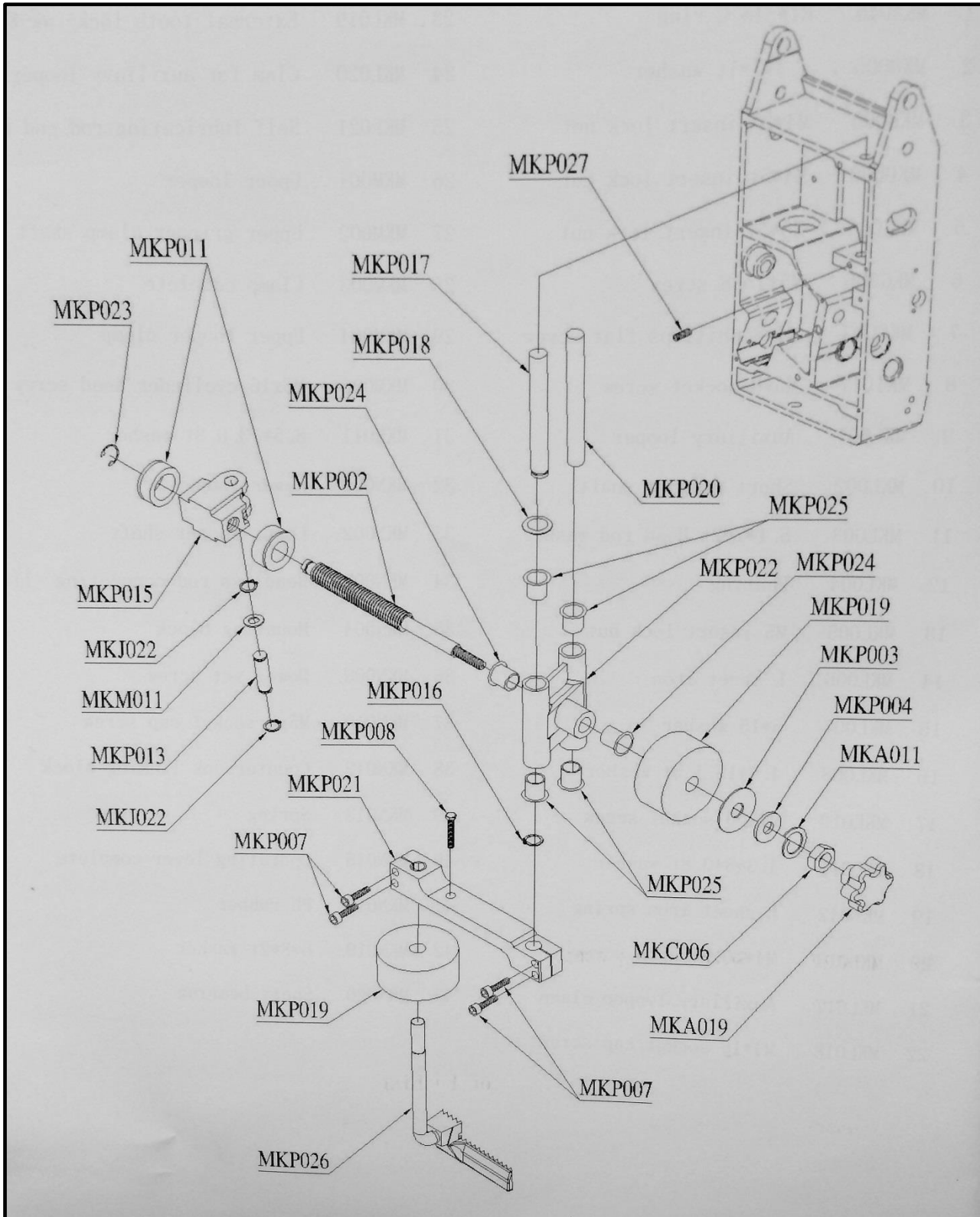
# **PART NUMBERS & DIAGRAMS**



# **PART NUMBERS & DIAGRAMS**

No.	Ref No.	Description
1	MKA045	RTW-15 C ring
2	MKB005	4.3*7*1t washer
3	MKB006	M4*3t insert lock nut
4	MKB008	M4*5t insert lock nut
5	MKC006	M6*5t insert lock nut
6	MKG006	M5*15.8 screw
7	MKG013	M4*8 phillips flat screw
8	MKI017	M5*6 socket screw
9	MKL001	Auxiliary looper
10	MKL002	Short gripper shaft
11	MKL003	5.1*7*2t Head rod washer
12	MKL004	Bearing
13	MKL005	M5 insert lock nut
14	MKL006	L sheet iron
15	MKL007	5*15 washer
16	MKL008	4.4*12.1.5t washer
17	MKL010	M4x60 socket screw
18	MKL011	4.3*8*0.8t washer
19	MKL012	L sheet iron spring
20	MKL013	M4*20 hexagon screw
21	MKL017	Auxiliary looper clamp
22	MKL018	M4*16 socket cap screw
23	MKL019	External tooth lock- ww-8
24	MKL020	Clam for auxiliary looper shaft
25	MKL021	Self-lubricating rod end bearing
26	MKM001	Upper looper
27	MKM002	Upper gripper clamp shaft
28	MKM003	Clamp complete
29	MKM004	Upper looper clamp
30	MKM006	M6x16 cylinder head screw
31	MKM011	8.5*13.0.8t washer
32	MKN001	Lower looper
33	MKN002	Lower looper shaft
34	MKN003	Headless rod connecting link
35	MKN004	Mounting block
36	MKN008	Dowel set screw
37	MKN010	M5x8 socket cap screw
38	MKN012	Countersunk linking block
39	MKN013	Spring
40	MKN015	Operating lever complete
41	MKN016	PU rubber
42	MKN019	6*8*2t washer
43	MKN020	Shaft bearing

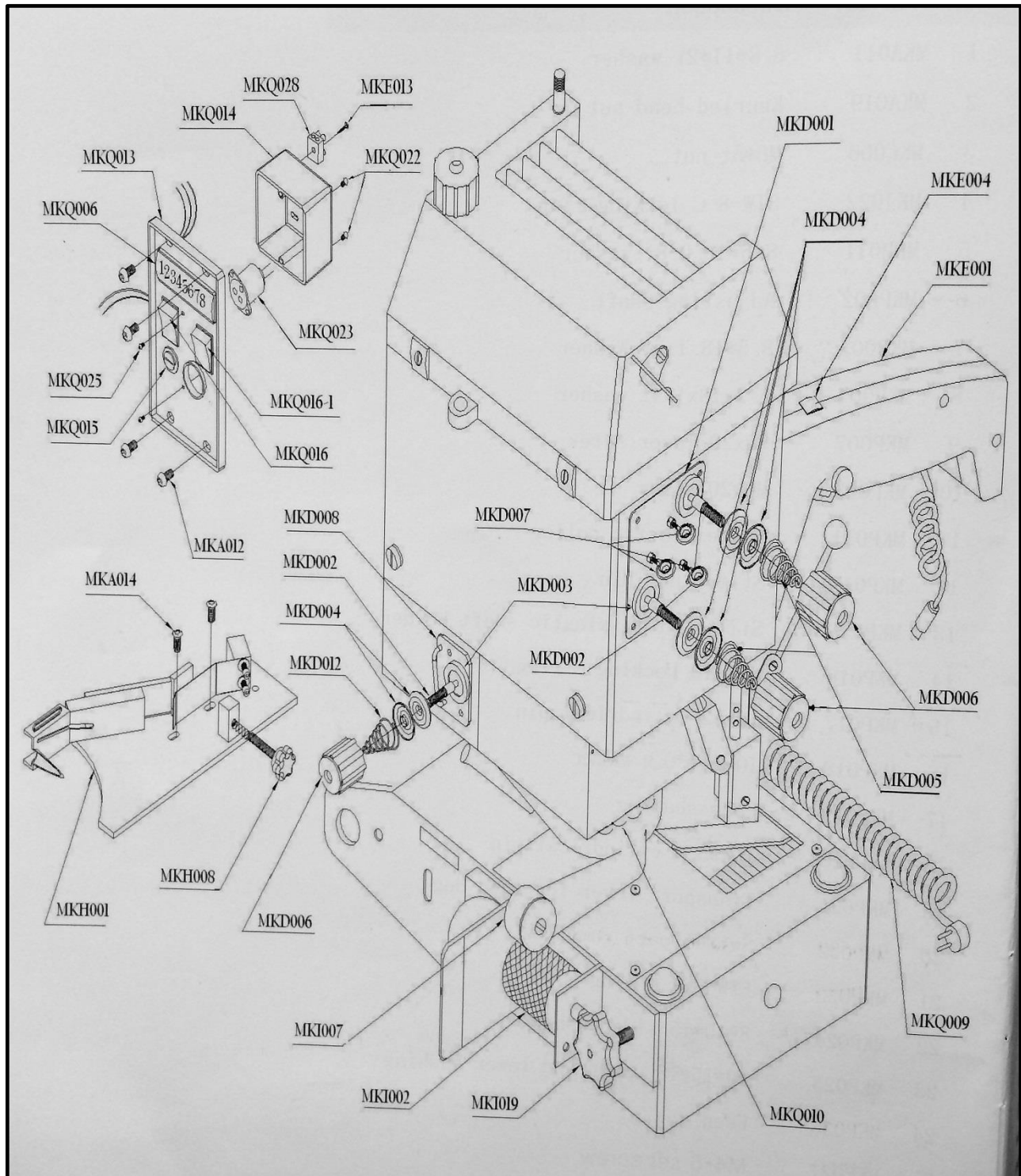
# **PART NUMBERS & DIAGRAMS**



## **PART NUMBERS & DIAGRAMS**

<b>No.</b>	<b>Ref. No.</b>	<b>Description</b>
1	MKA011	6.8*11*2t washer
2	MKA019	Knurled head nut
3	MKC006	M6*5t nut
4	MKJ022	STW-8 C locking ring
5	MKM011	8.5*13.0.8t washer
6	MKP002	Adjusting shaft
7	MKP003	8.5*18.1.5t washer
8	MKP004	6.2x18x1.4t washer
9	MKP007	M5x20 lever screw
10	MKP008	M6*20 screw
11	MKP011	White plastic collar
12	MKP013	Stitch nut pin
13	MKP015	Stitch width plastic shaft holder
14	MKP016	STW-10 Locking C ring
15	MKP017	10x82 cylindrical pin
16	MKP018	10.1*16*0.3t washer
17	MKP019	Foam sealing
18	MKP020	10x93.4 cylindrical pin
19	MKP021	Transport lever for feed dog
20	MKP022	Swirel part complete
21	MKP023	ETW-7BK C ring
22	MKP024	8*10*15* side bushing
23	MKP025	10*15*18 upper and lower bushing
24	MKP026	Feed dog
25	MKP027	M4*6 set screw

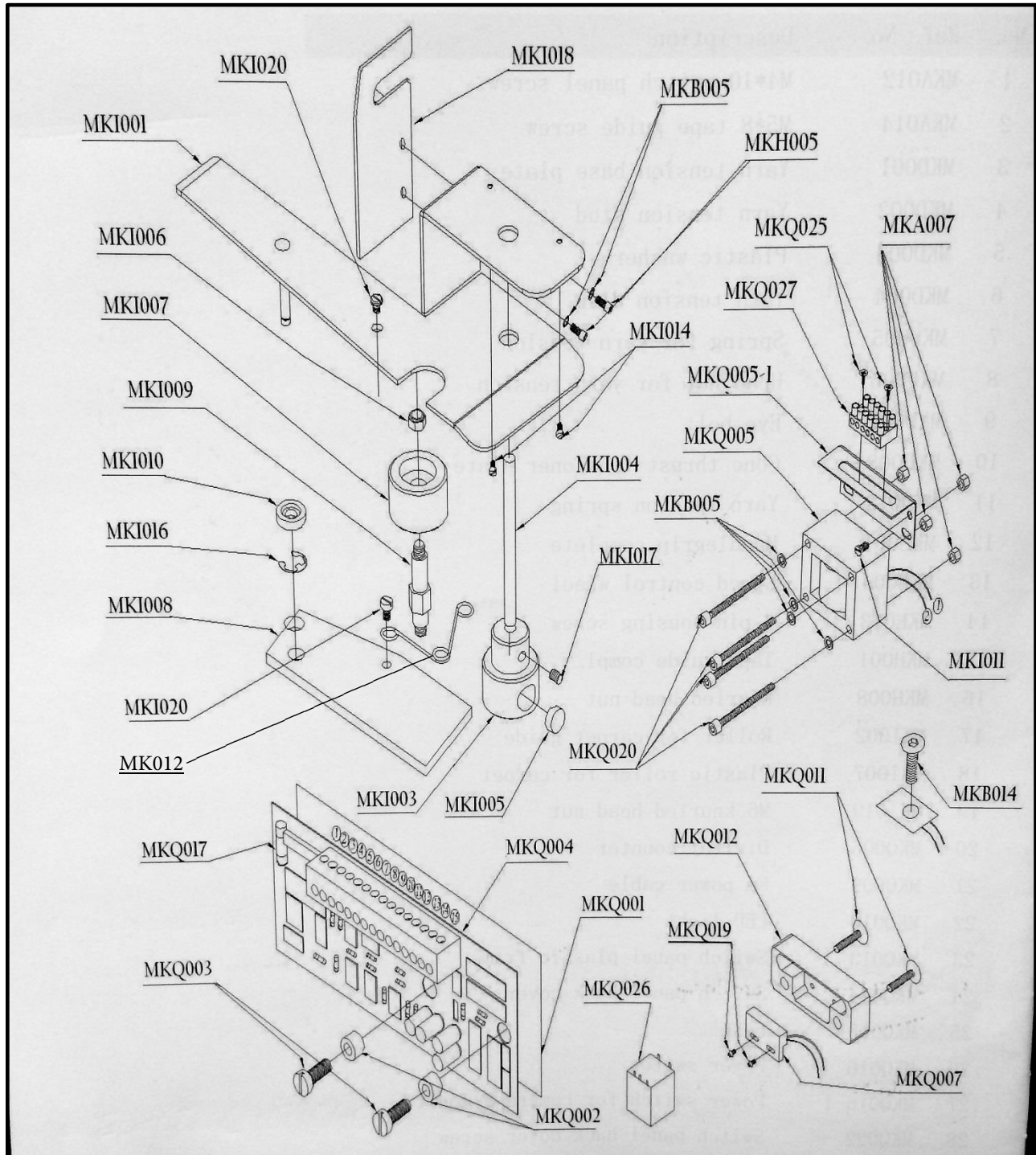
# **PART NUMBERS & DIAGRAMS**



## **PART NUMBERS & DIAGRAMS**

<b>No.</b>	<b>Ref. No.</b>	<b>Description</b>
1	MKA012	M4*10 switch panel screw
2	MKA014	M5*8 tape guide screw
3	MKD001	Yarn tension base plate
4	MKD002	Yarn tension stud
5	MKD003	Plastic washer
6	MKD004	Yarn tension disc
7	MKD005	Spring for yarn tension
8	MKD006	Head nut for yarn tension
9	MKD007	Eye bolt
10	MKD008	Cone thrust tensioner plate
11	MKD012	Yarn tension spring
12	MKE001	Handle grip complete
13	MKE004	Speed control wheel
14	MKE013	4 pin housing screw
15	MKH001	Tape guide complete
16	MKH008	Knurled head nut
17	MKI002	Roller for carpet guide
18	MKI007	Plastic roller for carpet
19	MKI019	M6 knurled head nut
20	MKQ006	Digital counter
21	MKQ009	8m power cable
22	MKQ010	LED light
23	MKQ013	Switch panel plastic frame
24	MKQ014	Switch panel back cover
25	MKQ015	Fuse
26	MKQ016	Power switch
27	MKQ016-1	Power switch for camera & monitor
28	MKQ022	Switch panel back cover screw
29	MKQ023	Power connector
30	MKQ025	Power connector screw
31	MKQ028	4 pin housing

# **PART NUMBERS & DIAGRAMS**





## **PART NUMBERS & DIAGRAMS**

<b>No.</b>	<b>Ref. No.</b>	<b>Description</b>
1	MKA007	M8*40 nut
2	MKB005	4.3*7*1t washer
3	MKB014	M4*8 torx screw
4	MKH005	M4*6 socket head cap screw
5	MKI001	Puller base
6	MKI003	Sensor roller
7	MKI004	Axle shaft
8	MKI005	Magnet 10*5
9	MKI006	M6*5t nut
10	MKI007	White roller
11	MKI008	Roller holder plate
12	MKI009	Roller shaft
13	MKI010	White plastic
14	MKI011	M3*4 flat head screw
15	MKI014	M4*6 round head screw
16	MKI016	C-ring for white roller plate
17	MKI017	M5*6 socket set screw
18	MKI018	Puller side plate
19	MKI020	M3*4 round head screw
20	MKQ001	Insulation sheet 0.4t
21	MKQ002	Counter sensor
22	MKQ003	PCB flat screw
23	MKQ004	PCB electric circuit board
24	MKQ005	Transformer 220V, 1.3A
25	MKQ005-1	Transformer holder plate
26	MKQ007	Read counter
27	MKQ011	Read counter cover screw
28	MKQ012	Read counter cover
29	MKQ017	PCB fuse
30	MKQ019	Read counter fix screw
31	MKQ020	M3-0.5*35 socket head screw
32	MKQ025	Housing screw
33	MKQ026	AC capacitor 250V 0.15uf
34	MKQ027	Housing

\*35\*      MKI012      TENSION SPRING FOR ROLLER HOLDER PLATE

# **PART NUMBERS & DIAGRAMS**

Bond Products, Inc. (Bond) warrants to the first consumer/purchaser that this Bond brand product (the Bond Alpha Mini Portable Serger), when shipped in its original container, will be free from defective workmanship and materials and agrees that it will, at its option, either repair the defect or replace the defective product or part thereof at no charge to the purchaser for parts or labor for the period(s) set forth below.

This warranty does not apply to any appearance items of the product, to the additional excluded items set forth below, or to any product, the exterior of which has been damaged or defaced, which has been subjected to misuse, abnormal service or handling, or which has been altered or modified in design or construction.

In order to enforce the rights under this limited warranty, the purchaser should follow the steps set forth below and provide proof of purchase to Bond.

The limited warranty described herein is in addition to whatever implied warranties may be granted to purchasers by law. ALL IMPLIED WARRANTIES INCLUDING THE WARRANTIES OF MERCHANTABILITY AND FITNESS FOR USE ARE LIMITED TO THE PERIODS FROM THE DATE OF PURCHASE AS SET FORTH BELOW. Some states do not allow time limitations on an implied warranty, so the above limitation may not apply to you.

Neither the sales person of the seller, nor any other person, is authorized to make any other warranties other than those described herein, or to extend the duration of any warranties beyond the time period described herein on behalf of Bond.

The warranties described herein shall be the sole and exclusive warranties granted by Bond and shall be the sole and exclusive remedy available to the purchaser. Correction of defects in the manner and for the period of time described herein shall constitute complete fulfillment of all liabilities and responsibilities of Bond to the purchaser with respect to the product and shall constitute full satisfaction of all claims, whether based on contract, negligence, and strict liability or otherwise. In no event shall Bond be liable, or in any way responsible for any damage or defects in the product which were caused by repairs or attempted repairs performed by anyone other than Bond. Nor shall Bond be liable, or in any way responsible, for any incidental or consequential, economics or property damage. Some states do not allow the exclusion of incidental or consequential damages, so the above exclusion may not apply to you.

THIS WARRANTY GIVES YOU SPECIFIC LEGAL RIGHTS. YOU MAY ALSO HAVE OTHER RIGHTS WHICH VARY FROM STATE TO STATE.

## **WARRANTY PERIOD**

The Bond Alpha Mini Portable Serger is guaranteed to be free of manufacturer defective workmanship and in quality of materials for a period 90 days.

Items excluded from warranty coverage, unless found and reported defective immediately upon removal from the original shipping container and before being used by the original purchaser.

A freight damage claim must be filed with the carrier by the purchaser; the shipper cannot file the freight claim.

To obtain service contact Bond Products, Inc. TOLL FREE at 888-800-2663 for a repair authorization number. Warranty repairs must be accompanied by date of purchase receipt and a return/repair authorization number.

# RETURN SHEET

WHEN SHIPPING MACHINE, SHIP IN ORIGINAL CARTON

SEND COPY OF THIS FORM INSIDE BOX

Company Name \_\_\_\_\_

Contact Name \_\_\_\_\_

Telephone Number \_\_\_\_\_

Approximate Usage (hours) \_\_\_\_\_

Problems Encountered \_\_\_\_\_

Check One: ☐ Repair

Do you wish to be contacted before repairing	<input type="checkbox"/> Yes	<input type="checkbox"/> No
Return Authorization #: _____	Date	

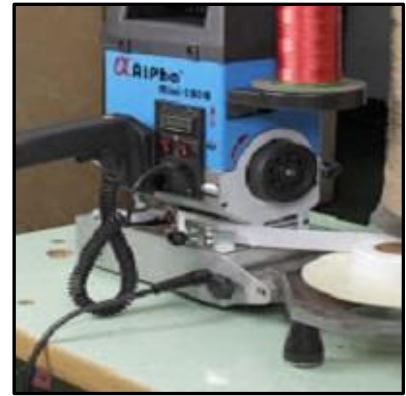
required, contact Bond

Customer Number \_\_\_\_\_

if known

Purchased From \_\_\_\_\_

if not directly from Bond Products, Inc.



## **Bond's Alpha – mini 2000 has the best value of any portable carpet serger available!**

- ✓ Great for all carpet, rugs, & mats
- ✓ Utilizes the latest technology
- ✓ Handles large range of carpet thickness & backings
- ✓ Wraps perpendicular on the edges, not at an angle
- ✓ Wraps evenly around edge, on both top & bottom
- ✓ Maneuvers swiftly on its ball bearing wheels
- ✓ Serges outside & inside corners, curves, or scallops with ease
- ✓ Speed controlled electronically
- ✓ Digital meter registers the volume of serging
- ✓ Standup handle available
- ✓ Lightweight & easy to transport
- ✓ Designed for heavy duty use
- ✓ Comes with spare needles, tool kit, & operation manual
- ✓ Increases productivity
- ✓ 90 day warranty against manufacturer defects

