

ADJUSTING INSTRUCTIONS AND ILLUSTRATED PARTS LIST

Introducing our latest creation...

All New Model PBB Portable Bobbinless Binder! **PBB 2 x 2 & 4 x 4 MODELS**



BOND PRODUCTS INC

4511 WAYNE AVE PHILADELPHIA PA 19144

TOLL FREE PHONE 888-800-BOND (2663)

TOLL FREE FAX 800-582-9643

LOCAL PHONE 215-842-0200

LOCAL FAX 215-844-7175

EMAIL: sales@bondproducts.com

WEB: www.bondproducts.com



WELCOME...

.....to Carpet Binding 101. The bond team has been serving the carpet trade for 61 years. This is your one-stop source for everything you need to finish and bind carpet. In addition, we have many specialty products that are custom designed to meet the needs of carpet mechanics, workrooms and Do-It-Yourself customers.

Our experienced staff will assist you in selecting the right products for your job: Cutting and binding machines, carpet binding tapes in a wide variety of styles and colors, and serging tape for use with our binding machines. Also, carving machines for sculpted area rugs, sundry tools and products necessary for completion of your tasks.

Look to Bond for all your carpet-related needs!

Carpet Binding 101



Introducing
BOND'S PORTABLE BOBBINLESS CARPET BINDER
PBB-4x4 and PBB-2x2

This instruction manual has been prepared and written to guide you in the usage of your PORTABLE BOBBINLESS BINDER. In order to obtain maximum efficiency from this machine, we urge you to read this entire manual thoroughly before using the machine for the first time.

Although this machine has been carefully assembled, inspected and tested, should it ever need factory service, we recommend it be shipped in its original carton. If the original carton is no longer available, you may use a sturdy carton with ample room to allow packing material (i.e. foam, carpeting, etc.) to surround the entire machine, (especially the bottom) to prevent it from shifting inside while in transit.

Send or address all inquiries or returns to:

Service Manager
BOND PRODUCTS INC
4511 Wayne Avenue
Philadelphia PA 19144- 3639 USA
Call Toll Free (888-800-2663) or
Fax Toll Free (800-582-9643)

When ordering replacement parts or supplies identify the model and serial number of the machine. We recommend shipping the machine for repairs via UPS, FedEx, or Parcel Post. Be sure to insure its value in case of damage during transit.

BOND MANAGEMENT

Limited 90 Day Warranty

Bond Products, Inc. makes every effort to assure that its products meet high quality and durability standards and warrants, to the original purchaser, that this product is free from defects in materials and workmanship for a period of 90 days from date of purchase. This warranty does not apply to damage due, directly or indirectly, to misuse, abuse, negligence, repairs or alterations outside our facilities, or lack of maintenance.

We shall in no event be liable for death or injuries to persons or property, or for incidental, contingent, special, or consequential damages arising from the use of our products. Some states do not allow the exclusion or limitation of incidental or consequential damages, so the above limitation or exclusion may not apply to you.

To take advantage of this warranty, the product or part must be returned to us with transportation charges prepaid. Proof of purchase and an explanation of the complaint must accompany the merchandise. If our inspection verifies the defect, we will either repair or replace the product at our election, or we may elect to refund the purchase price if we cannot readily and quickly provide you with a replacement. The repaired product will be returned to you via the most economical route, and you will be charged for the cost of transportation.

This warranty gives you specific legal rights. You may also have other rights which vary from state to state.

WARNING

PERSONAL INJURY MAY RESULT IF THE FOLLOWING SAFETY PRECAUTIONS ARE NOT OBSERVED.

1. BE SURE THE AREA SURROUNDING MACHINE IS FREE OF ALL HAZARDS SUCH AS FIRE, WATER, OIL, RUBBISH OR ANYTHING THAT CAN CAUSE INJURY.
2. DO NOT OPERATE MACHINE IN AN EXPLOSIVE AREA OR UNDER WET CONDITIONS. THE MACHINE IS NOT AN EXPLOSION PROOF TYPE, NOR WATER-PROOF TYPE.
3. DO NOT OPERATE MACHINE BEFORE READING INSTRUCTION MANUAL.
4. DO NOT OPERATE MACHINE ON VOLTAGES OTHER THAN SPECIFIED FOR THE MACHINE.
5. BE SURE MACHINE IS CONNECTED TO BUILDING ELECTRICAL SAFETY GROUND (EARTH).
6. BE SURE POWER (AND AIR SUPPLY) IS OFF BEFORE PERFORMING MACHINE MAINTENANCE, PARTS REPLACEMENT, ADJUSTMENTS OR CLEANING.
7. DO NOT OPERATE MACHINE WITH GUARDS AND COVERS REMOVED.
8. DO NOT TOUCH KNIFE, NEEDLE, PULLEY, BELT AND MOVING PARTS WHEN MACHINE IS IN OPERATION.
9. BE SURE MACHINE IS PLACED ON A SMOOTH (LEVEL) SURFACE WHEN PERFORMING MAINTENANCE, PARTS REPLACEMENT, ADJUSTMENTS, CLEANING OR STORAGE.
10. BE SURE THE MATERIAL TO BE SEWN OR CLOSED COMPLIES WITH THE MACHINE SPECIFICATIONS.
11. DO NOT USE SPARE PARTS OTHER THAN "BOND" GENUINE PARTS.

Identifying and Ordering Parts

Where the construction permits, each part is stamped with its part number. On all orders, please include part number, part name and model name of machine.

(SAMPLE: PBB203081 Looper)

Safety Rules

To prevent personal injury:

- All power sources to the machine must be turned off before threading, oiling, adjusting or replacing parts.
- All cover and guards must be in position before operating machine.
- Do not tamper with safety cover, guards, etc., while machine is in operation.

Cautions When Using the Machine

Safety Precautions

- 1) Always turn power off before threading, oiling, and adjusting the machine or replacing parts.
- 2) Wear safety glasses.
- 3) Make sure before starting the machine that all covers and shields are in place and closed.

Maintenance

- Please keep in mind to handle the machine carefully and to maintain the machine in good condition.
- Thread fuzz or dust must be cleaned with air or brush on throat plate, in the groove of feed dog or around looper after the day's work.
- Wipe the area easy to rust with oil cloth.
- Check the machine for loose screws and tighten them, if any, once a month.
- Good maintenance will prolong the machine life.

CONTENTS

1. SPECIFICATIONS.....	1
2. THE POINTS BEFORE OPERATION.....	1
3. THREADING.....	4
4. OILING.....	5
5. OPERATION.....	5
6. ADJUSTING.....	6
6-1 Needle and Looper.....	6
6-2 Needle Height.....	6
6-3 Gap between Looper and Needle.....	7
6-4 Feed Dog Height.....	7
6-5 Needle Guard Adjustment.....	8
PARTS LIST.....	9~
NUMERICAL INDEX OF PARTS.....	21, 22
DIAGRAM OF SCREW, NUT & WASHER.....	23
PARTS ASSEMBLIES DIAGRAMS.....	24~40
Frame 1- Puller Assembly.....	24
Frame 2- Puller Wheel Assembly.....	25
Frame 3- Rear Puller Frame Assembly.....	26
Frame 4- Puller Lifter Assembly.....	27
Frame 5- Lower Rear Puller Assembly.....	28
Frame 6- Motor Bracket Assembly.....	29
Frame 7- Thread Holder Bracket Assembly.....	30
Frame 8- Handle Brackets Assembly.....	31
Frame 9- Caster Brackets Assembly.....	32
Frame 10- Belt Guard Assembly.....	33
Frame 11- Carry Handle Assembly.....	34
Frame 12- Binding Disk Bracket Assembly.....	35
Frame 13- Threads.....	36
Frame 14- Tools & Accessories.....	37
Frame 15- Cove Base Guide Assembly.....	38
Frame 16- Assorted Tape Folders & Brackets Assemblies.....	39
Frame 17- Light Assembly.....	40

BOND PRODUCTS INC

4511 WAYNE AVENUE

PHILADELPHIA PA 19144-3639

TOLL FREE PHONE 888-800-BOND (2663)

TOLL FREE FAX 800-582-9643

LOCAL PHONE 215-842-0200

LOCAL FAX 215-844-7175

EMAIL: sales@bondproducts.com

WEB: www.bondproducts.com

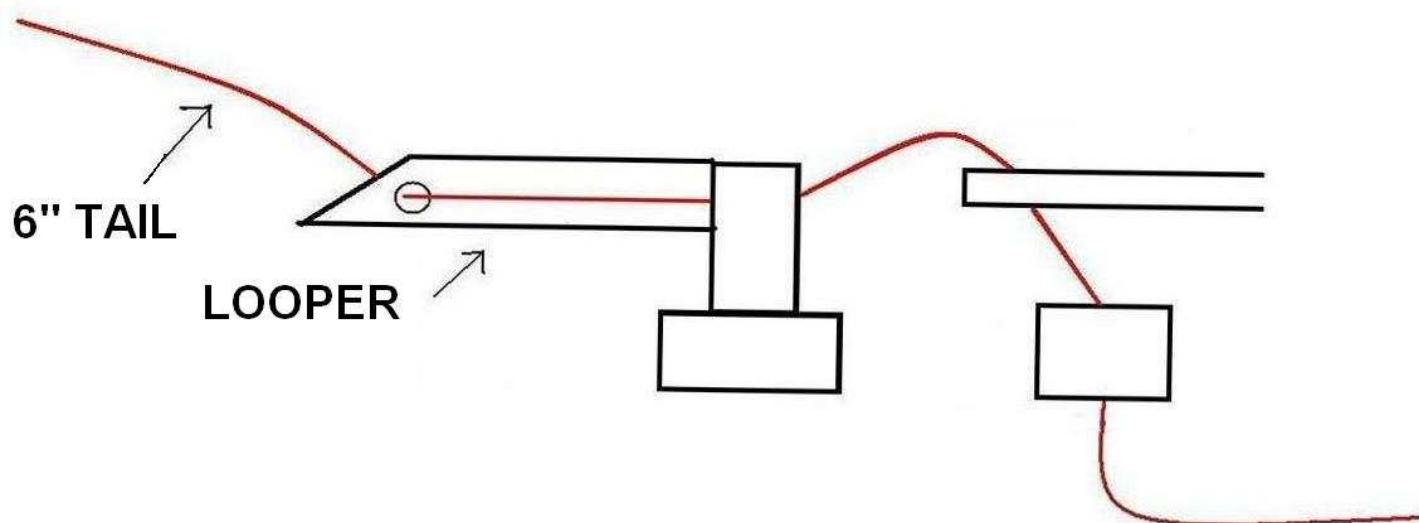
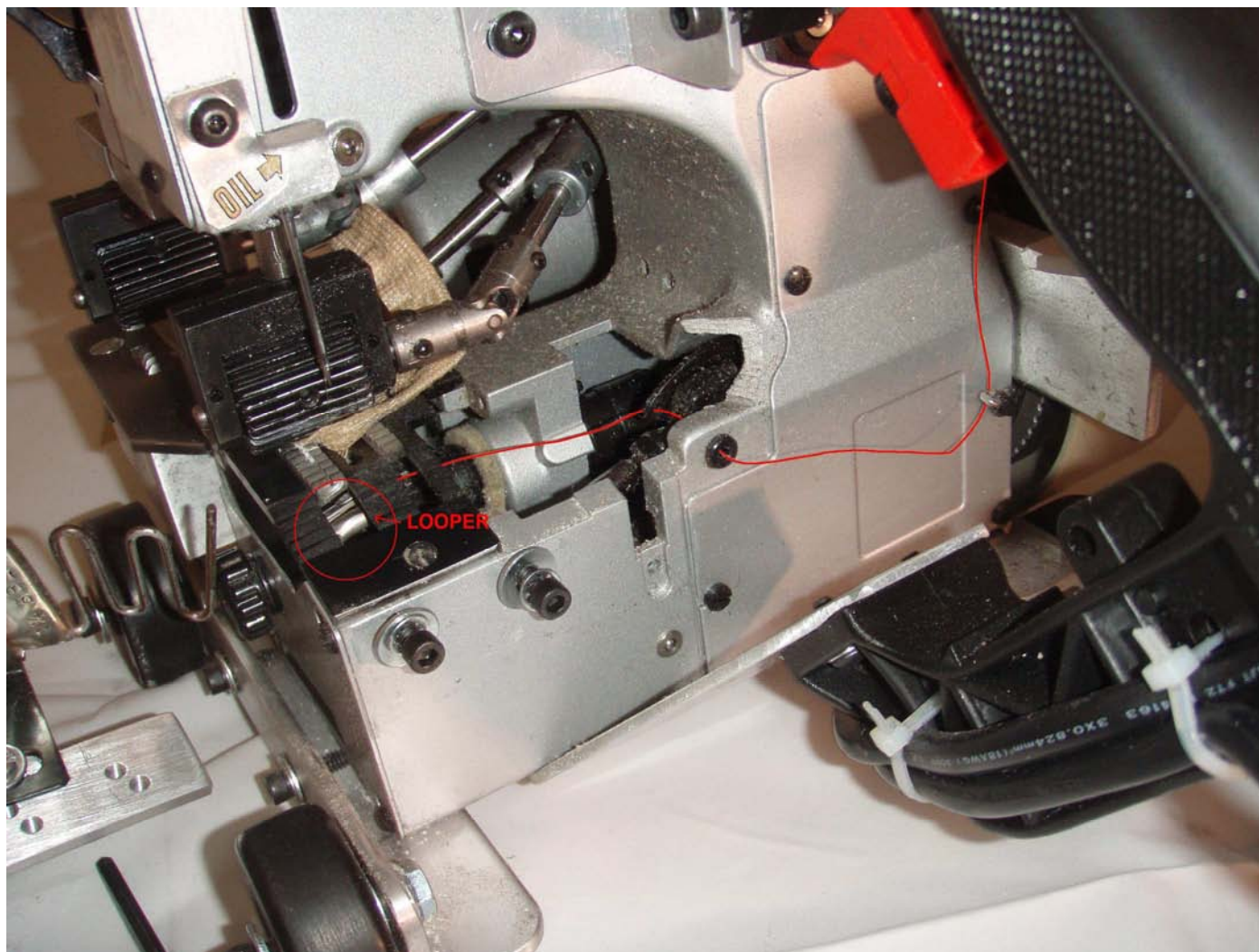
1. SPECIFICATIONS

Stitch type.....double thread chain stitch
Stitch length..... 8.5mm / 21/64 inches or
3 stitches per inch
Speed.....up to 30 feet per minute
adjustable variable speed
Needle.....UY143GS / DNX1-25/080
Threads:Needle = #75 Mono/clear H.D.
Looper = #69 Bonded Nylon; #138 Bonded Nylon
Drive motor.....110/125, 220/230/240V (AC)
12/24V (DC) 50/60Hz, Single phase

2. THE POINTS BEFORE OPERATION

- Oil the area through which thread passes, the tension disc, the thread guide, looper, etc.
(Note: An anticorrosive agent is applied to the machines at the factory, in order to prevent rusting. It is necessary to use oil to remove this agent or it may prevent the thread from passing smoothly.)
- Confirm that the machine has been threaded as per the instructions 3. in the manual.
- Confirm that the machine has been lubricated as per the instructions 4. in the manual.

3. NEEDLE & LOOPER THREADING



NEEDLE THREADING

To simplify the threading of the needle, just tie off both thread ends with a knot, continue pulling the thread through all the guides. Cut off the knot and continue threading through the needle eye. Leave a six inch plus tail beyond the needle eye, or...

1. Remove the dome from the old thread canister by twisting it counter-clockwise (Fig. 1A)
2. Turn the black knob on the top of the canister counter-clockwise.
3. Replace the empty canister with the new canister by aligning the threaded rod through the center holes of the canister.
4. Screw the black knob clockwise to the threaded rod. Tighten knob snugly.
5. Install the clear dome over the canister making sure that the thread is clear and won't get pinched as you twist the clear dome clockwise onto the canister base. (Fig. 1B)
6. Pull the thread from the top of the dome and follow the thread eyelets threading sequence: 1 through 6. (Fig. 1C)

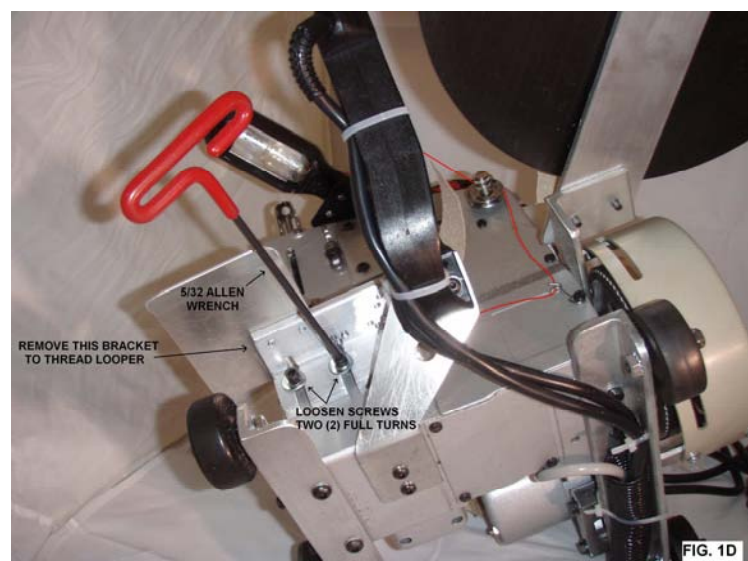


LOOPER THREADING

To simplify the threading of the looper, just tie off both thread ends with a knot, and then continue pulling the thread through the thread rod eye and the tensioner. Continue pulling the thread end through all eyelets and through both looper eyes. Leave a six inch tail past the looper, or...

1. Remove the black knob from the empty spool by twisting it counter-clockwise.
2. Replace the empty spool with the new spool. (Fig. 1B)
3. Screw the black knob clockwise to the threaded rod, tighten knob snugly.
4. Put thread end through the eye of the thread rod above the spool. (Fig. 1A)
5. Continue threading through the thread tensioner, then through the eyelet below it.
6. Remove the tape guide bracket by loosening the two allen screws with the 5/32 allen wrench two full turns only. (Fig. 1D)
7. Lift up on the folder bracket and set it aside. Put the thread through the front casting eyelet and through the take up eyelet, then through the looper eyes.
8. Leave a 6 inch tail past the looper.
9. Replace the tape folder bracket and tighten screws snugly.

You are now ready to bind.



4. OILING

Oiling of all moving parts is imperative before each operation of this machine. The oiling points are marked in red, spray lube the looper area after blowing off debris from the looper chamber. Use Bond spray lube, stock# 21325.

5. OPERATION

1. Hold the machine at the handle with your right hand.
2. Support the carpet with your left hand.
3. To start binding the carpet, align one corner of the carpet into the tape folder guide mouth, pull the trigger switch and slowly feed the carpet through the folder mouth. Let the machine move towards you without helping it pull through the carpet.
4. When you get to the other end of the carpet, continue binding on the tape until the carpet has passed the rear feed rollers/pullers. Cut off the tape ½" past the corner.
5. Continue binding the next side of the carpet.
6. Let the machine pull itself. If you pull the machine faster than its speed, the binder will mis-stitch or break the needle.
7. This machine has variable speed trigger switch. For more speed, squeeze the switch more; for slower speed, squeeze less. Turn and adjust speed control knob located at the trigger switch until the desired speed is found.

6. ADJUSTMENT

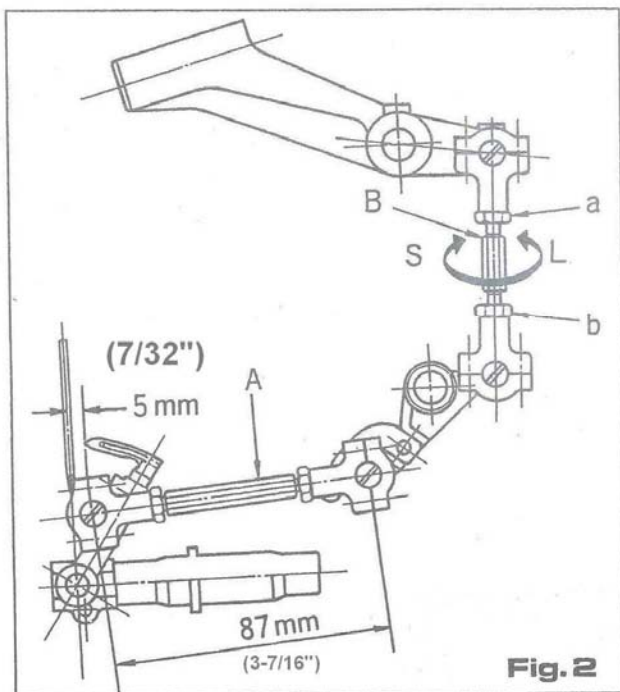
The machine has been properly adjusted before shipment from the factory. But if it needs re-adjustment for repair or replacement parts, proceed as follows; When adjusting, make sure that the electric wiring plug is removed from the consent.

6-1 Needle and Looper

Check the distance between needle center and looper edge. Turn the pulley by hand until the looper reaches its right furthest position, while keeping the clearance of 5mm between needle center and looper edge.

- 1) Confirm whether or not the distance between centers of ball joint (A) is being kept 87mm. Also pay special attention to the strict distance of 87mm, and if not, it will prevent you to adjust every part correctly.
- 2) Turn the pulley again by hand until looper reaches its left furthest position, while keeping the clearance of 5mm between needle center and looper edge to loose nuts (a) and (b) of joint rod (B). Fig. 2
In case the distance between centers is more than 5mm, turn joint rod (B) to "S" direction to decrease it.
In case the distance between centers is less than 5mm, turn joint rod (B) to "L" direction to increase it. Fig. 2

Make sure that the nuts (b) has left-handed thread.



6-2 Needle Height

When the looper moves left and right to turn pulley by hand, the looper and the needle shall be adjusted in such a way that the bottom of both holes will be entirely corresponded as shown in Fig. 3.

- 1) Check to make sure the needle is set in the needle bar as deep as it will go by loosening the needle bar clamping nut.
- 2) Make sure of setting a needle with its concave part facing correctly toward the looper when the needle is just going up from the lowest position.
- 3) Should it be necessary to change needle height, first remove the upper face plate.

To raise the needle bar....

Loosen the screw (a), lower the needle bar connection to obtain proper distance required and tighten it. Then, loosen the screw (b), raise the needle bar until the needle bar connection touches the needle bar connecting stud and tighten it.

To lower the needle bar....

Loosen the screw (b), lower the needle bar to obtain proper distance required and tighten it. Then, loosen the screw (a), fix the needle bar connection at the place where it touches the needle bar connecting stud and tighten it.

- 4) Check once again if the direction of concave part of needle is correct or not.

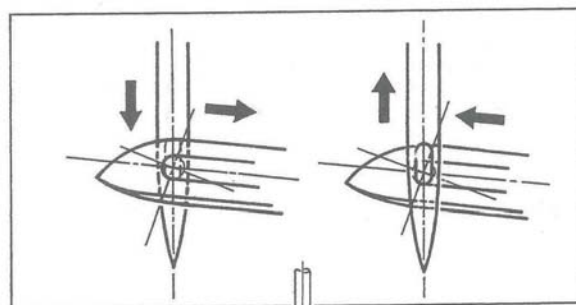


Fig. 3

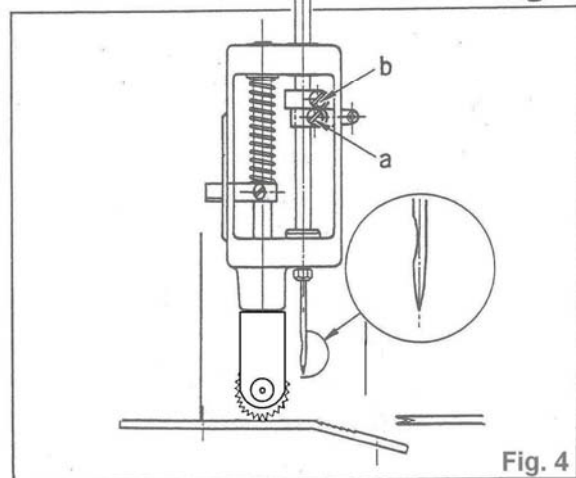


Fig. 4

6-3 Gap between Looper and Needle

Turn pulley by hand and fix eccentric cam so that the screw (a) may be horizontal position as shown in Fig. 5, while the looper is passing behind needle and the sharp point of looper is corresponded with needle center.

Afterwards, adjust the gap to be 0.05-0.1mm between looper and needle to confirm they do not clash with each other when the sharp point of looper is passing behind needle.

The adjustment of the gap shall be done by loosening screw (b) of looper oscillating arm.

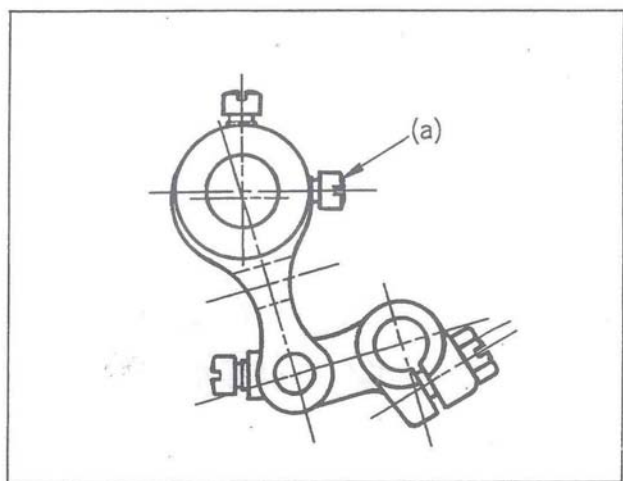


Fig. 5

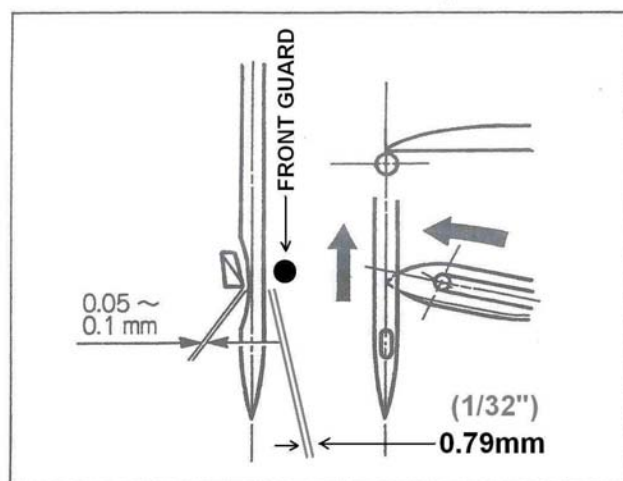


Fig. 6

6-4 Feed Dog Height (Fig. 7)

Adjust the height of feed dog to loosen screw (a) in order to obtain the most appropriate protrusion of 1.0- 1.2mm above the upper surface of throat plate after regulating the screw (b).

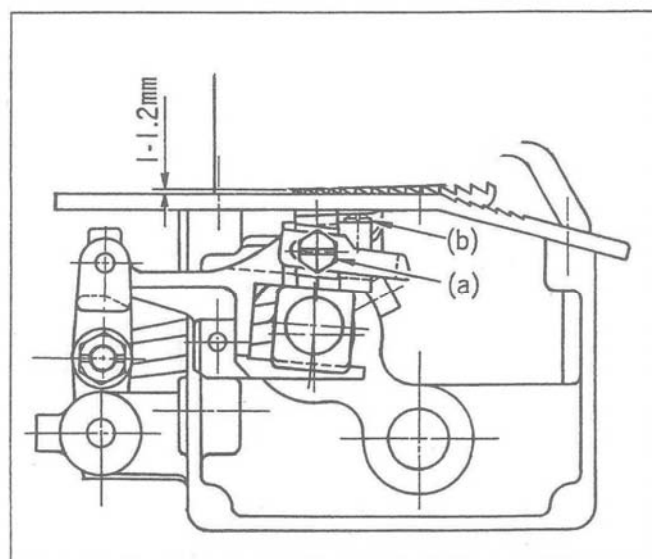


Fig. 7

6-5 Needle Guard Adjustment

Adjust the clearance between needle guard and needle to zero when the needle is just coming up from its lowest position as shown in Fig. 8 and tighten the screw (a).

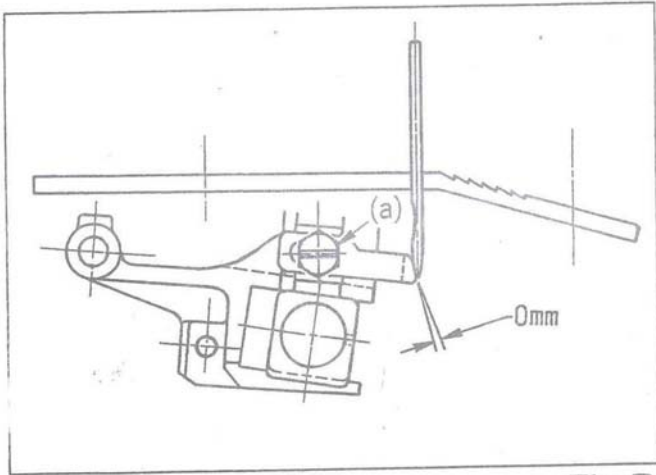


Fig. 8

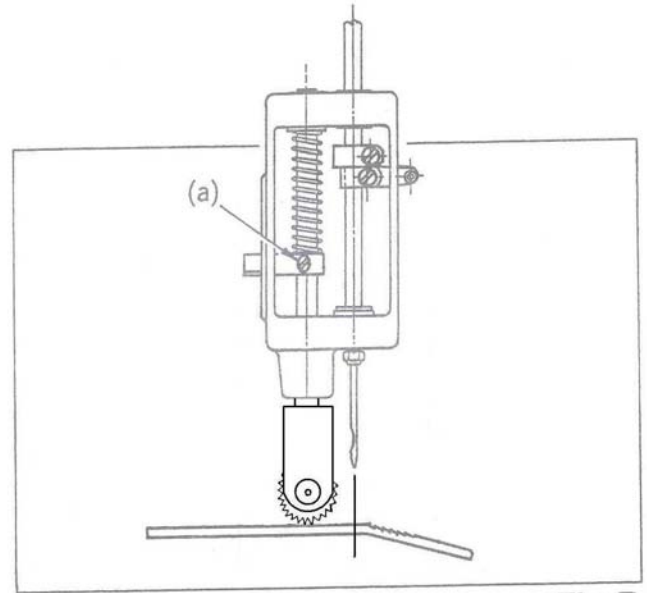


Fig. 9

PBB 4 x 4 only

When stitching thinner carpet lift up the rear puller, on the other hand when stitching thicker carpet, use both front and rear pullers.

[NOTES ON CARRYING AND STORAGE]

1. Carry the machine in a storage box.
2. After using of the machine, unplug, clean the dirt, oil all parts and then put it into a storage box. We suggest you to use a soft brush to clean the machine.

ORDERING PARTS

1. Description of each part and its stamp number is described in this parts list. Screws and nuts for parts are shown adjacent to the relevant parts. When ordering parts, describe clearly stamp number with its name of part.
 2. The parts which have no Ref. Number can not be delivered independently; always order it as an assembly.
 3. A set of assembled parts is represented by the stamp number of its main parts.
 4. The last figure on the parts stamp number advances on each improvement of the parts.
 5. Parts No. described in [] of Remarks means old parts No.
- * The parts list is subject to change without prior notice.

When ordering parts for this binder, always start with PBB then the part number(s).

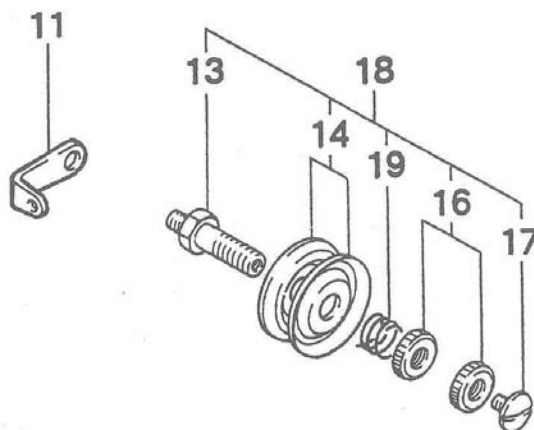
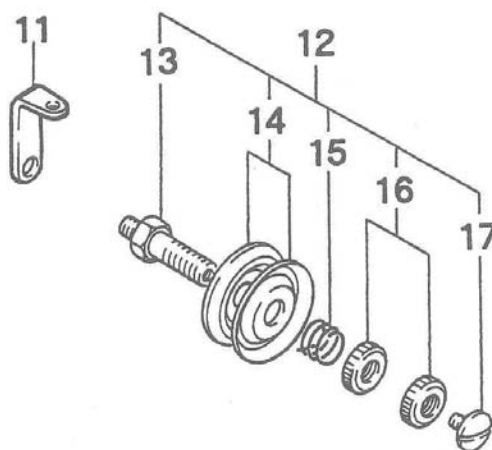
Example: PBB203081, Looper

PARTS LIST CONTENTS

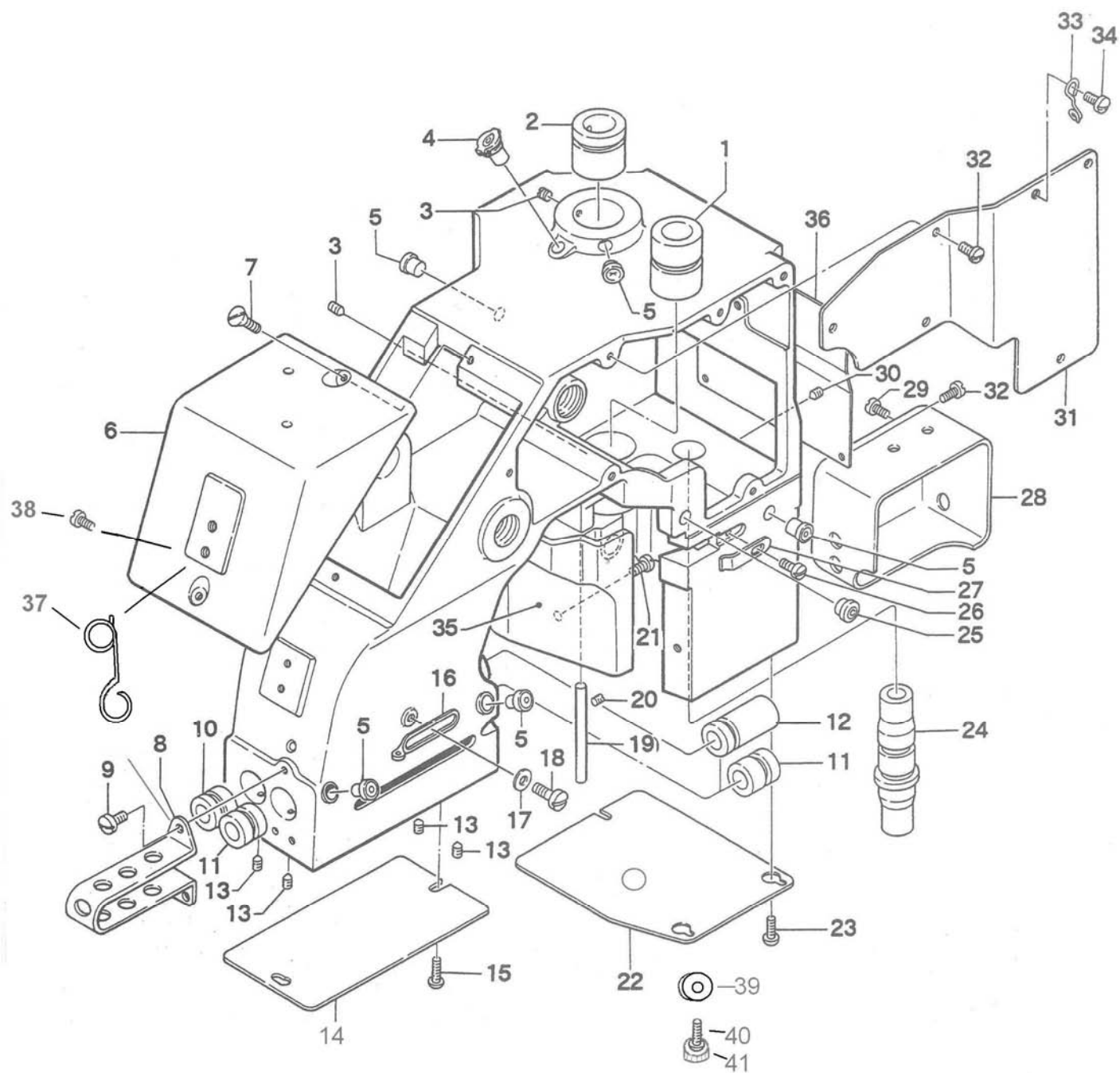
(1)	THREAD STAND AND THREAD TENSION PARTS.....	10
(2)	COVERS, BUSHINGS AND OILING PARTS.....	11 – 12
(3)	NEEDLE BAR, PRESSER BAR AND DRIVING PARTS.....	13 – 14
(4)	LOOPER DRIVING PARTS.....	15 – 16
(5)	FEED DRIVING AND THREAD CUTTER PARTS.....	17 – 18
(6)	MOTOR, SWITCH AND HANDLE PARTS (FOR TOTALLY ENCLOSED TYPE MOTOR).....	19 – 20

(1) THREAD STAND AND THREAD TENSION PARTS

Ref. No.	Part. No.	Description	Quantity	Remarks
11	245071	Thread Tension Eyelet	2	(13 – 17)
12	245081B	Thread Tension Assembly for Looper	1	
13	245081	Tension Post	2	
14	065261	Tension Disc	4	
15	205091	Tension Spring	1	
16	245091	Tension Nut	4	
17	9/64S40011	Screw for 245081	2	
18	245081A	Thread Tension Assembly for Needle	1	(13,14,16,17,19)
19	245101	Tension Spring	1	



(2) COVERS, BUSHINGS AND OILING PARTS

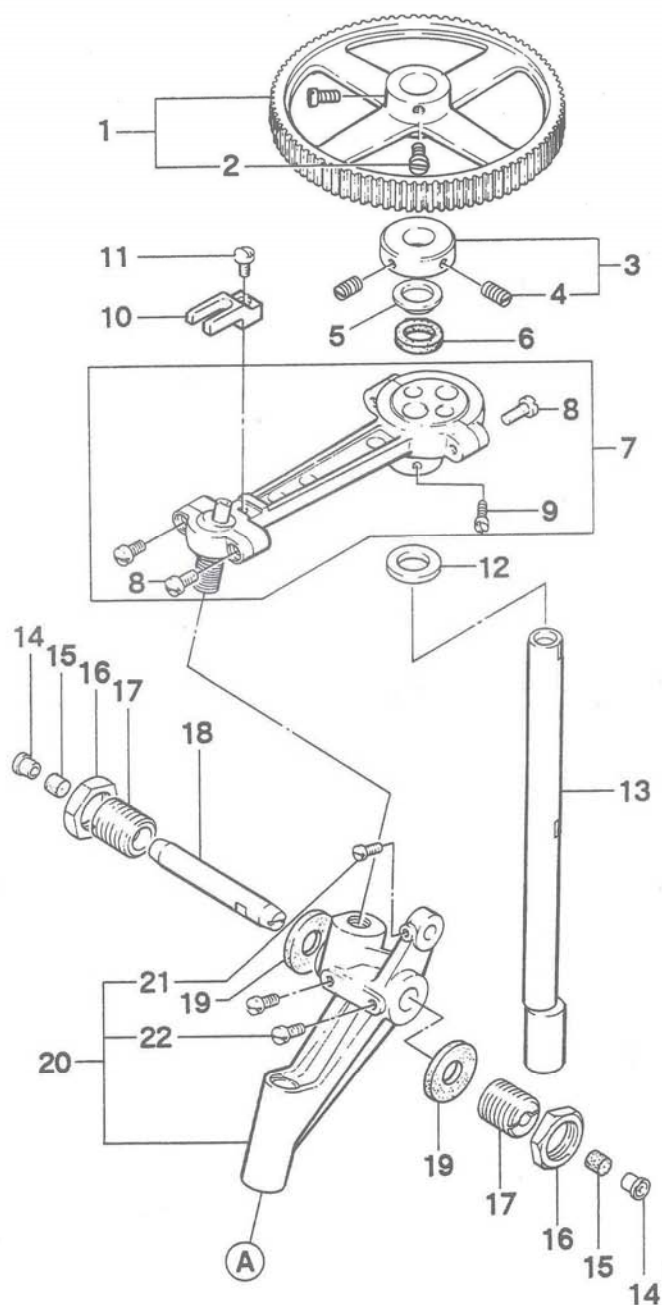
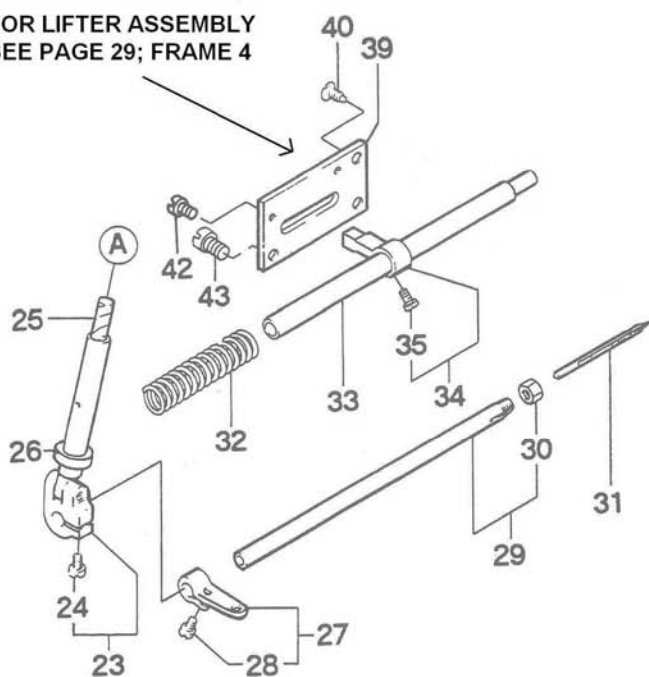


(2) COVERS, BUSHINGS AND OILING PARTS

Ref. No.	Part. No.	Description	Quantity	Remarks
1	241111	Main Shaft Bushing, front	1	
2	241122	Main Shaft Bushing, rear	1	
3	9/64S40502	Screw for 241122, 241111	2	
4	D01003	Oil Cup	1	
5	D01001	Push Oil Cup	5	
6	205191	Top Cover	1	
7	11/64S40007	Screw for 205191	2	
8	202091	Needle Bar Guard	1	
9	9/64S40005	Screw for 202091	3	
10	242211	Presser Bar Bushing, upper	1	
11	202051	Needle Bar Bushing	2	
12	242221	Presser Bar Bushing, lower	1	
13	9/64S40502	Screw for 242211, 202051, 242221	4	
14	205021	Face Plate	1	
15	9/64S40065	Screw for 205021	2	
16	P5011	Thread Controller for needle	1	
17	11/64W15103	Washer	1	
18	3/16S28002	Screw	1	
19	205011	Looper Cover Hinge Pin	1	
20	9/64S40501	Screw for 205011	1	
21	9/64S40058	Looper Cover Extension Lock Screw	1	
22	205032	End Cover	1	
23	9/64S40065	Screw for 205032	3	
24	203031	Looper Rocker Shaft Bushing	1	
25	P5161	Thread Guide Bushing for Looper	1	
26	9/64S40001	Looper Cover Extension Lock Screw	1	
27	P1091	Looper Cover Extension Lock Spring	2	
28	205071-1	Feed Rocker Cover (2 x 2)	1	
29	9/64S40005	Screw for 205071	2	
30	9/64S40502	Screw for 203031	1	
31	205042	Side Cover	1	
32	9/64S40005	Screw for 205042, 205201	9	
33	P5031	Thread Guide Wire for Looper	1	
34	11/64S40005	Screw for P5031	1	
35	205002	Cover	1	
36	205201	Inside Cover	1	
37	52A	Thread Guide	2	
38	9/64S40001	Screw for 52A	1	
39	10-24N	Lock Nut	1	
40	10-24S	Screw	1	
41	41KN	Knob	1	

(3) NEEDLE BAR, PRESSER BAR AND DRIVING PARTS

FOR LIFTER ASSEMBLY
SEE PAGE 29; FRAME 4

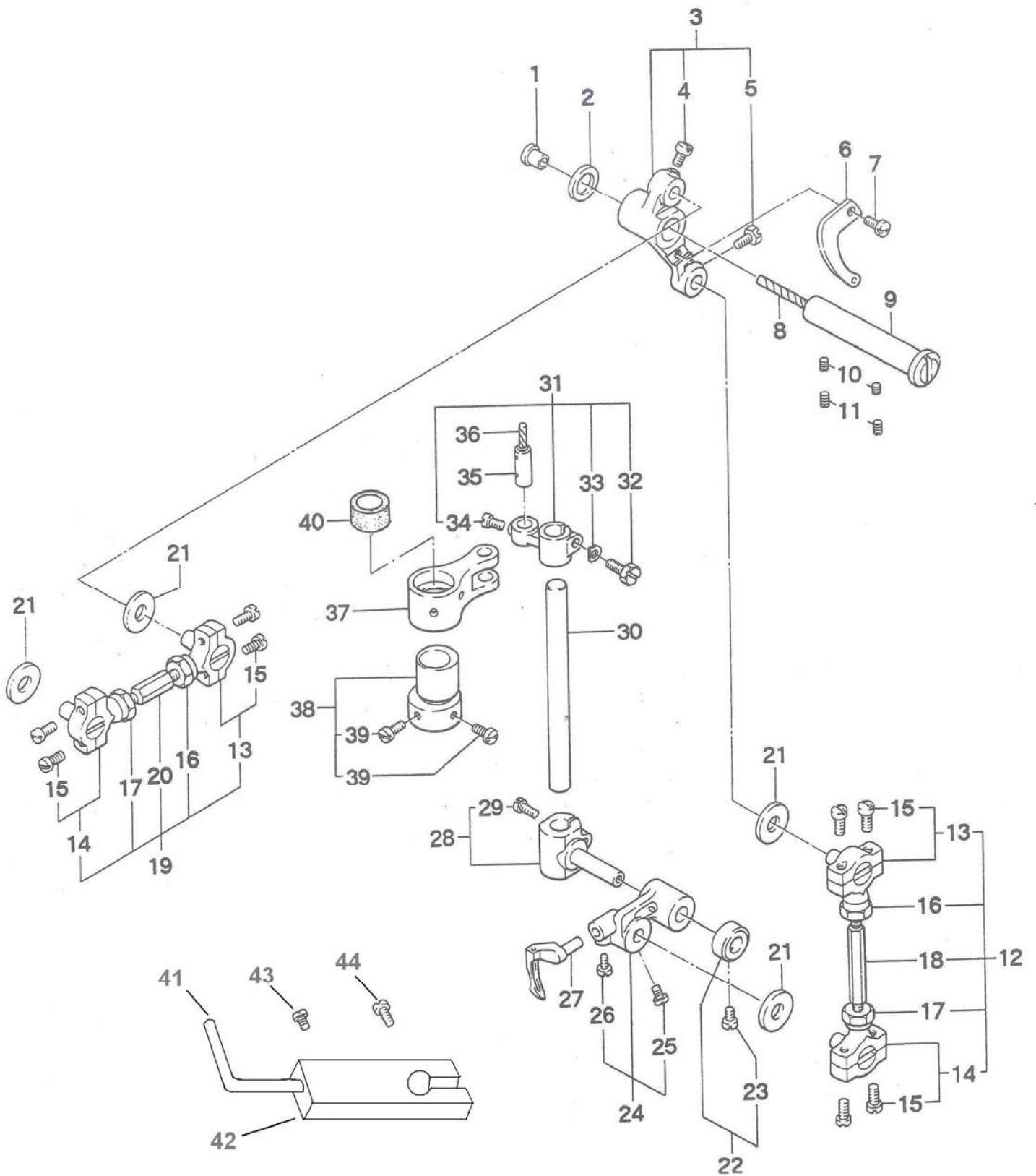


Ref. No.	Part. No.	Description	Quantity	Remarks
1	241091	Synchro Pulley	1	(2)
2	3/16S28001	Screw for 241091	2	
3	241131	Retaining Collar	1	(4)
4	11/64s40501	Screw for 241131	2	
5	241161	Spacer	1	
6	205131	Oil Felt	1	
7	202001A	Needle lever connecting rod Ass'y	1	(8, 9)
8	11/64S40090	Screw for Needle Lever Connecting rod cap	4	
9	11/64S40001	Screw for Eccentric Cam	2	

(3) NEEDLE BAR, PRESSER BAR AND DRIVING PARTS

Ref. No.	Part. No.	Description	Quantity	Remarks
10	076062	Ball Stud Guide Fork	1	
11	9/64S40003	Screw for 076062	1	
12	205131	Oil Felt	1	
13	201011	Main Shaft	1	
14	D01001	Push Oil Cup	2	
15	245411	Oil Felt	2	
16	5/8N18101	Nut for 242081	2	
17	242081	Adjusting Stud	2	
18	202041	Needle Lever Stud	1	
19	245231	Oil Felt	2	
20	202033A	Needle Lever Assembly	1	(21, 22)
21	11/64S40006	Screw for 013081B	1	
22	3/16S28005	Screw for 202033A	2	
23	202071A	Needle Bar Connection Assembly	1	(24)
24	11/64S40003	Screw for 202071A	1	
25	205171	Oil Felt	1	
26	245371	Oil Felt	1	
27	202081	Thread Take-Up for Needle	1	(28)
28	11/64S40002	Screw for 202081	1	
29	202061A	Needle Bar With Nut	1	(30)
30	P2412	Needle Lock Nut	1	
31	B01002	Needle (DNx1 #25)	1	
32	242191	Presser Foot Lifter	1	
33	202101	Presser Bar	1	
34	242181	Presser Bar Connection	1	(35)
35	11/64S40003	Screw for 242181	1	
39	242171	Presser Foot Lifter Base	1	
40	11/64S40007	Screw for 242171	2	
42	9/64S40001	Presser Foot Lifter Stopper Screw	1	
43	11/64S40002	Screw for 242171	1	

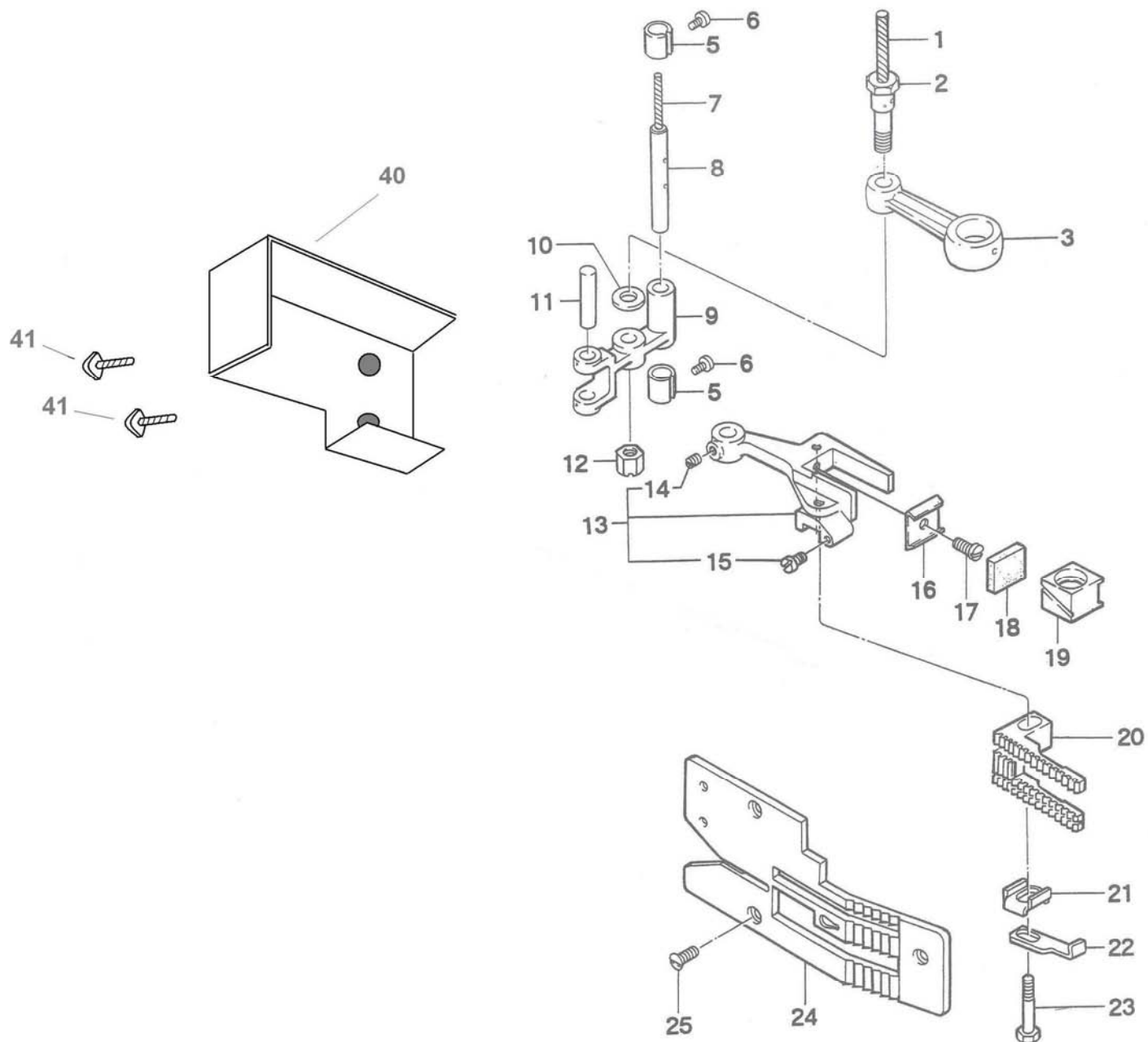
(4) LOOPER DRIVING PARTS



(4) LOOPER DRIVING PARTS

Ref. No.	Part. No.	Description	Quantity	Remarks
1	D01001	Push Oil Cup	1	
2	P3051	Spacer	1	
3	203091	Looper Bell Crank	1	(4 , 5)
4	11/64S40049	Screw for 013081B	1	
5	11/64S40049	Screw for 203121A	1	
6	203111	Thread Take-Up for Looper	1	
7	9/64S40004	Screw for 203111	1	
8	205211	Oil Felt	1	
9	203101	Looper Bell Crank Hinge Stud	1	
10	15/64S28522	Screw for 203101	2	
11	15/64S28511	Screw for 203101	2	
12	203121A	Ball Joint Rod Assembly	1	(13 ~ 18)
13	013042B	Ball Joint Assembly	2	(15)
14	013062A	Ball Joint Assembly	2	(15)
15	9/64S40061	Screw for Ball Joint	8	
16	11/64N40203L	Nut for Ball Joint Rod	2	
17	11/64N40203	Nut for Ball Joint Rod	2	
18	203121	Ball Joint Rod	1	
19	013081B	Ball Joint Rod Assembly	1	(13 ~ 17, 20)
20	013081	Ball Joint Rod	1	
21	9/32W20108	Fiber	4	
22	203071	Looper Rocker Collar	1	(23)
23	11/64S40076	Screw for 203071	1	
24	203061	Looper Rocker	1	(25, 26)
25	11/64S40002	Screw for 203121A	1	
26	11/64S40002	Screw for 203081	1	
27	203081	Looper	1	
28	203051	Looper Rocker Frame	1	(29)
29	11/64S40089	Screw for 203051	1	
30	203041	Looper Rocker Shaft	1	
31	203021	Looper Rocker Shaft Arm	1	(32 ~ 34)
32	11/64S40089	Screw for P2071	1	
33	11/64W10104	Washer for 203021	1	
34	11/64S40001	Screw for P2071	1	
35	P2071	Link Pin	1	
36	205141	Oil Felt	1	
37	203011	Looper Avoid Link	1	
38	203001	Looper Avoid Eccentric	1	(39)
39	11/64S40001	Screw for 203001	2	
40	205181	Oil Felt	1	
41	41302	Thread Loop Retainer	1	
42	41303	Thread Loop Pusher Holder	1	
43	41304	Screw, 6/40 x 3/8"- 10-32 x 3/16	1	
44	41305	Screw, 8/32 x 1/2"	1	

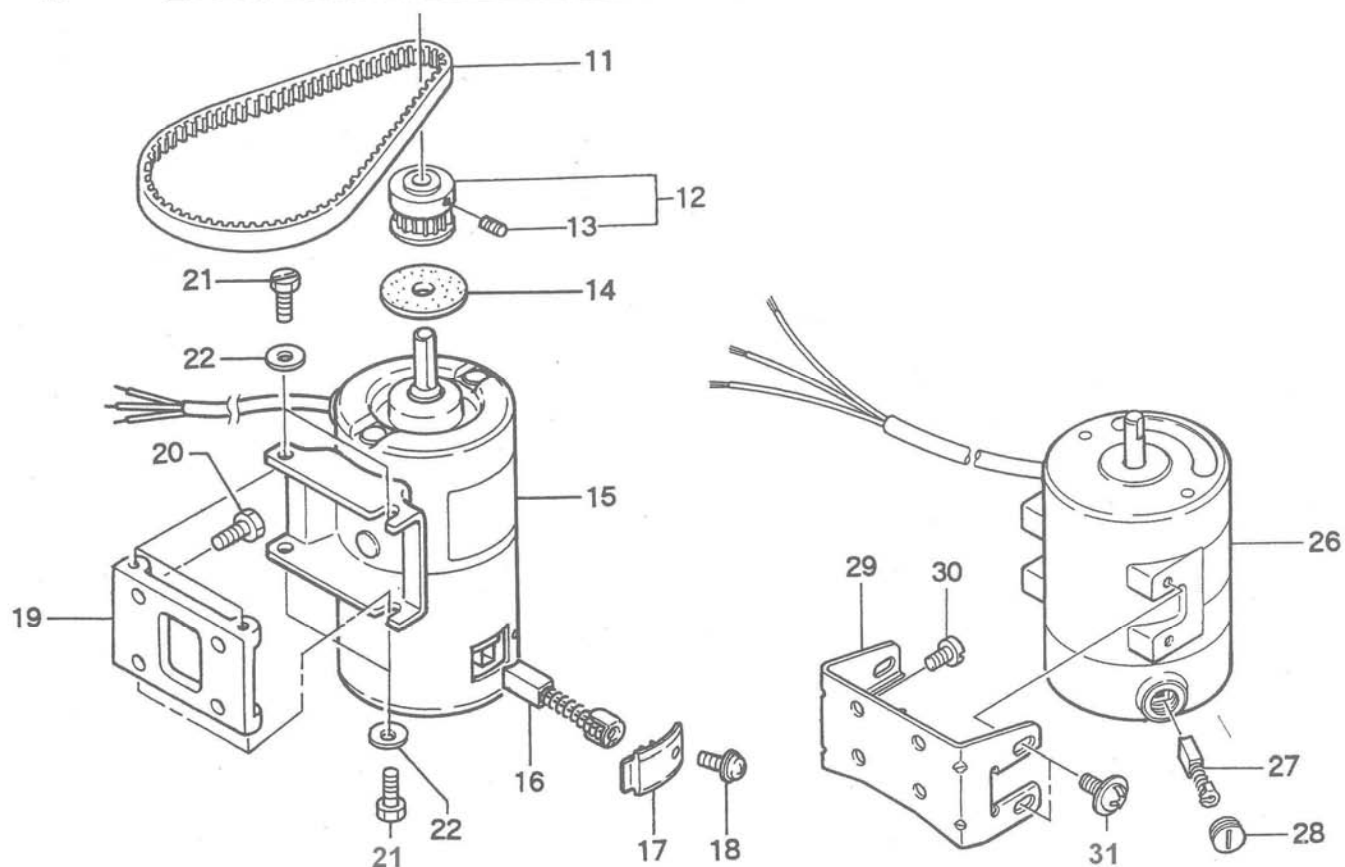
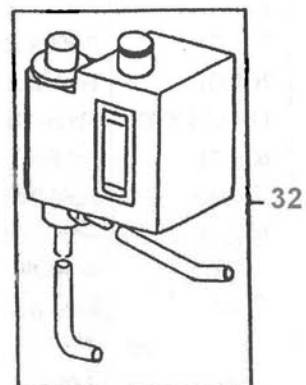
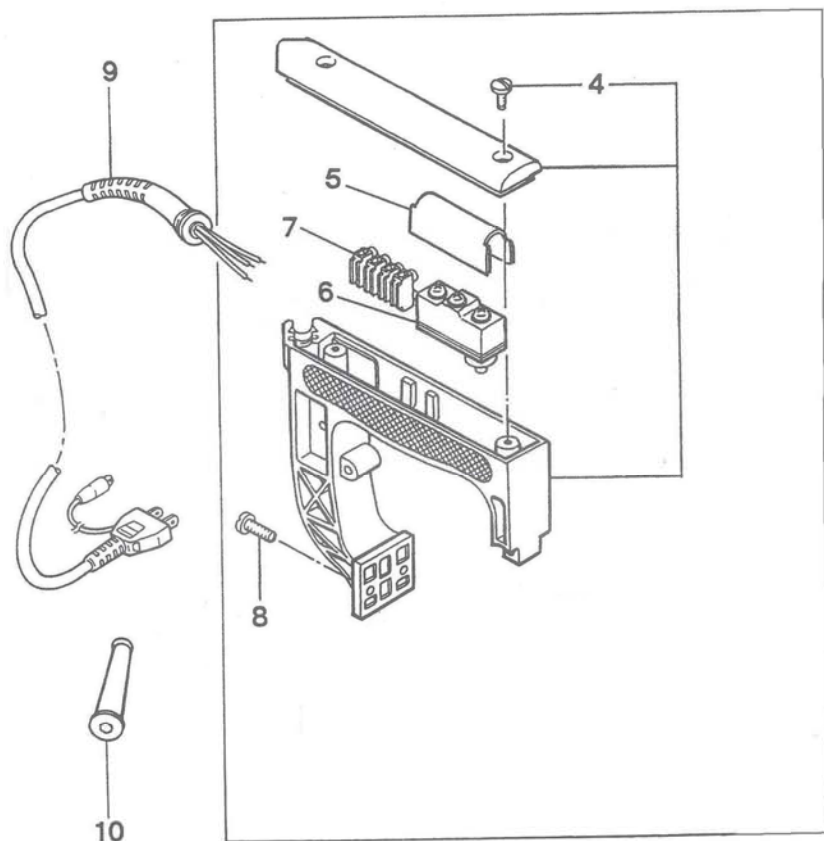
(5) FEED DRIVING AND THREAD CUTTER PARTS



(5) FEED DRIVING AND THREAD CUTTER PARTS

Ref. No.	Part. No.	Description	Quantity	Remarks
1	205161	Oil Felt	1	(14, 15)
2	204041	Feed Rocker Connecting Rod Pin	1	
3	204031	Feed Rocker Connecting Rod	1	
5	204001	Feed Rocker Shaft Bushing	2	
6	11/64S40002	Screw for 204001	2	
7	205151	Oil Felt	1	
8	204021	Feed Rocker Shaft	1	
9	204011	Feed Rocker	1	
10	P4031	Washer for 204041	1	
11	P4101	Feed Bar Shaft	1	
12	15/64N28208	Nut for 204041	1	
13	204062	Feed Bar	1	
14	11/64S40502	Screw for P4101	1	
15	9/64S40001	Feed Dog Height Adjusting Screw	1	
16	205111	Lubricating Felt Holder	1	
17	1/8S44009	Screw for 205111	1	
18	205121	Lubricating Felt	1	
19	204051	Feed Lifting Block	1	
20	204071	Feed Dog	1	
21	P4161	Needle Guard Holder	1	
22	204081	Needle Guard	1	
23	11/64S40012	Screw for 204071	1	
24	204091	Throat Plate	1	
25	9/64S40043	Screw for 204091	3	
40	205071-2	Feed Rocker Cover (4 x 4)	1	
41	9/64S40005	Screw for 205071	2	

(6) MOTOR, SWITCH AND HANDLE PARTS (FOR TOTALLY ENCLOSED TYPE MOTOR)



(6) MOTOR, SWITCH AND HANDLE PARTS (FOR TOTALLY ENCLOSED TYPE MOTOR)

Ref. No.	Part. No.	Description	Quantity	Remarks
1	241024CS	Handle Assembly	1	(2, 5 ~ 7)
2	241024C	Handle Assembly	1	(3, 4)
3	241024	Handle	1	(4)
4	9/64S40011	Screw for 241024C	2	
5	245132	Micro Switch Cover	1	
6	C02001	Micro Switch (Z-15GK655-B)	1	
	C02006	Micro Switch (X-10GD-B) for DC Motor	1	
7	C05008	Flexible Terminal Block (ML-SK-1,4P)	1	
8	15/64S28021	Screw for 241024C	2	
9	C04001	Cabtyre Cord, with Plug (Standard Type)	1	
	C04003	Cabtyre Cord, with Plug (American Type)	1	
	C04004	Cabtyre Cord, with Plug (British Type)	1	
	C04005	Cabtyre Cord, with Plug (German Type)	1	
	C04006	Cabtyre Cord, with Plug (French Type)	1	
	C04007	Cabtyre Cord, with Plug (Australian Type)	1	
	C04009	Cabtyre Cord, with Plug (for DC Motor)	1	
10	211151	Rubber Bushing (for C04003-C04007)	1	
11	F01002	Timing Belt 180XL	1	(15)
12	241082	Motor Pulley	1	(13)
13	11/64S40504	Screw for 241081	2	
14	C07005	Rubber Ring	1	
15	C01028	Universal Motor (220V-90W)	1	(15 ~ 18)
	C01029	Universal Motor (240V-90W)	1	(15 ~ 18)
	C01030	Universal Motor (110V-90W)	1	(15 ~ 18)
16	C08004	Carbon Brush for AC Motor	2	
	C08005	Carbon Brush for DC Motor	2	
17	C07003	Cap	2	
18	4S3x6-W	Screw	2	
19	241072	Motor Base B	1	
20	15/64S28004	Screw for 241072	4	
21	11/64S40075	Screw for Motor	4	
22	11/64W10101	Washer for Motor	4	
26	C01035	Universal Motor (220V) NSM-2	1	(27, 28)
	C01036	Universal Motor (230V ~ 240V) NSM-1	1	(27, 28)
	C01037	Universal Motor (110V ~ 120V) NSM-3	1	(27, 28)
	C01023	Universal Motor (UL110V ~ 120V)	1	(27, 28)
27	C08008	Carbon Brush	1	
28	C07004	Cap	1	
29	241075	Motor Base	1	
30	15/64S28004	Screw	4	
31	13S5x10	Screw for Motor	4	
32	3201224	Pump Oiler with Oil Tube	1	

NUMERICAL INDEX OF PARTS

PART NO.	PAGE	PART NO.	PAGE	PART NO.	PAGE
013042B	13-13	205042	9-31	245231	10-19
013062A	13-14	205071-1	9-28	245371	11-26
013081	13-20	205071-2	15-40	245411	10-15
013081B	13-19	205091	7-15		
065261	7-14	205111	9-19; 15-16	P1091	9-27
				P2071	13-35
076062	11-10	205121	15-18	P2412	11-30
201011	11-13	205131	10-6; 11-12	P3051	13-2
202001A	10-7	205141	13-36		
202033A	11-20	205151	15-7	P4031	15-10
202041	11-18	205161	15-1	P4101	15-11
				P4161	15-21
202051	9-11	205171	11-25	P5011	9-16
202061A	11-29	205181	13-40	P5031	9-33
202071A	11-23	205191	9-6		
202081	11-27	205201	9-36	P5161	9-25
202091	9-8	205211	13-8		
202101	11-33	211151	17-10		
203001	13-38	241024	17-3		
203011	13-37	241024C	17-2		
203021	13-31	241024CS	17-1		
		241072	17-19		
203031	9-24				
203041	13-30	241075	17-29		
203051	13-28	241082	17-12		
203061	13-24	241091	10-1		
203071	13-22	241111	9-1		
		241122	9-2		
203081	13-27				
203091	13-3	241131	10-3		
203101	13-9	241161	10-5		
203111	13-6	242081	11-17		
203121	13-18	242171	11-39		
		242181	11-34		
203121A	13-12				
204001	15-5	242191	11-32		
204011	15-9	242211	9-10		
204021	15-8	242221	9-12		
204031	15-3	245071	7-11		
		245081	7-13		
204041	15-2				
204051	15-19	245081A	7-18		
204062	15-13	245081B	7-12		
204071	15-20	245091	7-16		
204081	15-22	245101	7-19		
		245132	17-5		
204091	15-24				
205002	9-35				
205011	9-19				
205021	9-14				
205032	9-22				

OTHER

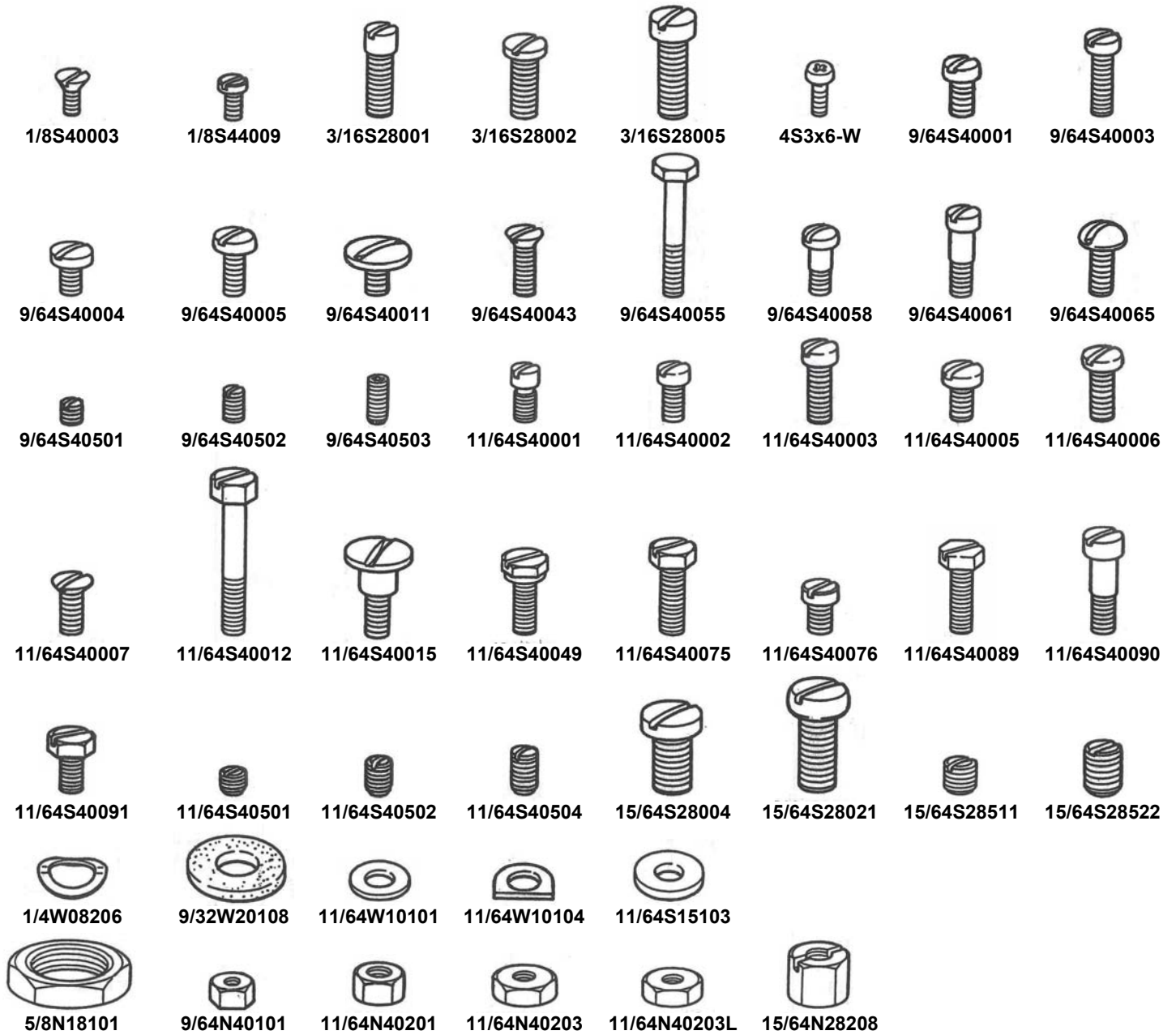
B01002	11-31
C01023	17-26
C01028	17-15
C01029	17-15
C01030	17-15
C01035	17-26
C01036	17-26
C01037	17-26
C02001	17-6
C02006	17-6
C04001	17-9
C04003	17-9
C04004	17-9
C04005	17-9
C04006	17-9
C04007	17-9
C04009	17-9
C05008	17-7
C07003	17-17
C07004	17-28
C07005	17-14
C08004	17-16
C08005	17-16
C08008	17-27

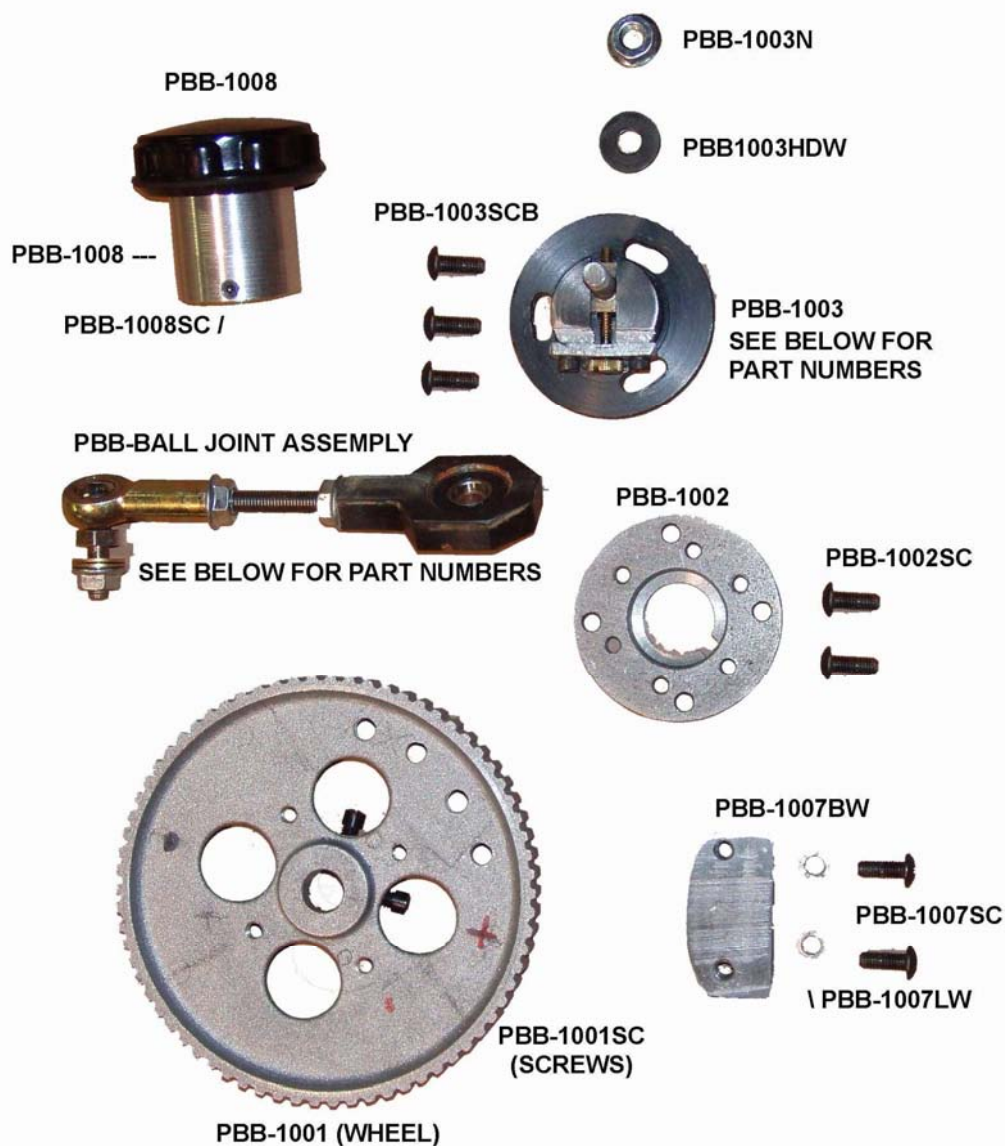
NUMERICAL INDEX OF PARTS

PART NO.	PAGE	PART NO.	PAGE	PART NO.	PAGE
D01001	9-5; 11-14; 13-1	11/64S40076	13-23	3201224	17-32
		11/64S40089	13-29, 32		
D01003	9-4	11/64S40090	10-8	41KN	9-41
F01002	17-11	11/64S40501	10-4		
		11/64S40502	15-14	41302	13-41
SCREW				41303	13-42
		11/64S40504	17-13	41304	13-43
1/8S44009	15-17	3/16S28001	10-2	41305	13-44
		3/16S28002	9-18		
9/64S40001	9-26, 38; 11-42; 15-15	3/16S28005	11-22	52A	9-37
		15/64S28004	17-20, 30		
9/64S40003	11-11	15/64S28021	17-8		
9/64S40004	13-7	15/64S28511	13-11		
9/64S40005	9-9, 29, 32; 15-41	15/64S28522	13-10		
		4S3x6-W	17-18		
9/64S40011	7-17; 17-4	10-24S	9-40		
9/64S40043	15-25				
9/64S40058	9-21	13S5x10	17-31		
9/64S40061	13-15				
		NUT			
9/64S40065	9-15, 23				
9/64S40501	9-20	11/64N40203	13-17		
9/64S40502	9-13, 13, 30	11/64N40203L	13-16		
		15/64N28208	15-12		
11/64S40001	10-9; 13-34, 39	5/8N18101	11-16		
		10-24N	9-39		
11/64S40002	11-28, 43; 13-25, 26; 15-6	WASHER			
11/64S40003	11-24, 35	11/64W10101	17-22		
11/64S40005	9-34	11/64W10104	13-33		
		11/64W15103	9-17		
		9/32W20108	13-21		
11/64S40006	11-21				
11/64S40007	9-7, 11-40				
11/64S40012	15-23				
11/64S40049	13-4, 5				
11/64S40075	17-21				

SCREW, NUT & WASHER

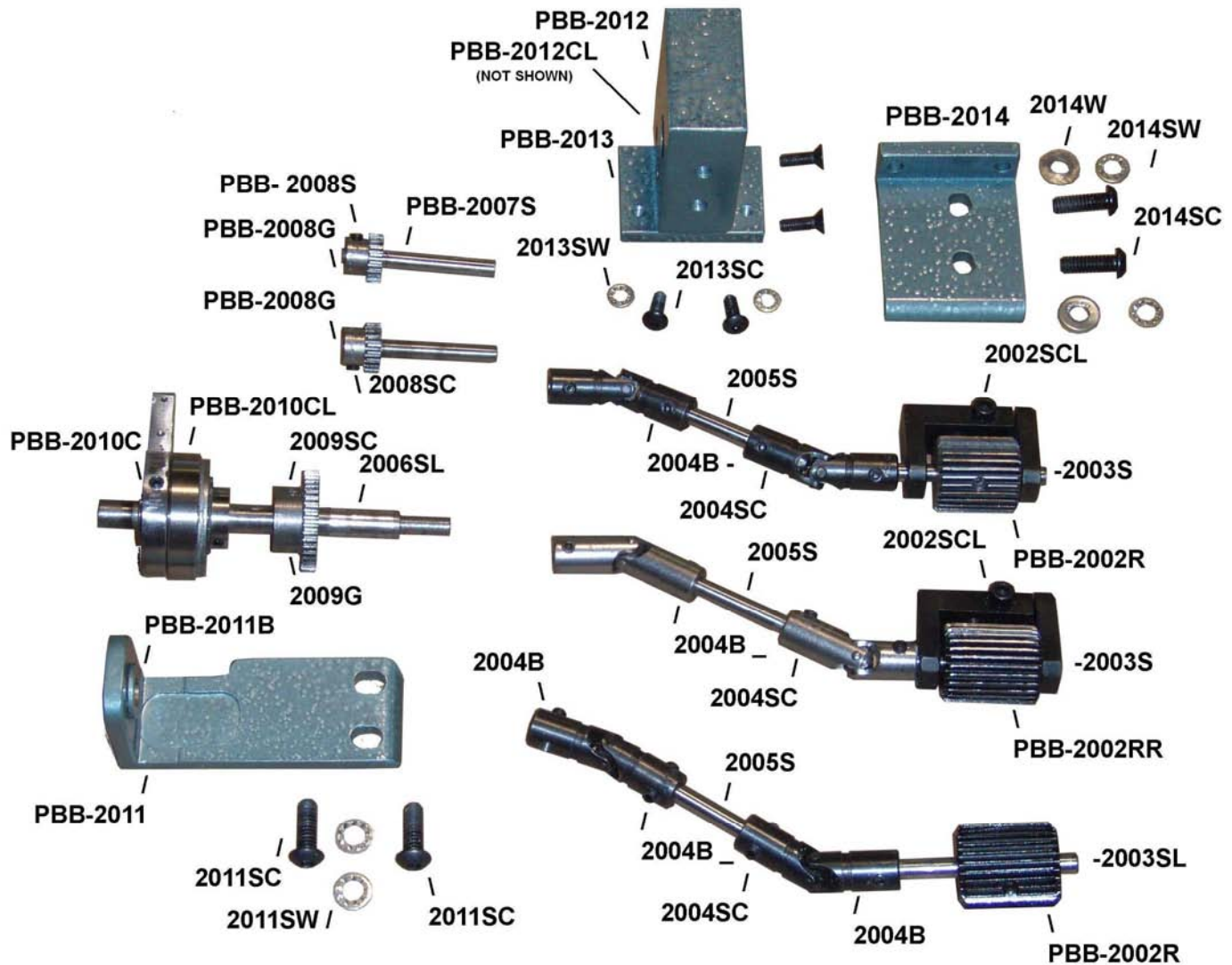
FULL SIZE



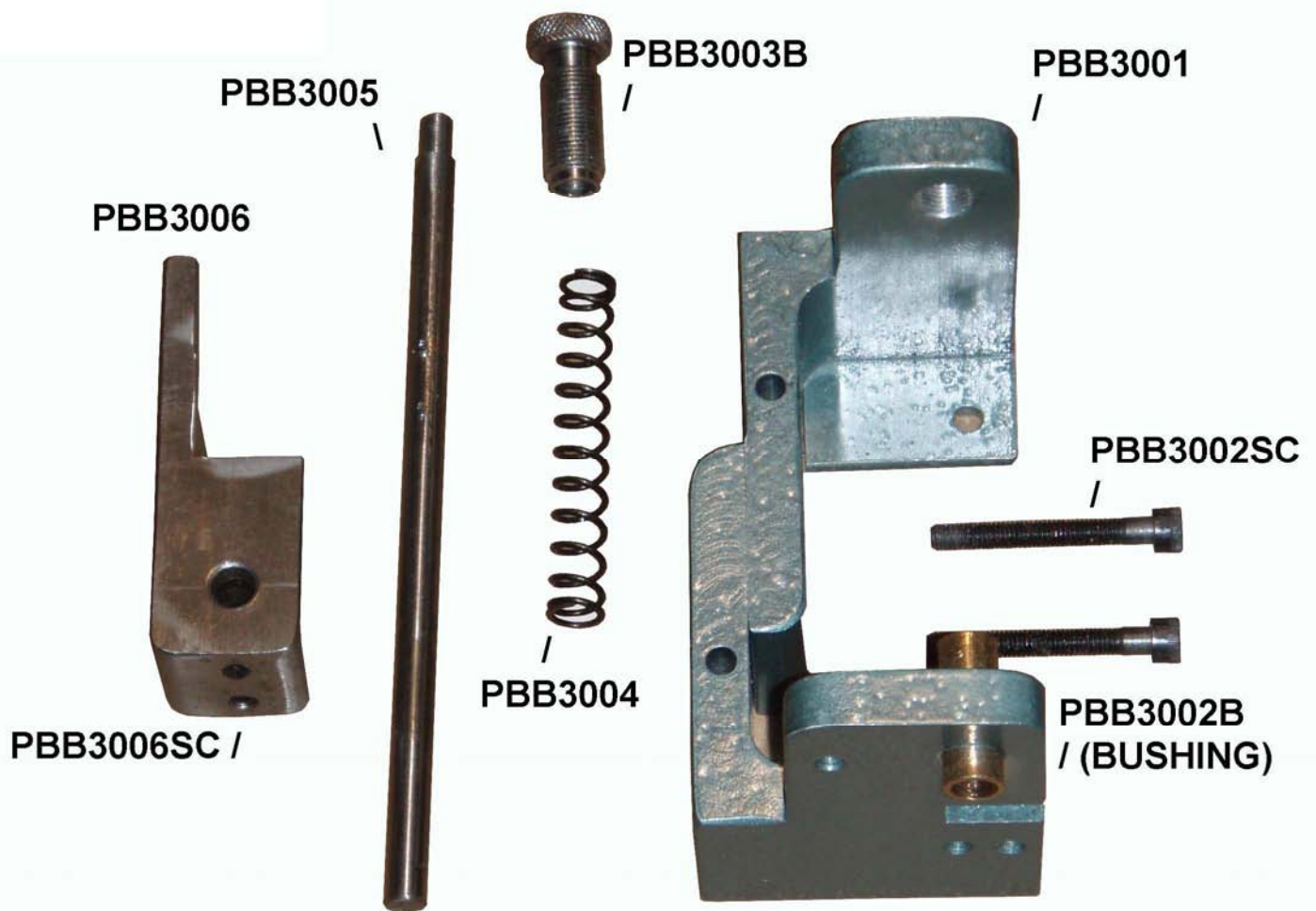


PBB1001	Belt Pulley
PBB1001SC	Belt Pulley Screw (2)
PBB1002	Back Plate for PBB1003
PBB1002SC	Flat Screw (2)
PBB1003	Puller Eccentric
PBB1003SC1	Adjusting Screw
PBB1003SC2	Screw for PBB1003 (2)
PBB1003A	Adjusting Slide Block Stud
PBB1003P	Stop Plate
PBB1003HDW	Thick Washer (2)
PBB1003N	Lock Nut
PBB1003SCB	Adjusting Screw (3)
PBB1004C	Cam Crank

PBB1004BR	Ball Bearing
PBB1004BU	Bushing
PBB1005BU	Ball Joint
PBB1005W	Washer (2)
PBB1005N	Lock Nut
PBB1006R	Adjusting Rod
PBB1006N	Lock Nut (2)
PBB1007BW	Balance Weight
PBB1007LW	Lock Washer
PBB1007SC	Screw (2)
PBB1008	Handwheel Shaft
PBB1008HW	Handwheel
PBB1008SC	Screw (3)



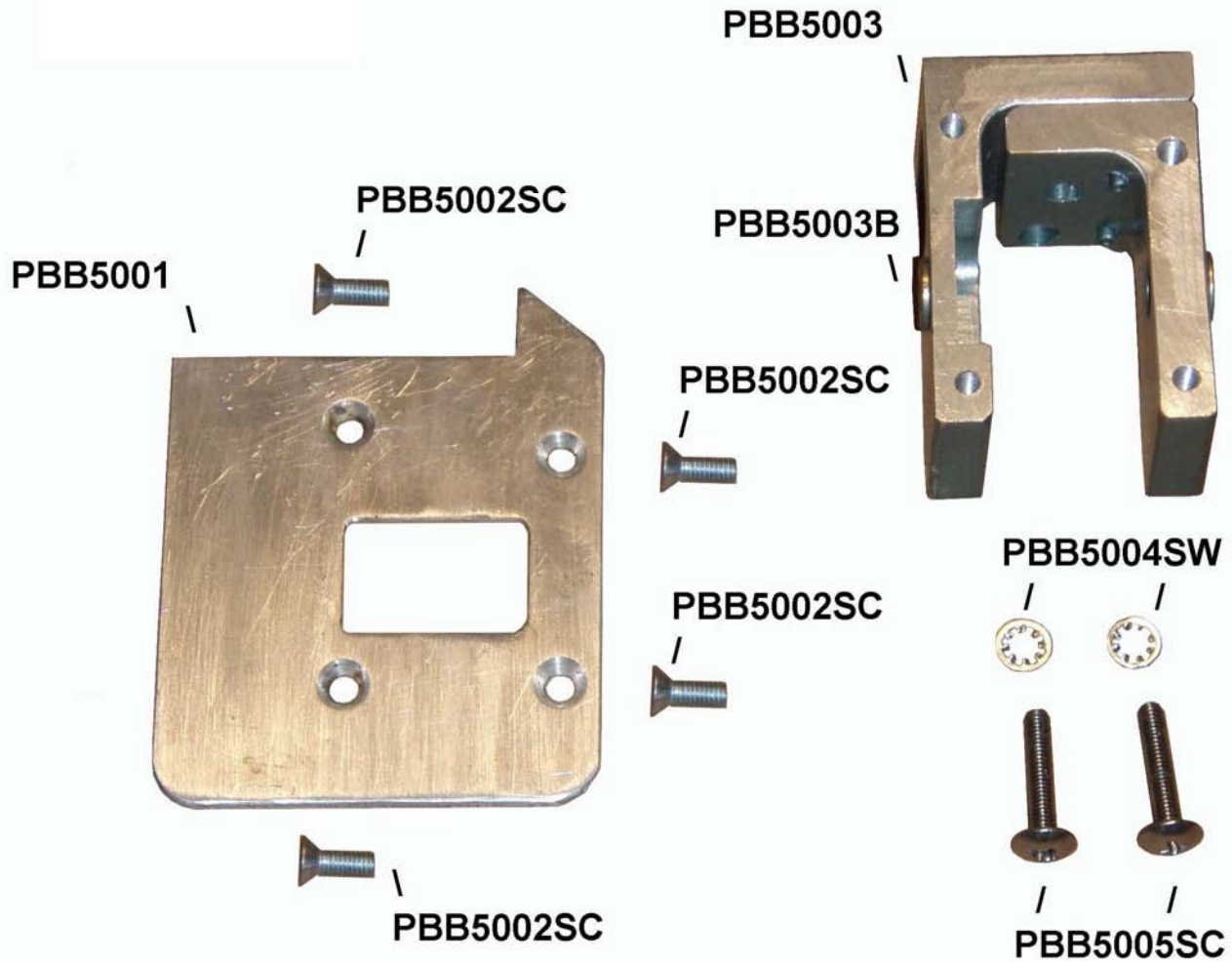
PBB2001FY	Feed Roller Yoke, Front	PBB2010CS	Bearing
PBB2001RY	Feed Roller Yoke, Rear	PBB2010CL	Clutch
PBB2002SCL	Feed Roller Yoke, Screw	PBB2010CL	Clutch Crank
PBB2002SCL	Feed Roller Yoke, Screw	PBB2010SC	Sew Screw
PBB2002R	Feed Roller, Front Lower Rear	PBB2011	Clutch Support Bracket
PBB2002RR	Feed Roller, Upper Rear Only	PBB2011B	Clutch Support Bracket Bushing
PBB2003S	Feed Roller Yoke Shaft	PBB2011SC	Clutch Support Bracket Screw (2)
PBB2003SL	Feed Roller Yoke, Shaft Lower Rear	PBB2001SW	Spur Lock Washer (2)
PBB2004B	Universal Ball Joint	PBB2012	Gear Box
PBB2004SC	Universal Ball Joint Screw	PBB2012CL	Clutch Bearings
PBB2005S	Universal Ball Joint Extension Rod	PBB2012SC	Screw (2)
PBB2006SL	Clutch Gear Shaft	PBB2013	Gear Box Base
PBB2007S	Gear Shaft	PBB2013SW	Spur Lock Washer (2)
PBB2008SL	Gear Screw	PBB2014	Gear Box Support Bracket
PBB2008G	Gear Small	PBB2014SC	Screw (2)
PBB2009G	Gear Large	PBB2014SW	Spur Lock Washer (2)
PBB2009SC	Gear Screw	PBB2014W	Washer (2)



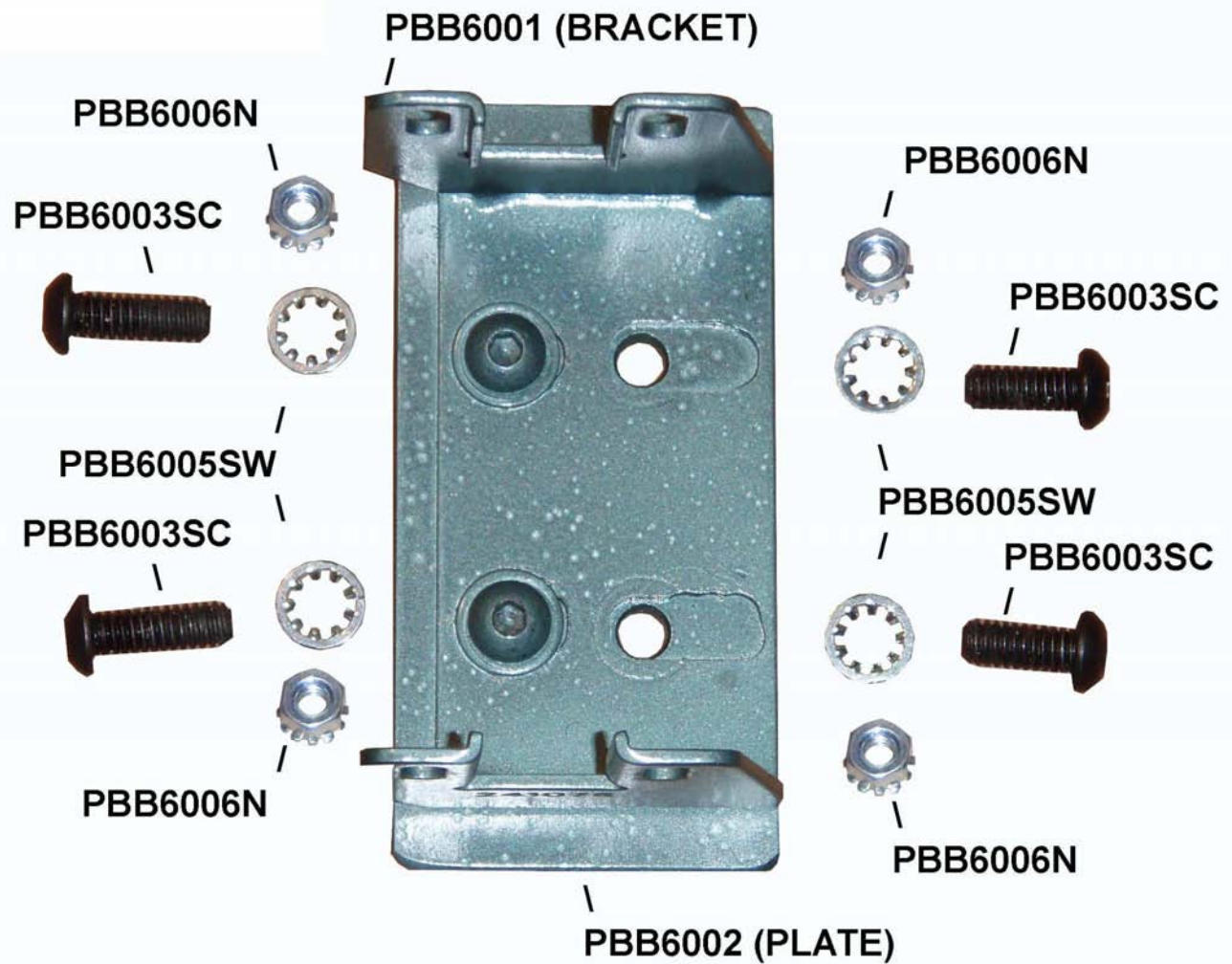
PBB3001	Back Puller Frame
PBB3002SC	Lower Bushing
PBB3002SC	Long Bolt (2)
PBB3002B	Upper Adjusting Bushing
PBB3004	Presser Bar Spring
PBB3005	Presser Bar Rear
PBB3006	Lifter Bracket
PBB3006SC	Lifter Bracket Set Screw (2)



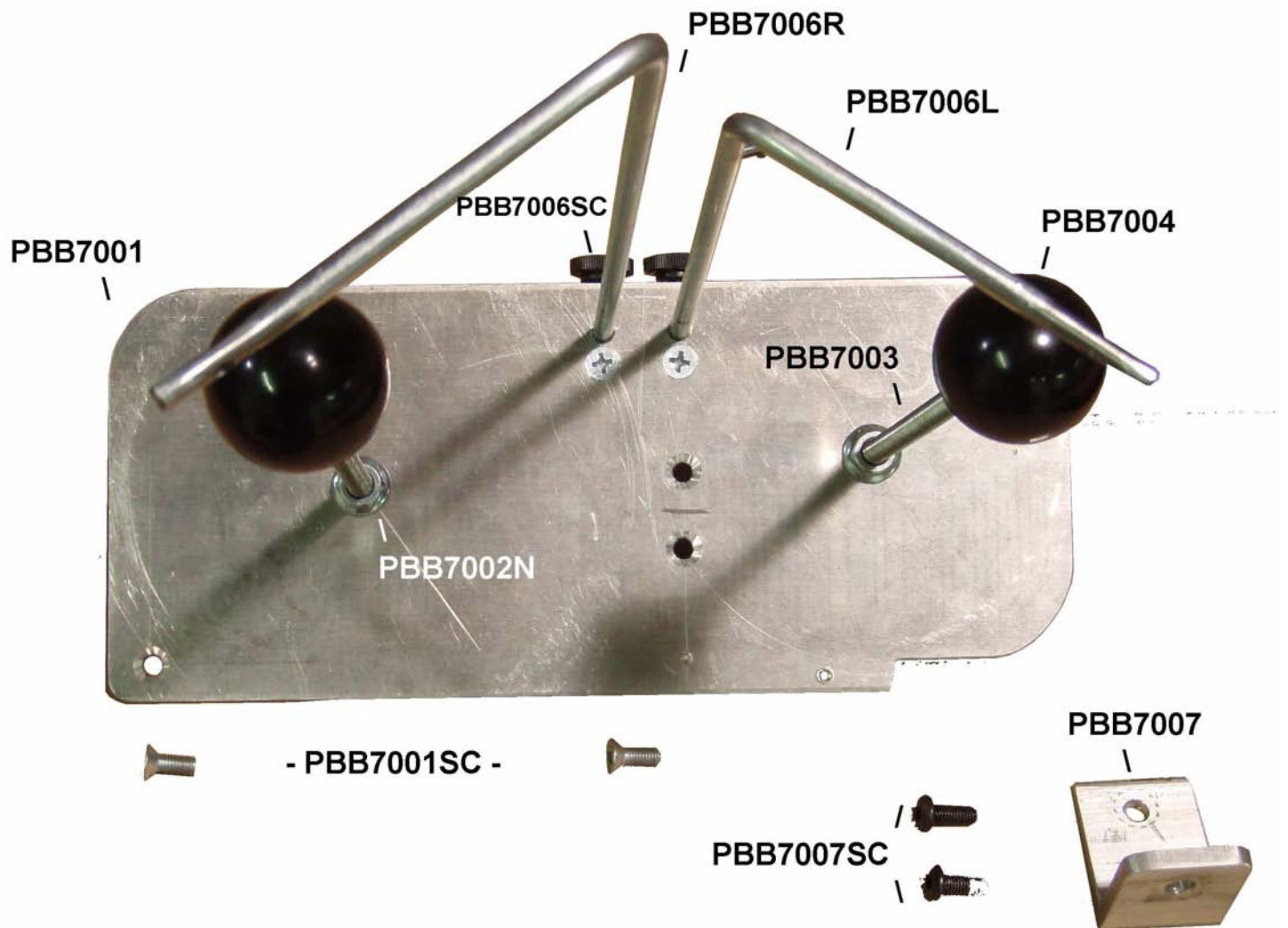
PBB4001	Rear Front Puller Lift Lever
PBB4002SC	Knob Screw
PBB4002SW	Spur Lock Washer
PBB4002K	Knob
PBB4003	Hinge Screw
PBB4003W	Washer
PBB4003N	Lock Nut
PBB4004	Rear Lift Lever Only
PBB4005SC	Hinge Screw
PBB4006SC	Sew Screw
PBB4008	Lifter Block
PBB4007SC	Lifter Block Screw (2)



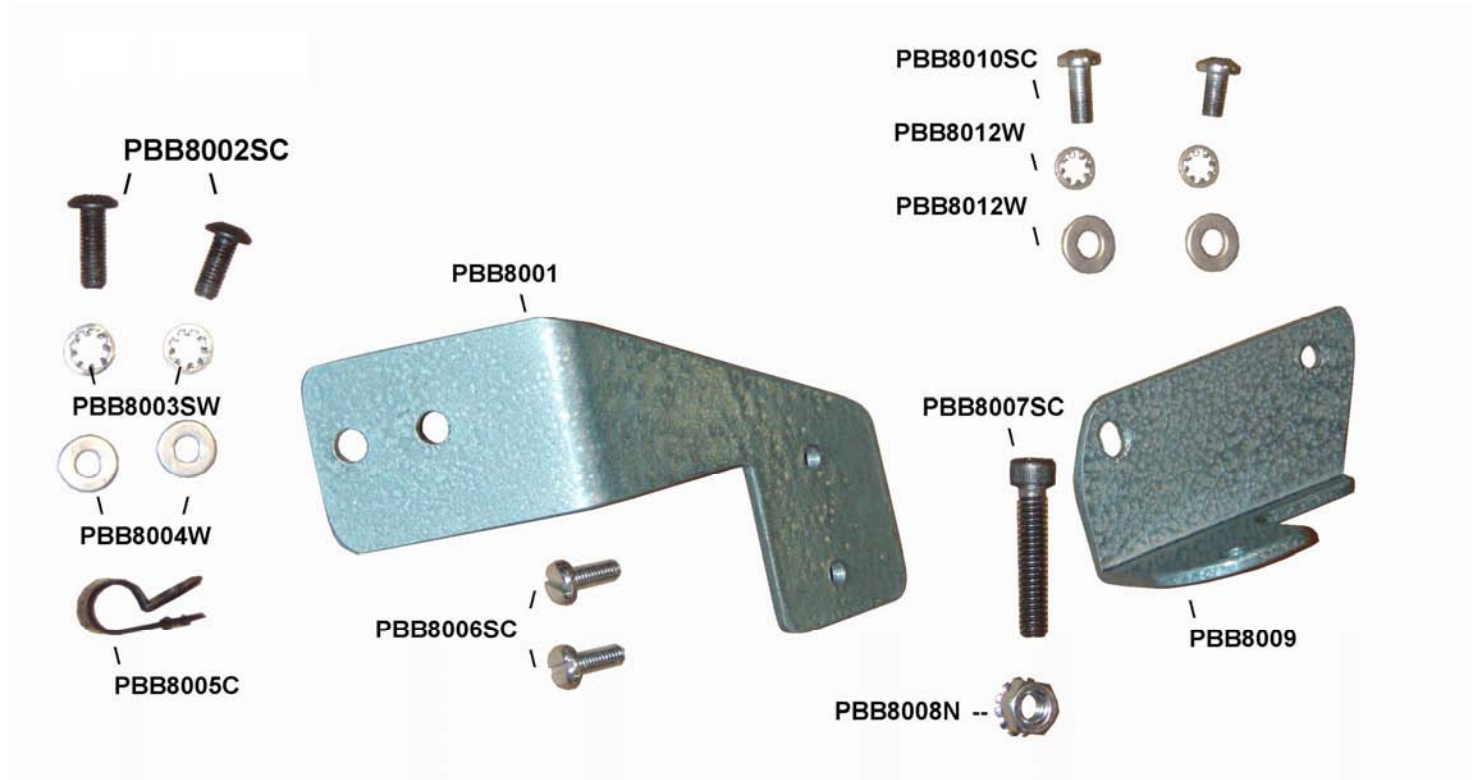
PBB5001	Rear Puller Plate
PBB5002SC	Plate Screw (4)
PBB5003	Feed Roller Yoke
PBB5003B	Bushing
PBB5004SW	Spur Washer (2)
PBB5005SC	Screw (2)



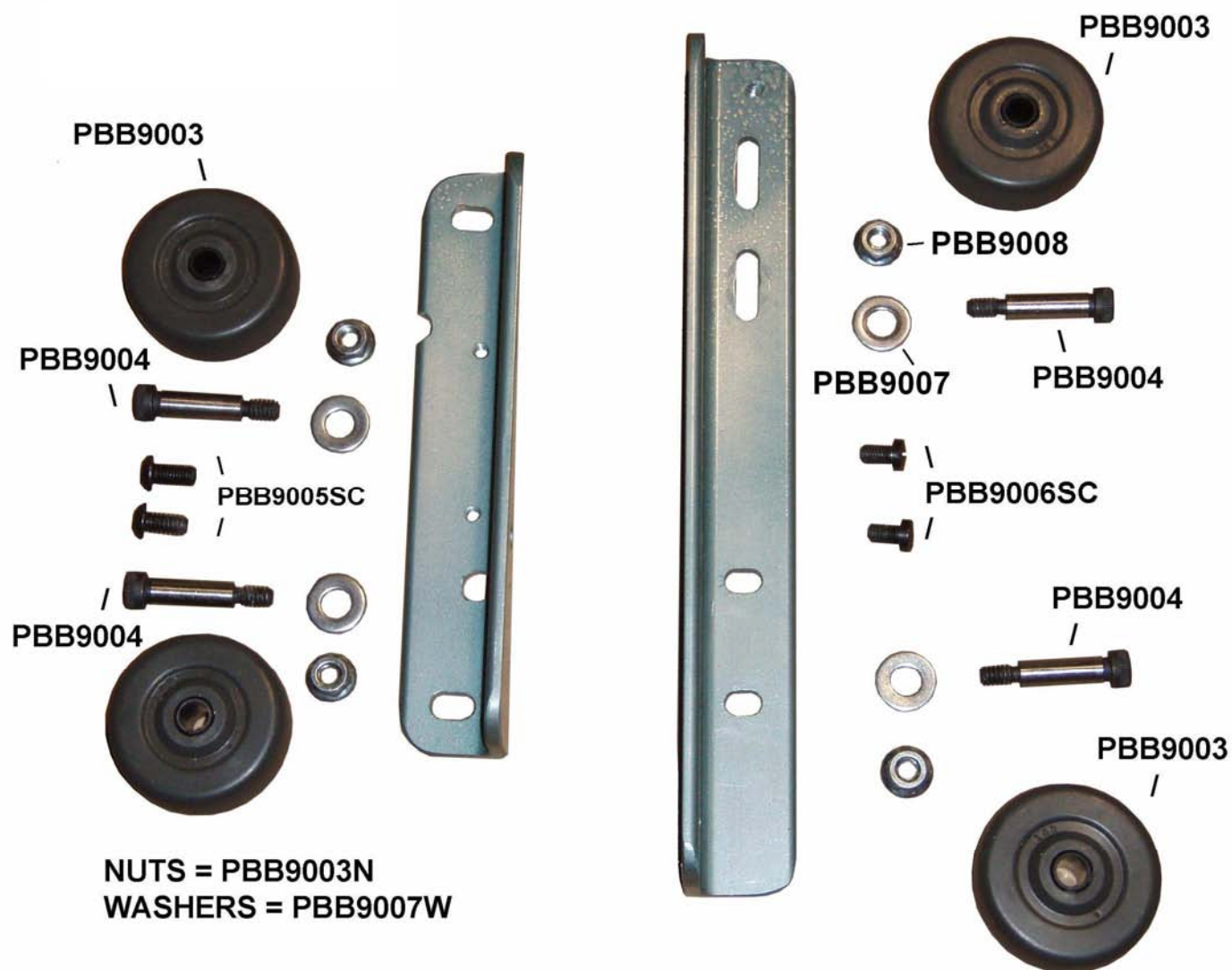
PBB6001	Motor Support Bracket
PBB6002	Motor Support Plate
PBB6003SC	Screw (2)
PBB6004SC	Screw Long (2)
PBB6005SW	Spur Washer (4)
PBB6006N	Lock Nut (2)



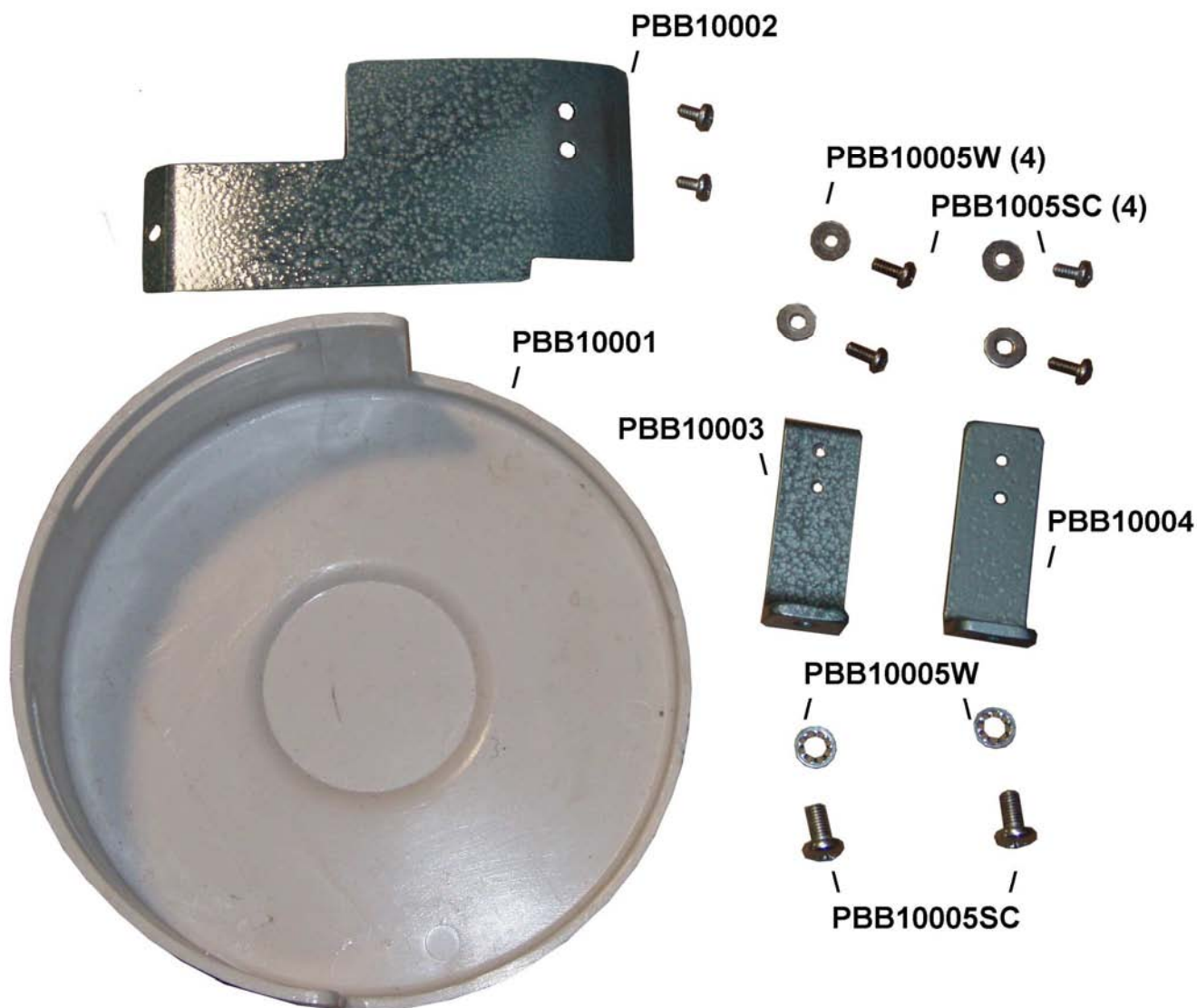
PBB7001	Base Plate
PBB7001SC	Screw (2)
PBB7002N	Lock Nut
PBB7003	Threaded Rod (2)
PBB7004	Thread Spool Hold Down Knob
PBB7005	Thread Guide Rod Left
PBB7006R	Thread Guide Rod Right
PBB7007	Support Bracket
PBB7007SC	Screw (2)



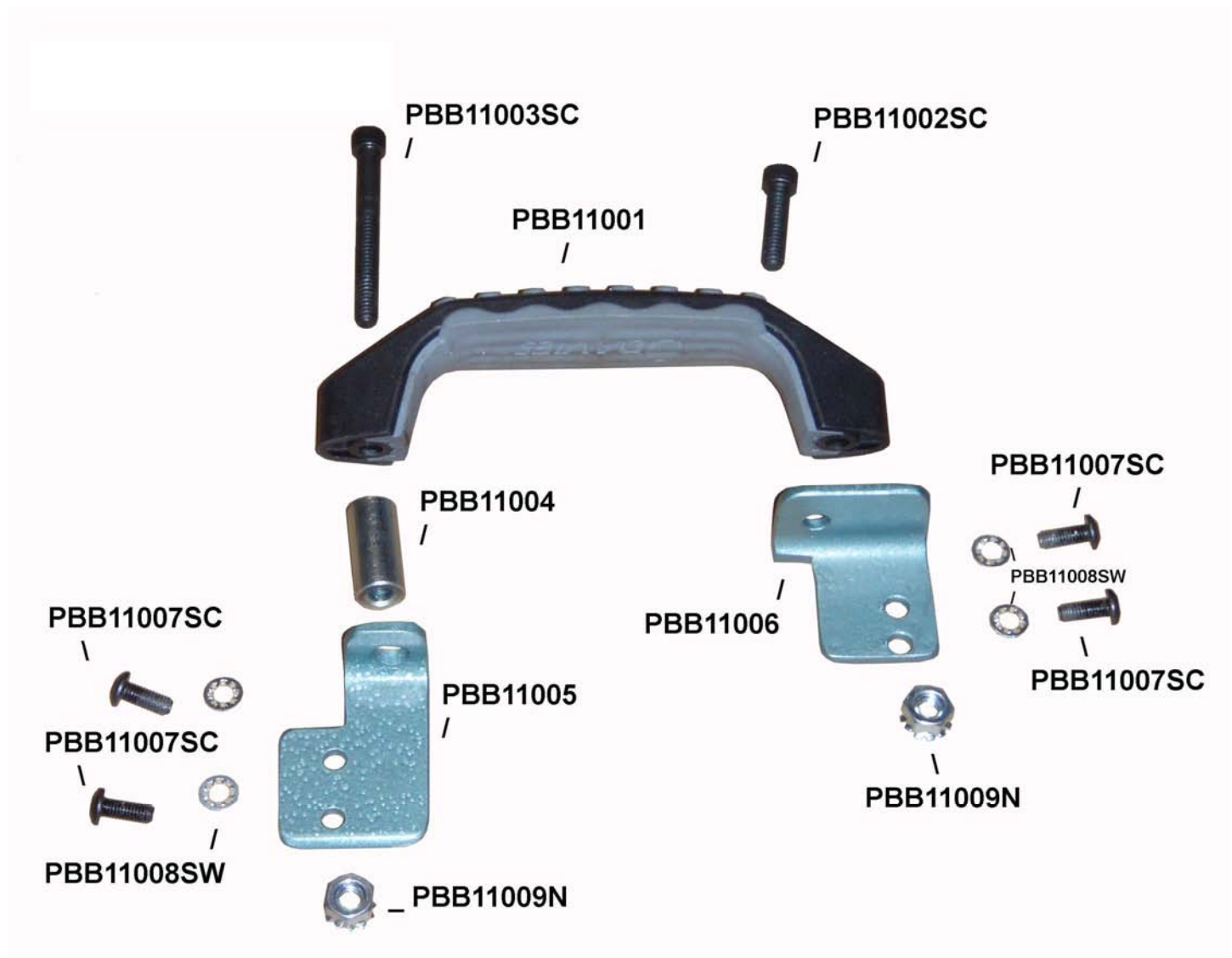
PBB8001	Lower Handle Bracket
PBB8002SC	Screw (2)
PBB8003SW	Spur Washer
PBB8004W	Washer
PBB8005	Cord Clamp
PBB8006SC	Screw (2)
PBB8007SC	Bolt
PBB8008N	Lock Nut
PBB8009	Upper Handle Bracket
PBB8010SC	Screw (2)
PBB8010SW	Spur Washer (2)
PBB8012	Washer (2)



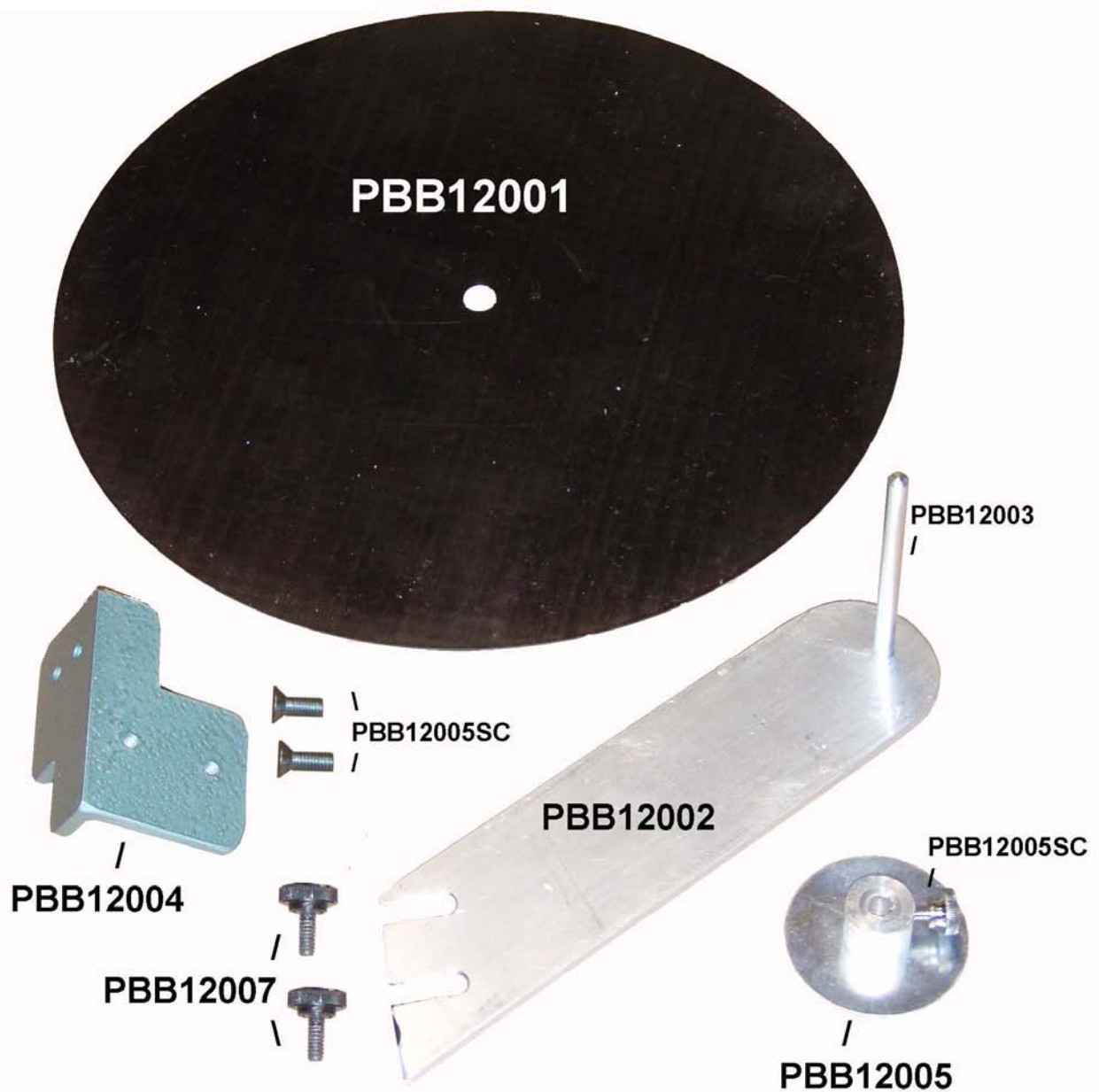
PBB9001	Caster Bracket, Right Side
PBB9002	Caster Bracket, Left Side
PBB9003	Caster (4)
PBB9004	Axel (4)
PBB9005SC	Screw (2)
PBB9006SC	Screw (2)
PBB9006SW	Spur Washer
PBB9007	Washer (4)
PBB9008	Lock Nut (4)



PBB10001	Belt Guard
PBB10002	Belt Guard, Top
PBB10003	Bracket, Upper
PBB10004	Bracket, Lower
PBB10005SC	Screw (7)
PBB10005W	Washer (5)
PBB10006SC	Screw (2)
PBB10006SW	Spur Washer



PBB11001	Handle
PBB11002SC	Bolt
PBB11003SC	Long Bolt
PBB11004	Spacer
PBB11005	Bracket, Right Side
PBB11006	Bracket, Left Side
PBB11007SC	Screw (4)
PBB11008SW	Spur Washer (4)
PBB11009N	Lock Nut



PBB12001	Binding Disk
PBB12002	Binding Bracket
PBB12003	Binding Post
PBB12003N	Nut
PBB12004	Support Bracket
PBB12005SC	Screw (2)
PBB12005N	Lock Nut (2) – not shown
PBB12006SW	Spur Washer (2)
PBB12007	Screw (2)



LOOPER THREAD-
#08078 #69 TEX 70 BONDED NYLON or
#12/4 GLAZED COTTON THREAD



NEEDLE THREAD- STOCK# 08017
#75 CLEAR MONOFILAMENT

Threads to Use:

For Needle Threads:

Stock# 08017 Size 75 Clear Monofilament, 1.5 Lb Canister

For Looper Thread:

Stock# 08078 Size 69 Tex 70 White Bonded Nylon, 1 Lb Spool

Stock# 09011 Size 135 Tan Glazed Cotton Thread, 1 Lb Spool

Size 12/4 Tex 135 Glazed Cotton Thread, 1 Lb Spool

For Heavy Matting:

Stock# 08082 Size 138 Tex White Bonded Nylon, 1 Lb Spool, or

Stock# 08083 Size 138 Tex Black Bonded Nylon, 1 Lb Spool

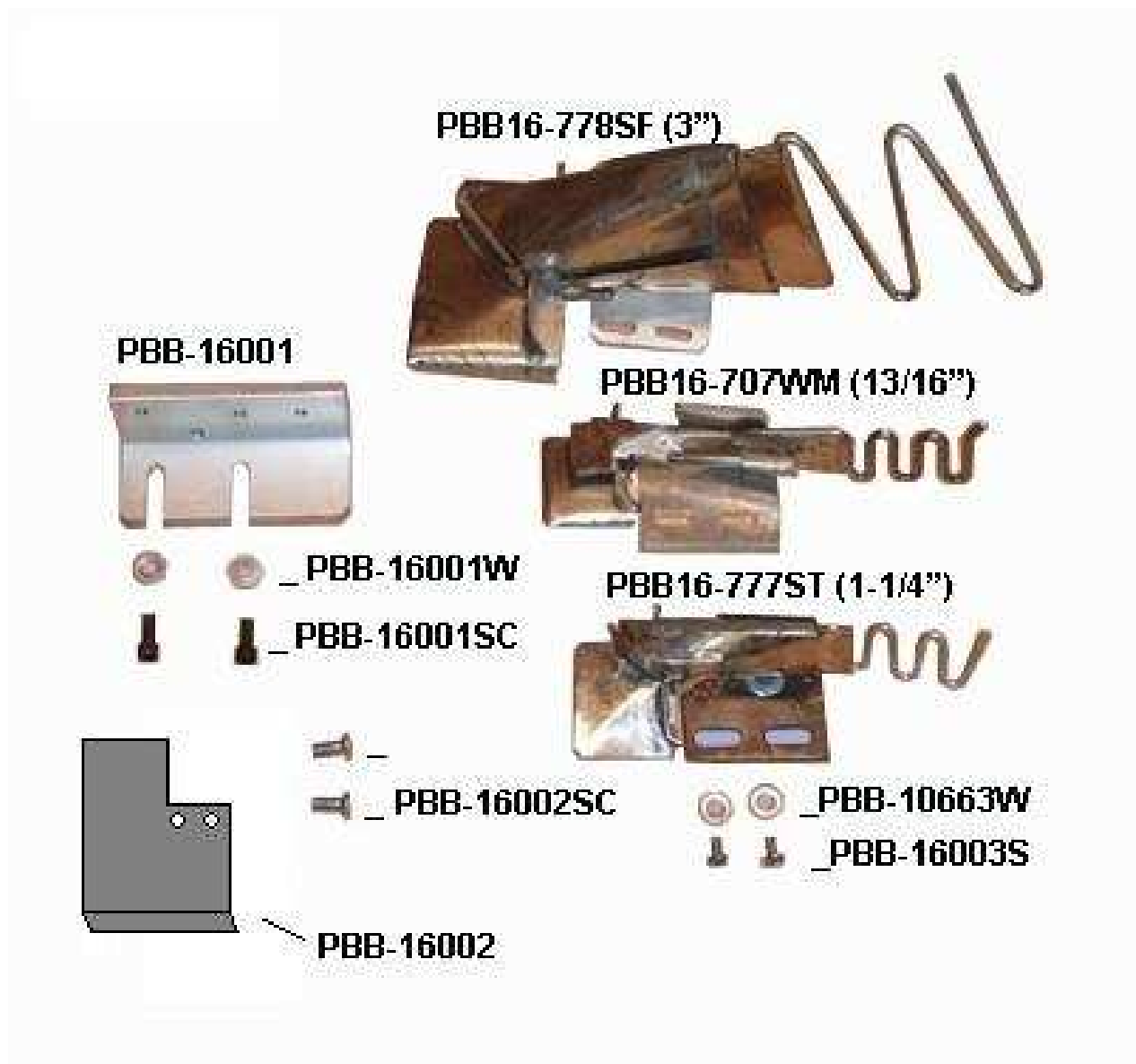


PBB14001	T-Bar Allen Wrench 5/32
PBB14002	T-Bar Allen Wrench 3/32
PBB14003	T-Bar Allen Wrench 7/64
PBB14004	T-Bar Allen Wrench 9/64
PBB14009	T-Bar Allen Wrench 1/8
PBB14005	Needle Wrench
PBB14006	Screw Driver
PBB14007	Needle Height Gauge
PBB14008	Bent Point Tweezers
PBB14011	Parts Instruction Manual
Stock# 21025	UY143GS Needle, 10 / Pack or 100 / Box

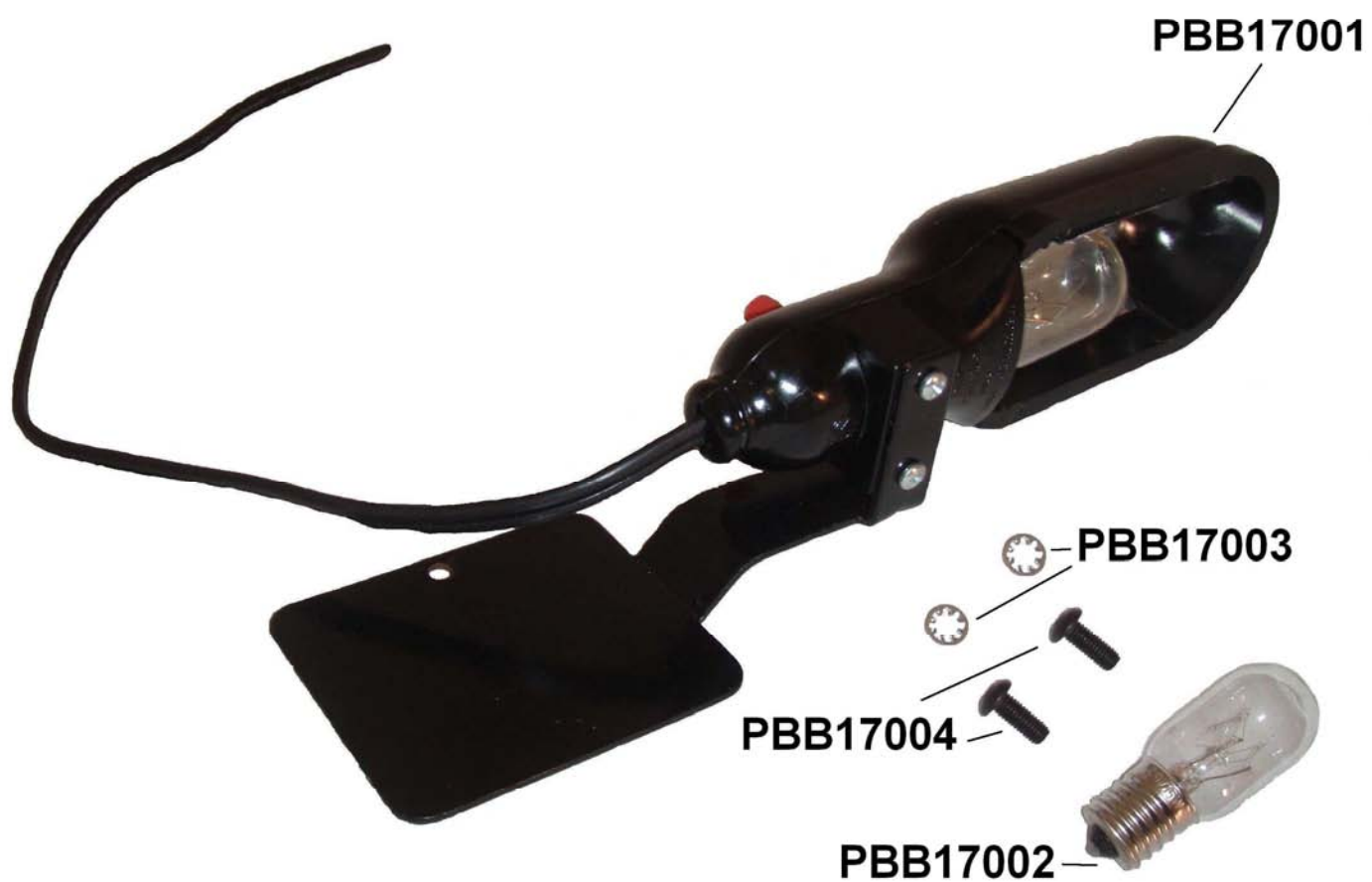


PBB15-707BA (COMPLETE GUIDE)

PBB15-707BA	Complete Cove Base Guide
PBB15001	Angle Bracket
PBB15002SC	Screw (2)
PBB15003	Knob (2)



PBB16001W	Washer (2)
PBB16001SC	Hex Screw (2)
PBB16002	Carpet Glide Plate
PBB16002SC	Screw (2)
PBB16003SC	Screw (2)
PBB16003W	Washer (2)
PBB16-707WM	13/16" Tape Folder Attachment
PBB16-707KP	7/8" Tape Folder Attachment
PBB16-707S	7/8" Serge Tape Folder Attachment
PBB16-777ST	1-1/4" Single Turn Folder Attachment
PBB16-777CT	1-1/4" Clean Top Folder Attachment
PBB16-777STS	1-1/4" Serge Tape Folder Attachment
PBB16-778SF	3" Wide Sisal Cotton Folder Attachment
PBB16-779SF	5" Wide Sisal Cotton Folder Attachment



PBB17001	Light Unit
PBB17002	Light Bulb
PBB17003	Washer (2)
PBB17004	Screw (2)